

Tag & Loading Control Series

Absea®

Introducing our product line of tag and loading control mAbs, and antibody-conjugated magnetic beads

Significance

Tag antibodies are essential tools in scientific research, enabling the precise detection and purification of tagged sequences in expression systems. These antibodies are widely used to monitor the expression and functional analysis of target proteins, making them indispensable for studies in gene expression, protein function, and signal transduction pathways.

Loading control antibodies target proteins that are stably expressed across different tissues and cell types. They serve as reliable reference points to normalize experimental results in techniques such as Western Blot (WB). By correcting variations in sample loading and experimental conditions, loading control antibodies help ensure accurate and reproducible data, offering critical validation for your results.

Strengths

Absea®'s collection of tag and loading control antibodies (IP-beads) are designed for superior specificity and affinity, minimizing background noise for more reliable results. Optimized for applications like WB and IP, they deliver strong performance in detecting low-abundance proteins, even in small sample volumes. With broad cross-species compatibility, they're suited to meet diverse experimental needs.

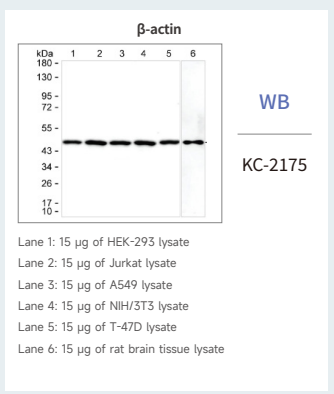
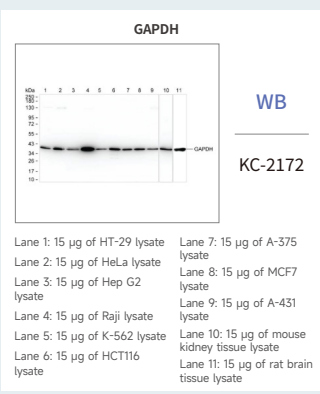
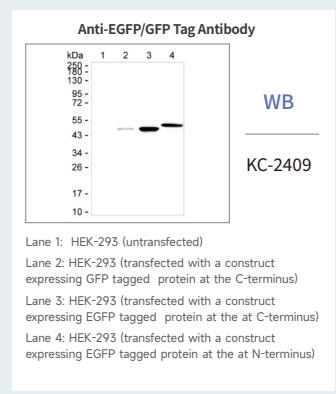
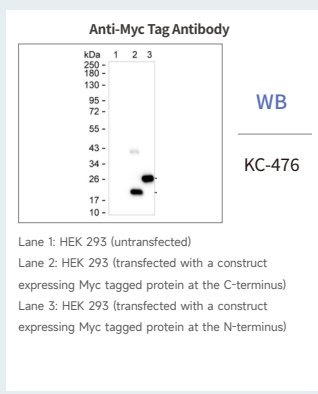
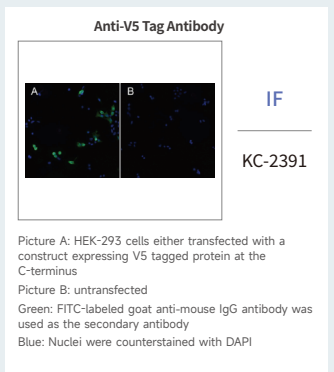
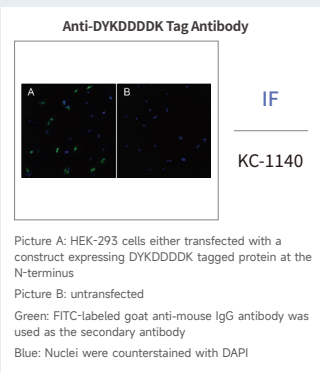
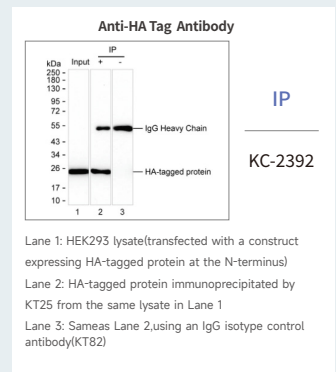
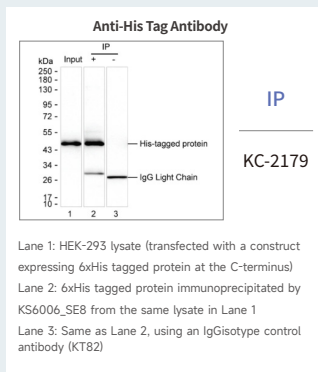
Superior specificity

High affinity

Versatile applications

Enhanced sensitivity

Easy-to-use and automation-friendly (IP-beads)



Tag Monoclonal Antibody

Catalog No.	Targets	Clone No.	WB	WB	IP	IF
KC-1140	DYKDDDDK Tag	K11016_5D8	Anti-DYKDDDDK Tag Antibody	•	•	•
KC-17391	DYKDDDDK Tag	K06189_12C6	Anti-DYKDDDDK Tag Antibody	•		•
KC-13733	DYKDDDDK Tag	K11016_4B11	Anti-DYKDDDDK Tag Antibody	•		•
KC-2409	EGFP/GFP Tag	KAA134_2H3	Anti-EGFP/GFP Tag Antibody	•		•
KC-50519	EGFP/GFP Tag	KAA131_3E11	Anti-EGFP/GFP Tag Antibody			•
KC-2410	EGFP/GFP Tag	KAA134_9C4	Anti-EGFP/GFP Tag Antibody	•	•	
RC-3067	GFP Tag	K01_3M84	Recombinant Anti-GFP Tag Antibody	•		
KC-484	GST Tag	K01004_28F1	Anti-GST Tag Antibody	•	•	
KC-33717	GST Tag	KT4	Anti-GST Tag Antibody	•	•	
KC-22441	GST Tag	K01003_17B11	Anti-GST Tag Antibody	•		
KC-2392	HA Tag	KT25	Anti-HA Tag Antibody	•	•	•
KC-32393	HA Tag	K11016_10H10	Anti-HA Tag Antibody	•	•	•
KC-9033	HA Tag	K11016_10F2	Anti-HA Tag Antibody	•	•	•
KC-2179	His Tag	K56006_5E8	Anti-His Tag Antibody	•	•	•
KH-2178	His Tag	K56006_9D10	Anti-His Tag Antibody (HRP)	•		
KC-2177	MBP Tag	K06169_1A3	Anti-MBP Tag Antibody	•	•	
KC-19265	MBP Tag	K11103_5C10	Anti-MBP Tag Antibody	•		
KC-19264	MBP Tag	K11103_3D1	Anti-MBP Tag Antibody	•		
KC-476	Myc Tag	KAA111_10F11	Anti-Myc Tag Antibody	•	•	•
KC-2180	SUMO Tag	K52037_20C1	Anti-SUMO Tag Antibody	•	•	
KC-13715	SUMO Tag	K52037_7A6	Anti-SUMO Tag Antibody	•	•	
KC-9668	SUMO Tag	K1E028_11E6	Anti-SUMO Tag Antibody		•	
KC-2391	V5 Tag	K05002_3F6	Anti-V5 Tag Antibody	•	•	•

Loading Control Monoclonal Antibody

Catalog No.	Targets	Clone No.	Products	WB	IHC	IP
KC-2175	beta-Actin	KT188	beta-Actin Antibody	•	•	•
KC-959	beta-Actin	K29031_4B7	beta-Actin Antibody	•	•	
KC-2174	beta-Actin	KT185	beta-Actin Antibody	•		
KC-2172	GAPDH	KT186	GAPDH Antibody	•	•	
KC-2173	GAPDH	KT187	GAPDH Antibody	•	•	
KC-2210	GAPDH	K06188_1F7	GAPDH Antibody		•	
KC-3070	beta-Tubulin	K01_3M83	beta-Tubulin Antibody	•		•

Secondary Antibody

Catalog No.	Targets	Products	WB
DH-083	Mouse IgG	Goat Anti-Mouse IgG Antibody (HRP)	•
DH-014	Rabbit IgG	Goat anti-Rabbit IgG (HRP)	•

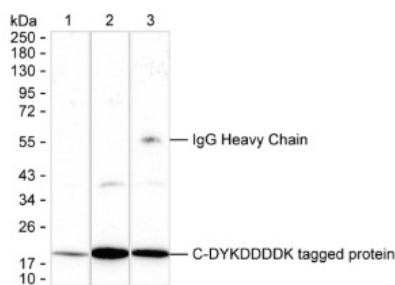
Flagship Products -IP-Beads

Absea® introduces several high-quality direct conjugated magnetic bead products for label antibodies, which can be used for IP and Co-IP experiments. These products have been tested on various application platforms and have proven to be stable and reliable. They can help researchers quickly and efficiently complete IP or Co-IP experiments with bacterial and mammalian cell lysates, as well as tag fusion proteins in in vitro expression systems. They can also serve as an efficient enrichment tool in IP-MS experiments, helping researchers enrich specific proteins (complexes) from complex samples, reducing the threshold for mass spectrometry detection.

Catalog No.	Targets	IP
MB-294	DYKDDDDK Tag	•
MB-301	HA Tag	•
MB-300	Myc Tag	•
MB-332	EGFP/GFP Tag	•

IP validation data

Anti-DYKDDDDK Tag Magnetic Beads



IP- (C-terminus tag) Cat. No.: MB-294

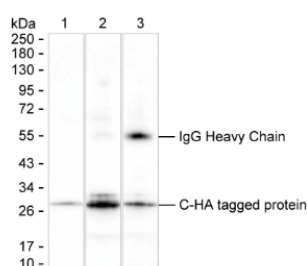
Lane 1: HEK-293 lysate (transfected with DYKDDDDK tagged protein at C-terminus)

Lane 2: DYKDDDDK tagged protein immunoprecipitated by MB-294 from the same lysate as Lane 1

Lane 3: DYKDDDDK tagged protein immunoprecipitated by competitor's magnetic beads from the same lysate as Lane 1

Result: Anti-DYKDDDDK Tag Magnetic Beads (MB-294) can immunoprecipitate DYKDDDDK Tag with a higher efficiency compared with the competitor's product.

Anti-HA Tag Magnetic Beads



IP-(C-terminus tag) Cat. No.: MB-301

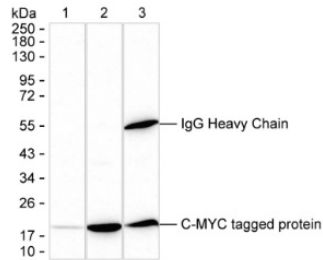
Lane 1: HEK-293 lysate (transfected with HA tagged protein at C-terminus)

Lane 2: HA tagged protein immunoprecipitated by MB-301 from the same lysate as Lane 1

Lane 3: HA tagged protein immunoprecipitated by competitor's magnetic beads from the same lysate as Lane 1

Result: Anti-HA Tag Magnetic Beads (MB-301) can immunoprecipitate HA Tag with a higher efficiency compared with the competitor's product.

Anti-Myc Tag Magnetic Beads



IP (C-terminus tag)

Cat. No.: MB-300

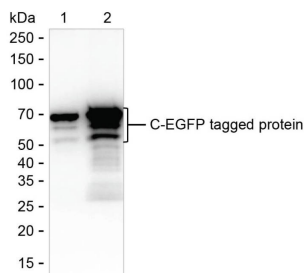
Lane 1: HEK-293 lysate (transfected with HA tagged protein at C-terminus)

Lane 2: HA tagged protein immunoprecipitated by MB-301 from the same lysate as Lane 1

Lane 3: HA tagged protein immunoprecipitated by competitor's magnetic beads from the same lysate as Lane 1

Result: Anti-HA Tag Magnetic Beads (MB-301) can immunoprecipitate HA Tag with a higher efficiency compared with the competitor's product.

Anti-EGFP/GFP Tag Magnetic Beads



IP (C-terminus tag)

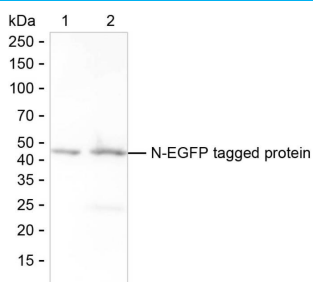
Cat. No.: MB-332

Lane 1: HEK293 lysate transiently expressing C-terminal EGFP-tagged RNF113B (Cat. P65017QBTN)

Lane 2: C-terminal EGFP-tagged RNF113B immunoprecipitated by MB-332 from the same lysate

Result: Anti-EGFP/GFP Tag Magnetic Beads (MB-332) specifically immunoprecipitated C-terminal EGFP-tagged RNF113B.

Anti-EGFP/GFP Tag Magnetic Beads



IP (N-terminus tag)

Cat. No.: MB-332

Lane 1: HEK293 lysate transiently expressing N-terminal EGFP-tagged ARF3 (Cat. P61801QGTN)

Lane 2: N-terminal EGFP-tagged ARF3 immunoprecipitated by MB-332 from the same lysate

Result: Anti-EGFP/GFP Tag Magnetic Beads (MB-332) specifically immunoprecipitate N-terminal EGFP-tagged ARF3.