

NEURODEGENERATIVE DISEASES



Introducing our product line of Neurodegenerative Diseases Markers (proteins and mAbs)

Significance

Neurodegenerative diseases, such as Alzheimer's disease, Parkinson's disease, and Huntington's disease, are chronic progressive disorders caused by the death or dysfunction of neurons in the nervous system. These conditions not only impact patients' quality of life but also place a significant burden on families and society. With technological advancements, effective diagnosis and treatment of neurodegenerative diseases are becoming increasingly feasible. Current research on markers like pTau181, A β 40/42, NEFL, GFAP, SNCA and others is advancing the diagnosis of these diseases.

Features - Antigen

pTau181, pTau217, pTau231:
Single-site phosphorylated
full-length soluble human proteins

Mass Spectrometry Validation:
Precise and
stable phosphorylation sites

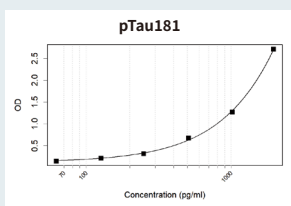
Comprehensive Target Coverage:
Includes cutting-edge targets
such as pTau205 and pTau404

Features - Antibody

Stringent Antigen Screening:
No cross-reactivity

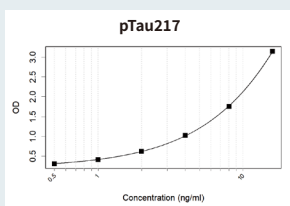
Humanized Antibodies:
Reduced HAMA effect,
lowering background noise

Comprehensive Target Coverage:
Recommended pairs can
detect clinical samples



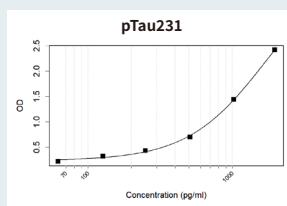
Sandwich ELISA

KC-2341 - KC-116



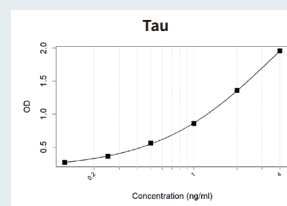
Sandwich ELISA

KC-118 - KC-240



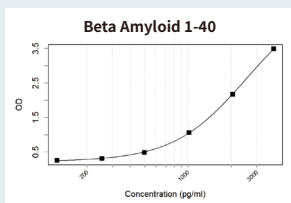
Sandwich ELISA

KC-119 - KC-240



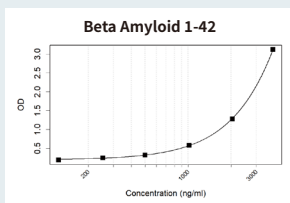
Sandwich ELISA

KC-202 - KC-240



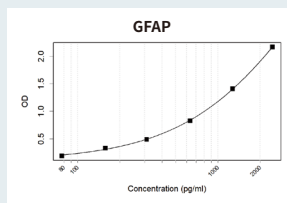
Sandwich ELISA

KC-1732 - KC-108



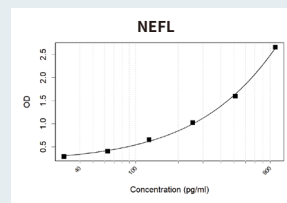
Sandwich ELISA

KC-1732 - KC-630



Sandwich ELISA

KC-1119 - KC-957



Sandwich ELISA

KC-495 - KC-499

Monoclonal Antibodies

Catalog No.	Products	Clone No.	WB	IHC	IP	ELISA	IF	ICC	Epitope mapping
KC-43232	BD-Tau125	K1H043_1E10							√
KC-43058	BD-Tau125	K1H043_14D4							√
KC-43242	BD-Tau125	K1H043_2E2							√
KC-51537	BD-Tau125	K1H043_8F9							√
KC-44224	MTBR-Tau243	K94104_7H10							√
KC-45856	MTBR-Tau243	K94104_13C3							√
KC-46325	MTBR-Tau243	K94104_16B7							√
KC-44222	MTBR-Tau243	K94104_4C4							√
KC-44255	MTBR-Tau243	K94104_16B4							√
KC-44223	MTBR-Tau243	K94104_7C9							√
KC-44227	MTBR-Tau243	K94104_14C6							√
KC-44226	MTBR-Tau243	K94104_10D2							√
RC-3059	Tau	K01_2J08	√						
KC-11590	Tau	K70007_15H12							√
KC-16719	Tau	K06300_10G5							√
RH-020	Tau	KT233				√			
KC-43062	Tau (L125)	K1H043_8D4							√
KC-12460	Tau (S198)	K94026_13D10							√
KC-12444	Tau (S198)	K94026_7E1							√
KC-12443	Tau (S198)	K94026_7C12							√
KC-44416	Tau (S214)	K40118_15A10							√
KC-44298	Tau (S214)	K40118_11A11							√
KC-41884	Tau (S262)	KBL013_8C2			√				√
KC-41792	Tau (S262)	KBL013_12H2			√				√
KC-43163	Tau (S262)	KBL013_6D12			√				√
KC-43235	Tau (S293)	K1E097_3D7			√				√
KC-51535	Tau (S293)	K1E097_13E4							√
KC-51534	Tau (S293)	K1E097_5B3							√
KC-202	Tau (S305)	KT232	√		√	√			√
KC-116	Tau (S305)	KT233	√	√		√	√		√
KC-42927	Tau (S305)	KBL016_4D9			√				√
KC-16701	Tau (S305)	K06300_2A6							√
KC-16706	Tau (S305)	K06300_14A11							√
KB-116	Tau (S305)	KT233				√			
KC-37239	Tau (S324)	KBL012_20B6							√
KC-36604	Tau (S324)	KBL012_2E9							√
KC-41638	Tau (S324)	KBL013_10C10							√
KC-42881	Tau (S356)	K40113_11C8	√						√
KC-36464	Tau (S356)	KBL012_20H8	√						√
KC-42753	Tau (S356)	K40113_1D11							√
RC-4594	Tau (S396)	K01_2J09	√						√
KC-12422	Tau (S396)	K94026_1B12							√
KC-42949	Tau (S412)	KBL016_18F1							√
KC-43202	Tau (S412)	KBL016_4F11							√

Catalog No.	Products	Clone No.	WB	IHC	IP	ELISA	IF	ICC	Epitope mapping
KC-43158	Tau (S412)	KBL016_3D7							√
KC-240	Tau (S422)	KT234	√	√		√			√
KC-16714	Tau (S422)	K06300_12H3							√
KC-42123	Tau (S422)	K56076_4G6							√
KC-16704	Tau (S435)	K06300_11B12							√
KC-44527	Tau (S46)	KCA029_1D5							√
KC-44806	Tau (S46)	KCA029_5D8							√
KC-45218	Tau (S46)	KCA029_20E3							√
KC-44486	Tau (T153)	K9N065_19G2							√
KC-44378	Tau (T153)	K9N065_7F4							√
KC-47300	Tau (T169)	KCA033_11D8	√						√
KC-47211	Tau (T169)	KCA033_13C5							√
KC-47198	Tau (T169)	KCA033_14A8							√
KC-8750	Tau (T17)	K06300_6A6			√				√
KC-13364	Tau (T17)	K06300_13F11							√
KC-46249	Tau (T17)	K8U071_16B3							√
KC-45426	Tau (T17)	K8U071_7H4							√
KC-45552	Tau (T17)	K8U071_7F6							√
KC-45603	Tau (T17)	K8U071_6A10							√
KC-12417	Tau (T181)	K94025_13C8							√
KC-29925	Tau (T205)	K40094_9B1							√
KC-29222	Tau (T205)	K40094_19G5							√
KC-29194	Tau (T205)	K40094_10A9							√
KC-44387	Tau (T212)	K9N065_4D3							√
KC-12415	Tau (T217)	K94025_7B10							√
KC-29133	Tau (T217)	K40094_19F2							√
KC-29947	Tau (T217)	K40094_15B2							√
KC-45009	Tau (T220)	KCA032_4A3							√
KC-16709	Tau (T220)	K06300_16H8							√
KC-14134	Tau (T231 specific)	K94026_3D6							√
KC-14138	Tau (T231 specific)	K94026_14G5							√
KC-14139	Tau (T231)	K94026_15B3							√
KC-16699	Tau (T231)	K29014_1D2							√
KC-12451	Tau (T231)	K94026_11A5							√
KC-41715	Tau (T377)	K8U063_14C5			√				√
KC-41946	Tau (T377)	K8U063_11G10			√				√
KC-16712	Tau (T377)	K06300_10A1							√
KC-44924	Tau (T403)	K56082_16E11							√
KC-41968	Tau (T50)	K29117_1F3							√
KC-8756	pTau	K06300_15H1							√
KC-45737	pTau153	K9N065_2F6							√
KC-43697	pTau175	K8U071_12B10							√
KC-1516	pTau181	K40031_6E3		√					
KC-117	pTau181	KT229				√			
KC-1661	pTau181	K40031_2A11		√			√		
KC-1515	pTau181	K40031_7B12		√			√		

Catalog No.	Products	Clone No.	WB	IHC	IP	ELISA	IF	ICC	Epitope mapping
RC-4121	pTau181	K01_1M17	√						
KC-2341	pTau181	K40031_11H5				√			√
KC-43663	pTau181	K8U071_9E5							√
KC-1513	pTau181	K40031_12F6				√			
RC-035	pTau181	K40031_11H5							
KC-44128	pTau181	K8U071_20E3							√
KC-43732	pTau181	K8U071_1H8							√
KC-44658	pTau195	K56082_8C9							√
KC-44884	pTau195	K56082_17D9							√
KC-45032	pTau195	K56082_11E8							√
RC-4028	pTau198	K01_1L90	√						√
RC-4047	pTau199	K01_1L46	√						√
RC-16647	pTau199	K01_4Q71	√						
KC-44559	pTau199	K40118_9C1							√
KC-44286	pTau199	K40118_2E3							√
KC-45244	pTau199	K40118_14E2							√
KC-44312	pTau199	K40118_1B11							√
RC-5399	pTau202	K01_2J05	√						√
RC-16650	pTau202	K01_4Q74	√						
KC-44277	pTau202	K94104_7E8							√
KC-45209	pTau202/205	K1H048_1D2							√
KC-44754	pTau202/205	K1H048_10E3							√
KC-45205	pTau202/205	K1H048_9G6							√
KC-45115	pTau202/205	K1H048_9B5							√
KC-44814	pTau202/205	K1H048_5F10							√
KC-45140	pTau202/205	K1H048_15F4							√
KC-45125	pTau202/205	K1H048_13C6							√
KC-45255	pTau202/205	K1H048_6G9							√
RC-4090	pTau202/pTau205	K01_1L99	√						
RC-4052	pTau205	K01_1M01	√						√
KC-8432	pTau205	K9N039_11G9				√			
KC-8464	pTau205	K9N039_17D9				√			
KC-8463	pTau205	K9N039_20E6				√			√
KC-29769	pTau205	K9N039_3C12							√
KC-29679	pTau205	K9N039_9C9							√
KC-29777	pTau205	K9N039_6A3							√
KC-29882	pTau205	K9N039_10A9							√
RC-16649	pTau214	K01_4Q73	√						
KC-489	pTau217	KAA338_5F12		√					
KC-490	pTau217	KAA338_17B5		√					
KC-118	pTau217	KT225				√			
KC-512	pTau217	KAA338_14F7				√			
KC-1375	pTau217	KT230				√			
RC-023	pTau217	K16227_13E6				√			
KC-10393	pTau231	K40031_9H4							√
KC-10388	pTau231	K40031_5H4							√

Catalog No.	Products	Clone No.	WB	IHC	IP	ELISA	IF	ICC	Epitope mapping
KC-119	pTau231	KT231				√			
KC-44542	pTau231	K1E103_11B11	√						√
KC-46084	pTau231	K1E103_1C12	√						√
KC-44823	pTau231	K1E103_12A8	√						
KC-44759	pTau231	K1E103_8A5							√
KC-44758	pTau231	K1E103_2H1							√
RC-4781	pTau235	K01_2J06	√						
KC-44811	pTau235	K92111_7F4							√
KC-45274	pTau235	K92111_8C5							√
KC-42318	pTau285	K92107_1E11							√
KC-42418	pTau285	K92107_6C10							√
KC-42443	pTau285	K92107_4G8							√
KC-42489	pTau285	K92107_8F4							√
RC-16373	pTau324	K01_4M93	√						
RC-16830	pTau396	K01_4S57	√	√					
KC-12423	pTau396	K94026_1C4							√
KC-12450	pTau396	K94026_10F3							√
KC-12463	pTau396	K94026_14D8							√
KC-12442	pTau396	K94026_7C7							√
KC-12456	pTau396	K94026_11E1							√
KC-8753	pTau400	K06300_12B10							√
KC-11582	pTau400	K70007_6C10							√
KC-11589	pTau400	K70007_13B10							√
RC-4157	pTau404	K01_1M04	√						√
RC-16648	pTau404	K01_4Q72	√						
KC-11581	pTau404	K70007_6A7							√
KC-44843	pTau409	KCA029_17D12							√
KC-45293	pTau409	KCA029_2G5							√
KC-44991	pTau409	KCA029_6C9							√
KC-44621	pTau409	KCA029_10D6							√
KC-42946	pTau412	KBL016_6E1							√
KC-43717	pTau412	KBL016_12H7							√
KC-41885	pTau414	K8U063_7C7							√
KC-42856	pTau422	K56076_8D1							√
KC-44654	pTau46	KCA029_7D2							√
KC-44865	pTau46	KCA029_12C10							√
RC-5238	pTau50	K01_2J07	√					√	
RC-4182	Beta Amyloid	K01_1L10	√	√	√			√	
RC-6525	Beta Amyloid	K01_2W67	√		√				
RC-4064	Beta Amyloid	K01_1M07	√	√				√	
KC-1732	Beta Amyloid	K70013_6H1				√			
KH-1732	Beta Amyloid	K70013_6H1				√			
RC-022	Beta Amyloid	K70013_6H1				√			
RC-5556	Beta Amyloid	K01_2K78	√					√	
KC-110	Beta Amyloid 1-40	K70013_5A2				√			
KC-108	Beta Amyloid 1-40	K70013_8C12				√			

Catalog No.	Products	Clone No.	WB	IHC	IP	ELISA	IF	ICC	Epitope mapping
KC-109	Beta Amyloid 1-40	K70013_5G5				√			
KC-234	Beta Amyloid 1-42	K92011_3F10				√			
KC-526	Beta Amyloid 1-42	K92011_16F4				√			
KC-523	Beta Amyloid 1-42	K92011_10A4		√					
KC-106	Beta Amyloid 1-42	K70014_13C11				√			
KC-630	Beta Amyloid 1-42	K92011_13F10				√			
RC-030	Beta Amyloid 1-42	K92011_13F10				√			
KC-093	PGP9.5	K49007_1G1	√	√	√	√			
KC-473	PGP9.5	K52010_3D12	√	√	√				
KC-096	PGP9.5	K52010_8F2	√		√				
KC-097	PGP9.5	K52010_11G12	√		√				
KC-090	PGP9.5	K52010_15B9	√		√				
KC-474	PGP9.5	K52010_13B4	√	√	√				
KC-089	PGP9.5	K52010_6E12	√	√	√				
KC-092	PGP9.5	K49007_4E11	√	√	√				
KC-472	PGP9.5	K52010_14C5	√	√		√			
KC-091	PGP9.5	K49007_7G8	√	√					
KC-095	PGP9.5	K49007_14B1	√	√		√			
KC-6297	PGP9.5	K01_2T31	√					√	
RC-4685	PGP9.5	K01_1W68	√						
OC-135	PGP9.5			√					
KC-6133	PGP9.5	K01_2R64	√					√	
KC-10627	NEFL	K49012_1B12	√	√					
KC-487	NEFL	K49012_1E6	√	√					
KC-495	NEFL	K49012_6C10	√	√		√			
KC-1017	NEFL	K49012_1C8	√	√			√		
KC-499	NEFL	K49012_4D10	√	√		√	√		
KC-1015	NEFL	K49012_7A10	√	√					
KC-1016	NEFL	K49012_8E4		√					
KC-683	NEFL	K49012_8F4		√		√			
RC-4109	alpha Synuclein	K01_1M67	√	√					
RC-15356	alpha Synuclein	K01_3R66	√	√					
KC-113	alpha Synuclein	KT223		√		√	√		
KC-114	alpha Synuclein	KT224		√		√			
KC-491	alpha Synuclein	KAA334_11F10		√					
KC-1487	alpha Synuclein	KAA334_5G2		√		√			
KC-1488	alpha Synuclein	KAA354_3G6		√		√			
RC-16966	alpha Synuclein	K01_4T94	√						
RC-16340	alpha Synuclein	K01_4M60	√						
KC-493	IL17A	KAA340_4B1	√						
KC-1841	IL17A	K1E007_7H5	√			√			
KC-3000	IL17A	K1E007_1C3	√			√			
KC-2993	IL17A	K1E007_7E4				√			
KC-3009	IL17A	K1E007_1A9				√			
KC-9549	IL17A	K1E007_2B5				√			
KC-9561	IL17A	K1E007_10F3				√			

Catalog No.	Products	Clone No.	WB	IHC	IP	ELISA	IF	ICC	Epitope mapping
KC-1870	VCP	K49025_6D3	√	√					
KC-1869	VCP	K49025_13B11	√	√			√		
KC-1868	VCP	K49025_14G8	√	√					
RC-5472	VCP	K01_2J92	√	√				√	
KC-2509	VCP	K94041_6C1		√					
RC-5340	TARDBP	K01_2J16	√	√				√	
KC-1730	TDP-25/TDP-	K1E027_15A2	√	√	√				
KC-1294	TDP-25/TDP-	K1E027_8F6	√	√	√				
KC-1729	TDP-25/TDP-	K1E027_8B12	√		√				
KC-8424	TDP-25/TDP-	K16312_1B2				√			
KC-8426	TDP-25/TDP-	K16312_17E3				√			
KC-8427	TDP-25/TDP-	K16312_2E7				√			
KC-8429	TDP-25/TDP-	K16312_14A12				√			
KC-8431	TDP-25/TDP-	K16312_19F11				√			
KC-8433	TDP-25/TDP-	K1E027_4D11				√			
KC-8435	TDP-25/TDP-	K16312_10D1				√			
KC-8425	TDP-35/TDP-43	K16312_10G6				√			
KC-8428	TDP-35/TDP-43	K16312_17G5				√			
KC-8430	TDP-35/TDP-43	K16312_11H8				√			
KC-1093	TDP-43	K1E021_9C8		√			√		
KC-8434	TDP-43	K16312_12C4				√			
RN-008	TDP-43	K49031_1E1				√			
KC-1219	APOE	K70037_6B9	√	√					
RC-16824	APOE	K01_4S51	√	√					
KC-1220	APOE	K70037_14F5		√					
KC-1218	APOE	K70037_5B6		√					
KC-30350	APOE4	K1E083_2H11							
KC-30329	APOE4	K1E083_4B5							
RC-15357	LRRK2	K01_3R67	√	√					
KC-8365	LRRK2	K92036_5H10				√			
KC-8366	LRRK2	K92036_10F1				√			
KC-8332	LRRK2	K92036_14B8				√			
RC-16616	LRRK2 (phospho	K01_4Q40	√						
KC-1296	PARK7	K94023_15B1	√		√	√			
RC-4399	PARK7	K01_1L35	√	√				√	
KC-1467	PARK7	K94023_19D9		√					
KC-1734	PARK7	K92021_12F10		√					
KC-799	PARK7	K92021_12H3		√		√			
KC-1476	PARK7	K92021_12D8				√			
KC-1478	PARK7	K92021_20F2				√			
RC-5156	Neurofilament Heavy	K01_1U70	√	√			√		
KC-1376	Neurofilament Heavy	K29024_8G12	√						
KC-1190	Neurofilament Heavy	K29024_7A3		√		√	√		
KC-1590	Neurofilament Heavy	K29024_3H11				√			
KC-2919	Neurofilament Heavy	K29024_7B7				√			
KC-1588	Neurofilament Heavy	K29024_9D9				√			

Catalog No.	Products	Clone No.	WB	IHC	IP	ELISA	IF	ICC	Epitope mapping
KC-2635	ANXA11	K06358_19A10			√	√			
KC-16476	ANXA11	K06358_11A7		√					
KC-16470	ANXA11	K06358_4D8		√					
KC-2505	ANXA11	K06358_13H5		√					
KC-7518	ANXA11	K06358_10C8				√			
KC-7520	ANXA11	K06358_13G11				√			
KC-7516	ANXA11	K06358_18F7				√			
KC-7517	ANXA11	K06358_6F5				√			
KC-46674	L1CAM	KAA142_6B9	√	√	√				
KC-1805	L1CAM	KAA387_2E6	√	√			√		
OC-109	L1CAM				√				
OC-125	L1CAM			√					
KC-1806	L1CAM	KAA387_7D12		√		√			
KC-1804	L1CAM	KAA387_2A11		√					
KC-1963	Drebrin	K56020_20H12	√	√	√	√			
KC-2108	Drebrin	K56020_18H8		√	√	√			
KC-2107	Drebrin	K56020_5G3		√	√				
KC-2290	Drebrin	K56020_2A5		√		√			
KC-7940	Drebrin	K56020_6A2				√			
KC-7943	Drebrin	K56020_3G10				√			
KC-8324	IL31	K94022_19D5	√						
KC-3933	IL31	K94022_4B2	√						
KC-8321	IL31	K24017_4H3				√			
KC-8322	IL31	K94022_2C12				√			
KC-8323	IL31	K94022_16C3				√			
RC-16811	DKK1	K01_4S38	√	√					
KC-28130	DKK1	K94069_20G2	√						
KC-28126	DKK1	K94069_16D4	√						
KC-28125	DKK1	K94069_15A10	√						
KC-2424	DKK1	KAA130_4A7		√					
KC-2422	DKK1	KAA130_7A9		√					
KC-604	VAMP1	K40030_15D9	√	√					
KC-605	VAMP1	K40030_3B4	√	√					
KC-1781	VAMP1	K40030_15G9	√						
OC-120	VAMP1			√					
KC-10380	VAMP1	K40030_9F10				√			
KC-10382	VAMP1	K40030_11B12				√			
KC-1350	ERBB4	K06329_1G12		√					
RC-5704	ERBB4	K01_2M31	√						
RC-15334	ERBB4	K01_3R44	√				√		
KC-2501	ERBB4	K16284_4A3		√		√			
KC-7619	ERBB4	K06329_14C3				√			
KC-8176	ERBB4	K16284_1C6				√			
RC-5567	ERBB4 (phospho	K01_2K89	√	√					
KC-3095	DCTN1	K01_3M85	√						
KC-38215	DCTN1	K1E093_16B4	√						

Catalog No.	Products	Clone No.	WB	IHC	IP	ELISA	IF	ICC	Epitope mapping
KC-40476	DCTN1	K1E093_1C6	√						
RC-6392	NMDAR1	K01_2U31	√						
RC-16926	NMDAR1	K01_4T54	√						
KC-571	CD10	KAA335_5H6		√					
KC-572	CD10	KAA335_8D3		√					
KC-570	CD10	KAA335_2C4		√					
KC-28649	CD10	K92076_7C5	√						
KC-4323	CD10	K01_1J18		√			√		
RC-5970	VPS35	K01_2P99	√	√					
KC-3050	alpha 1 Sodium	K02_1J01	√	√					
RC-16805	alpha 1 Sodium	K01_4S32	√	√					
RC-5870	DNA Polymerase	K01_2N98	√						
RC-16737	DNA Polymerase	K01_4R63	√						
RC-16030	Niemann Pick C1	K01_4J47	√						
RC-3041	PSEN2	K01_1K52	√	√					
RC-4180	PSEN2 (phospho	K01_1L72	√						
RC-3047	Presenilin-1	K01_3L61	√					√	
RC-15142	Presenilin-1	K01_3P50	√						
RC-6954	Presenilin-1	K01_3L08	√						
KC-2029	ATXN1	K40053_18G2	√			√			
RC-4461	ATXN1	K01_1N15	√						
KC-2497	ATXN1	K40053_8F1		√		√			
RC-6895	IP3 Receptor	K01_3K48	√	√					
KC-36738	IP3 Receptor	K8U059_12B6	√	√					
KC-37315	IP3 Receptor	K8U059_13A7	√	√					
KC-36659	IP3 Receptor	K8U059_15C4	√						
KC-41512	KIF1C	K9N055_15B12	√						
KC-36870	KIF1C	K9N055_5G2	√						
OC-600	UNC5C		√						
KC-34670	COQ7	K94089_13D2		√					
OC-2363	COQ7		√						
KC-8401	Matrin-3	K92081_13E4	√	√	√				
KC-28856	Matrin-3	K92081_2A9	√						
KC-29592	Matrin-3	K92081_16A7	√						
KC-28899	Matrin-3	K92081_18B1		√	√				
KC-28989	Matrin-3	K92081_16B3			√				
KC-31081	SEPSECS	K9N044_9H12	√						
KC-31072	SEPSECS	K9N044_29A12		√					
RN-14756	SEPSECS	K9N044_1A6							
RN-14754	SEPSECS	K9N044_28C1							
RN-14755	SEPSECS	K9N044_9H12							
KC-28163	CHMP2B	K9N034_17D9	√						
RC-16260	CHMP2B	K01_4L79	√						
KC-15727	VRK1	K1E045_11A8		√					
KC-2593	VRK1	K1E045_18E9		√					
KC-15726	VRK1	K1E045_16A12		√					

Catalog No.	Products	Clone No.	WB	IHC	IP	ELISA	IF	ICC	Epitope mapping
OC-289	VRK1			√					
KC-33336	K48 peptide/K63	K40105_16E2	√						
KC-4272	Ubiquitin	K01_1K11	√	√					
RC-5458	Ubiquitin	K01_2J78	√	√					
KC-4416	Ubiquitin	K01_1K10	√	√					
RC-5125	Ubiquitin (linkage-	K01_1T16	√	√					
RC-5966	Ubiquitin (linkage-	K01_2P95	√	√				√	
RC-16803	Ubiquitin K63	K01_4S30	√	√					
KC-2964	CNPase	K24040_16D9		√					
KC-3177	CNPase	K24040_12C10			√				
KC-18098	CNPase	K24040_9F11		√					
OC-435	CNPase			√					
RC-7047	NAK/TBK1	K01_3M05	√	√			√		
RC-6957	NAK/TBK1	K01_3L11	√						
RC-6949	NAK/TBK1	K01_3L03	√						
RC-16634	NAK/TBK1 (phospho	K01_4Q58	√						
KC-1930	Ferritin Light Chain	K40008_4B5	√		√				
OC-026	Ferritin Light Chain		√						
KC-10191	Ferritin Light Chain	K40008_3B6		√					
RC-5932	SOD1	K01_2P61	√	√				√	
RC-5122	SOD1	K01_1Y90	√	√					
RC-5931	SOD1	K01_2P60	√	√				√	
KC-1751	SOD1	K70049_2D5		√					
KC-1795	SOD1	K70049_6D1		√					
RC-3075	Tyrosine Hydroxylase	K01_2J73	√	√					
RC-15448	Tyrosine Hydroxylase	K01_3S59	√	√					
RC-17001	Tyrosine Hydroxylase	K01_4U30	√	√			√		
OC-678	LMNB1		√	√					
KC-8379	LMNB1	KAA200_15D1			√				
KC-3826	LMNB1	KAA200_2F7		√	√				
KC-1358	EIF4G1	K52032_10D2	√	√					
KC-1614	EIF4G1	K52032_2E4		√					
KC-1180	EIF4G1	K52029_12A7		√					
KC-17367	PKC-gamma	K52063_14C11		√					
KC-17361	PKC-gamma	K52063_16A11		√	√				
KC-2770	PKC-gamma	K52063_12G7			√				
KC-2708	PKC-gamma	K52063_19A4		√					
RC-7002	PKC-gamma	K01_3L57	√	√					
RC-5971	WWOX	K01_2Q01	√	√					
KC-28813	WWOX	K1H021_15C1			√				
KC-28795	WWOX	K1H021_18E8			√				
KC-4002	WWOX	K1H021_6B9		√					
RC-15510	mGluR1	K01_3T22	√						
RC-5291	NPC2	K01_1U79	√	√					
RC-5827	NPC2	K01_2N55	√	√				√	
RC-3892	NPC2	K03_1K66		√					

Catalog No.	Products	Clone No.	WB	IHC	IP	ELISA	IF	ICC	Epitope mapping
RC-5972	XRCC1	K01_2Q02	√	√				√	
KC-6174	XRCC1	K01_2S06	√	√					
RC-16763	XRCC1	K01_4R89	√	√			√		
KC-3222	SERPINI1	K94050_6H4		√	√				
OC-553	SERPINI1			√					
OC-398	SERPINI1		√						
RC-15511	FUS	K01_3T23	√						
RC-5311	PRNP	K01_1X09	√	√					
RC-15096	STUB1	K01_3P04	√		√				
RC-4952	STUB1	K01_1Y86	√		√			√	
OC-183	STUB1		√						
KC-3138	STUB1	K24038_4E6		√					
RC-4264	TUBB4A	K01_1N54	√	√				√	
RC-5843	OPTN	K01_2N71	√	√					
RC-3045	SIRT2	K01_1Y41	√	√					
RC-4149	SIRT2	K01_1L48	√						
KC-6092	SIRT2	K01_2R23	√				√		
RN-041	TPP1	K1H013_12G7	√	√					
RC-5425	TPP1	K01_2J44	√						
RC-15200	hnRNP A1	K01_3Q09	√						
RC-5777	LMNA	K01_2N05	√	√				√	
RC-4593	LMNA	K01_1T34	√	√				√	
KC-6308	LMNA	K01_2T43	√				√		
RC-5602	Aconitase 2	K01_2L26	√	√				√	
RC-15079	Aconitase 2	K01_3N86	√						
KC-28177	PINK1	K02_1J02	√						
KC-2826	VPS53	K1E055_4H2		√					
KC-3380	VPS53	K1E055_2F5	√						
RC-4092	APG5L	K01_1M90	√					√	
KC-4273	APG5L	K01_1K18	√	√					
KC-6206	APG5L	K01_2S38	√	√					
KC-2488	Androgen Receptor	KAA279_2F5	√	√	√				
KC-19565	Androgen Receptor	KAA279_7B3		√					
RC-17015	Androgen Receptor	K01_4U44	√	√			√		
RC-4451	PFN1	K01_1L33	√	√				√	
RC-16852	Parkin	K01_4S79	√						
KC-30575	SPTBN2	K29098_1E6		√					
RN-11737	SPTBN2	K29098_2H8		√					
KC-45712	ATXN3	KBL021_4A11	√	√					
KC-45516	ATXN3	KBL021_20G3	√	√					
KC-45538	ATXN3	KBL021_10H11	√	√					
RC-16913	OPA1	K01_4T41	√						
KC-3085	AMACR	K01_2T65	√					√	
RC-3039	SQSTM1	K01_2U41	√	√	√			√	
RC-6418	SQSTM1	K01_2U59	√					√	
RC-6874	Granulin	K01_3K27	√	√					

Catalog No.	Products	Clone No.	WB	IHC	IP	ELISA	IF	ICC	Epitope mapping
RC-6648	Granulin	K01_2X91	√	√					
KC-25775	Granulin	KAA273_10F8	√						
KC-3084	BACE1	K02_1J05	√						
RC-16872	BACE1	K01_4S99	√						
KC-25834	PLP1	KAA345_11A3	√	√					
RC-15056	MT-ND1	K01_3N63	√						
RC-15622	NMDAR2A	K01_3U35	√						
RC-15565	ADAM10	K01_3T77	√						
KC-3747	APTX	K92069_17C5	√	√	√				
RC-4205	APTX	K01_1M95	√					√	
KC-3176	ATXN10	K92055_8D11			√				
KC-17338	ATXN10	K92055_1G4			√				
OC-353	ATXN10		√						
KC-3097	C9orf72	K02_1J03		√					
RC-16310	Connexin 32	K01_4M30	√						
RC-15550	Dopamine	K01_3T62	√						
RC-4313	ELOVL5	K01_1K33	√					√	
KC-47424	EXOSC8	K1H060_13A12	√						
KC-47536	EXOSC8	K1H060_12A5	√						
RC-5533	FIG4	K01_2K55	√						
RC-16721	GBA	K01_4R47	√						
RC-15882	GluA4	K01_3X97	√						
RC-16511	HEAB	K01_4P34	√						
KC-6304	HtrA2	K01_2T38	√		√				
RC-4810	HtrA2	K01_1S62	√						
RC-16713	HtrA2	K01_4R39	√						
RC-15683	Huntingtin	K01_3U96	√						
RC-16088	MAG	K01_4K06	√						
RC-5297	MPZ	K01_1U33	√						
RC-4609	Nesprin1	K01_1U66	√						
RC-15705	Nesprin1	K01_3W19	√						
RC-16429	PMP22	K01_4N51	√						
RC-5869	PNKP	K01_2N97	√	√					
KC-6091	PPP5C	K01_2R22	√						
RC-4657	PUM1	K01_1X36	√	√				√	
RC-15898	PUM1	K01_3Y14	√						
RC-15908	Prostatic Acid	K01_3Y24	√						
RC-15580	S100A1	K01_3T92	√	√					
KC-3082	S100A1	K02_1J04		√					
RC-16442	SLC9A1	K01_4N64	√						
RC-3061	SMN	K01_1R61	√	√	√			√	
KC-4440	SMN	K01_1J74	√		√				
RC-5077	SMN	K01_1R60	√	√					
RC-16034	SorLA	K01_4J51	√						
RC-16308	TAF1	K01_4M28	√						
RC-5938	TBP	K01_2P67	√	√				√	

Catalog No.	Products	Clone No.	WB	IHC	IP	ELISA	IF	ICC	Epitope mapping
KC-4138	TBP	K01_1K24	√						
KC-4450	TBP	K01_1J65		√					
RC-5441	TFG	K01_2J60	√	√					
RC-5440	TFG	K01_2J59	√	√				√	
RC-16543	TOE1	K01_4P66	√						
RC-16699	TRPM7	K01_4R25	√						

Flagship Products -Antibody Pairs

Catalog No.	Products	Captrue Antibody	Detection Antibody
ES-019	Beta Amyloid 1-40	KC-109	KC-1732
ES-015	Beta Amyloid 1-40	KC-1732	KC-108
ES-016	Beta Amyloid 1-40	KC-110	KC-1732
ES-017	Beta Amyloid 1-40	KC-1732	KC-110
ES-200	Beta Amyloid 1-42	KC-526	KC-1732
ES-020	Beta Amyloid 1-42	KC-1732	KC-630
ES-201	Beta Amyloid 1-42	KC-630	KC-1732
ES-025	PGP9.5	KC-473	KC-092
ES-021	PGP9.5	KC-472	KC-092
ES-022	PGP9.5	KC-093	KC-473
ES-024	PGP9.5	KC-097	KC-093
ES-119	GFAP	KC-1119	KC-957
ES-120	GFAP	KC-2847	KC-957
ES-121	GFAP	KC-960	KC-1119
ES-035	NEFL	KC-499	KC-495
ES-554	NEFL	KC-683	KC-495
ES-1700	NEFL	KC-499	KC-495
ES-556	NEFL	KC-1015	KC-495
ES-285	alpha Synuclein	KC-113	KC-114
ES-034	alpha Synuclein	KC-1488	KC-1487
ES-033	alpha Synuclein	KC-1487	KC-1488
ES-333	IL17A	KC-3009	KC-3000
ES-1513	IL17A	KC-9549	KC-3000
ES-331	IL17A	KC-2993	KC-1841
ES-1514	IL17A	KC-2993	KC-3000
ES-332	IL17A	KC-3000	KC-2993
ES-1515	IL17A	KC-9561	KC-3000
ES-940	TDP-43	KC-8430	KC-8434
ES-941	TDP-43	KC-8425	KC-8434

Catalog No.	Products	Captrue Antibody	Detection Antibody
ES-942	TDP-43	KC-8429	KC-8434
ES-811	LRRK2	KC-8332	KC-8365
ES-812	LRRK2	KC-8332	KC-8366
ES-145	PARK7	KC-1477	KC-1478
ES-129	PARK7	KC-799	KC-1478
ES-854	PARK7	KC-1478	KC-799
ES-855	PARK7	KC-1478	KC-1477
ES-131	PARK7	KC-1478	KC-1296
ES-132	Neurofilament Heavy Polypeptide	KC-1588	KC-2919
ES-4781	Neurofilament Heavy Polypeptide	KC-1590	KC-2919
ES-133	Neurofilament Heavy Polypeptide	KC-1588	KC-2921
ES-134	Neurofilament Heavy Polypeptide	KC-1589	KC-2919
ES-965	ANXA11	KC-7516	KC-2635
ES-966	ANXA11	KC-7517	KC-7516
ES-967	ANXA11	KC-7518	KC-7520
ES-3419	L1CAM	KC-46674	KC-46670
ES-3423	L1CAM	KC-46674	KC-1805
ES-1040	Drebrin	KC-1963	KC-7940
ES-1041	Drebrin	KC-2108	KC-2290
ES-1042	Drebrin	KC-7940	KC-7943
ES-788	IL31	KC-8321	KC-8323
ES-789	IL31	KC-8322	KC-8323
ES-790	IL31	KC-8321	KC-8326
ES-782	Hsp27	KC-1096	KC-1094
ES-783	Hsp27	KC-1094	KC-1096
ES-784	Hsp27	KC-1096	KC-1248
ES-107	Ferritin Heavy Chain	KC-190	KC-191
ES-1529	ARSB	KC-21837	KC-21756
ES-1530	ARSB	KC-21827	KC-21756
ES-1531	ARSB	KC-21777	KC-21756
ES-2237	DKK1	KC-28121	KC-28122
ES-2238	DKK1	KC-2424	KC-28123
ES-2239	DKK1	KC-28121	KC-28123
ES-897	VAMP1	KC-10380	KC-10382
ES-2133	SUMF1	KC-29459	KC-30418
ES-2134	SUMF1	KC-29649	KC-30418
ES-2135	SUMF1	KC-29471	KC-30418
ES-913	ERBB4	KC-2501	KC-8176
ES-914	ERBB4	KC-7619	KC-2501
ES-915	ERBB4	KC-7619	KC-8176

Catalog No.	Products	Captrue Antibody	Detection Antibody
ES-1031	CTSF	KC-7939	KC-8227
ES-1032	CTSF	KC-2986	KC-8228
ES-1033	CTSF	KC-7939	KC-8228
ES-2007	CD10	KC-28653	KC-27523
ES-2008	CD10	KC-28645	KC-27523
ES-2009	CD10	KC-28648	KC-27523
ES-2066	PITRM1	KC-28347	KC-28457
ES-2067	PITRM1	KC-28347	KC-28324
ES-2068	PITRM1	KC-28347	KC-28437
ES-670	ATXN1	KC-2029	KC-2497
ES-1210	Lysosome Membrane Protein 2	KC-7790	KC-7793
ES-1211	Lysosome Membrane Protein 2	KC-7790	KC-7791
ES-1212	Lysosome Membrane Protein 2	KC-7791	KC-7790
ES-2169	UFM1	KC-11552	KC-780
ES-2170	UFM1	KC-11552	KC-11549
ES-2171	UFM1	KC-11552	KC-11548
ES-1457	CADM3	KC-26900	KC-26625
ES-1458	CADM3	KC-26903	KC-26898
ES-1459	CADM3	KC-26903	KC-26625
ES-1307	EXOSC1	KC-28551	KC-28550
ES-1308	EXOSC1	KC-27338	KC-28551
ES-1309	EXOSC1	KC-28548	KC-28550
ES-2172	UNC5C	KC-23007	KC-22982
ES-2173	UNC5C	KC-23016	KC-22982
ES-2174	UNC5C	KC-23010	KC-22982
ES-1998	Matrin-3	KC-28899	KC-28938
ES-1999	Matrin-3	KC-28899	KC-28931
ES-2000	Matrin-3	KC-28899	KC-28946
ES-1851	CHMP2B	KC-28161	KC-28159
ES-1852	CHMP2B	KC-28160	KC-28163
ES-1853	CHMP2B	KC-28160	KC-28161
ES-934	TDP-25 / TDP-35 / TDP-43	KC-8431	KC-8433
ES-935	TDP-25 / TDP-35 / TDP-43	KC-8424	KC-8433
ES-936	TDP-25 / TDP-35 / TDP-43	KC-8426	KC-8427
ES-937	TDP-35 / TDP-43	KC-8428	KC-8435
ES-938	TDP-35 / TDP-43	KC-8425	KC-8435
ES-939	TDP-35 / TDP-43	KC-8427	KC-8425

Flagship Products-Recombinant Human Proteins

Catalog No.	Products	Protein Expression Range	Expression Systems	Tag
PC-002	p-Tau181	Met1-Leu441	<i>Escherichia coli</i>	C-His
PC-005	p-Tau181	Met1-Leu441	<i>Escherichia coli</i>	C-His
PC-006	p-Tau217	Met1-Leu441	<i>Escherichia coli</i>	C-His
PC-007	p-Tau231	Met1-Leu441	<i>Escherichia coli</i>	C-His
PC-013	p-Tau205	Met1-Leu441	<i>Escherichia coli</i>	C-His
PC-014	p-Tau212	Met1-Leu441	<i>Escherichia coli</i>	C-His
PC-012	p-Tau	Met1-Leu441	<i>Escherichia coli</i>	C-His
PC-008	Tau (acetyl K274)	Met1-Leu441	<i>Escherichia coli</i>	C-His
PC-009	Tau (acetyl K281)	Met1-Leu441	<i>Escherichia coli</i>	C-His
PP-11309	Tau	Met1-Leu441	<i>Escherichia coli</i>	C-His
PE-001	beta Amyloid 1-40	Asp672- Val711	Synthesized	tag free
PE-002	beta Amyloid 1-42	Asp672-Ala713	Synthesized	tag free
PE-003	beta Amyloid 1-40	Asp672- Val711	Synthesized	tag free
PE-004	beta Amyloid 1-42	Asp672-Ala713	Synthesized	tag free
PQ-382	APP	Glu231-Asp560	HEK293	C-hFc & C-His
PP-4463	ABAT	Ala31-Lys470	<i>Escherichia coli</i>	C-His
PP-5398	ABCA2	Arg2311-Asn2430	<i>Escherichia coli</i>	C-His
PP-1238	AIF1	Glu21-Glu130	<i>Escherichia coli</i>	C-His
PP-8642	ALDH1L1	Ser311-Asp510	<i>Escherichia coli</i>	C-His
PP-308	ANXA11	Asp291-Asn370	<i>Escherichia coli</i>	C-His
PP-3684	ATP13A2	Ile501-Val800	<i>Escherichia coli</i>	C-His
PP-173	ATP1A3	Asn171-Val240	<i>Escherichia coli</i>	C-His
PP-4918	ATXN1	Ser161-Ala440	<i>Escherichia coli</i>	C-His
PP-6168	ATXN2	Leu371-Thr660	<i>Escherichia coli</i>	C-His
PP-313	ATXN3	Gly11-Glu290	<i>Escherichia coli</i>	C-His
PP-6046	ATXN7	Ser651-Ser850	<i>Escherichia coli</i>	C-His
PP-1532	BDNF	Ala151-Met220	<i>Escherichia coli</i>	C-His
PP-011	BIRC5	Ala41-Lys130	<i>Escherichia coli</i>	C-His
PP-3006	CD40	Tyr31-Asp190	<i>Escherichia coli</i>	N-SUMO & C-His
PP-773	CD40LG	Phe111-Lys260	<i>Escherichia coli</i>	C-His
PP-26348	CD68	Thr31-Tyr160	<i>Escherichia coli</i>	C-His
PP-1224	CDCP1	Gly701-Asp820	<i>Escherichia coli</i>	C-His
PP-169	CDH1	Leu791-Glu880	<i>Escherichia coli</i>	C-His
PP-10828	CHAT	Phe321-Leu450	<i>Escherichia coli</i>	C-His
PP-10644	CHMP2B	Asp11-Lys180	<i>Escherichia coli</i>	C-His
PP-5616	CNP	Met21-Ile420	<i>Escherichia coli</i>	C-His
PQ-3497	CNTNAP2	Ser41-Gly180	HEK293	C-His

Catalog No.	Products	Protein Expression Range	Expression Systems	Tag
PP-1515	CORO1A	Gly381-Ala460	<i>Escherichia coli</i>	C-His
PP-529	CSPG4	Thr801-Glu870	<i>Escherichia coli</i>	C-His
PP-135	DBH	Ala41-Val610	<i>Escherichia coli</i>	C-His
PP-1936	DCX	Arg171-Ser310	<i>Escherichia coli</i>	C-His
PP-039	DKK1	Thr32-His266	<i>Escherichia coli</i>	N-SUMO & C-His
PP-1718	DLG4	Ile161-Asp710	<i>Escherichia coli</i>	C-His
PP-6142	DMXL2	Lys1871-His2140	<i>Escherichia coli</i>	C-His
PP-134	ENO2	Met1-Leu434	<i>Escherichia coli</i>	C-His
PP-11055	EOMES	Ser601-Lys670	<i>Escherichia coli</i>	C-His
PP-12632	FABP7	Arg31-Lys110	<i>Escherichia coli</i>	C-His
PP-5350	FEV	Leu11-Leu160	<i>Escherichia coli</i>	C-His
PP-11810	FOLH1	Asn51-Pro550	<i>Escherichia coli</i>	N-SUMO & C-His
PP-786	FUS	Gly231-Gly390	<i>Escherichia coli</i>	C-His
PP-708	GABBR2	Gln761-Glu880	<i>Escherichia coli</i>	C-His
PP-11352	GAD2	Leu381-Glu520	<i>Escherichia coli</i>	N-SUMO & C-His
PP-751	GAP43	Val11-Glu110	<i>Escherichia coli</i>	C-His
PP-470	GFAP	Gly61-Leu370	<i>Escherichia coli</i>	C-His
PP-317	GFRA1	Gln51-Glu280	<i>Escherichia coli</i>	N-SUMO & C-His
PP-626	GFRA2	Asp341-Leu410	<i>Escherichia coli</i>	C-His
PQ-541	GFRA3	Asp32-Asn374	HEK293	C-His
PP-5748	GLS	Asp541-Thr660	<i>Escherichia coli</i>	C-His
PP-12111	GRIN1	His171-Arg260	<i>Escherichia coli</i>	C-His
PP-424	GRIN2B	Leu1251-Asp1380	<i>Escherichia coli</i>	C-His
PP-234	GRN	Lys491-Thr570	<i>Escherichia coli</i>	C-His
PP-4970	HDLBP	Ser11-Val300	<i>Escherichia coli</i>	C-His
PP-3935	HNRNPA1	Met1-Phe372	<i>Escherichia coli</i>	C-His
PP-159	ITGAM	Arg131-Met350	<i>Escherichia coli</i>	N-SUMO & C-His
PP-4436	KCNJ6	His231-Glu420	<i>Escherichia coli</i>	C-His
PP-6100	KIF5A	Gln341-Gln510	<i>Escherichia coli</i>	C-His
PQ-3227	L1CAM	Leu11-Glu1120	HEK293	C-His
PP-137	LGALS1	Met1-Asp135	<i>Escherichia coli</i>	C-His
PP-202	LGALS3	Ser91-Ile250	<i>Escherichia coli</i>	C-His
PP-1951	LMX1B	Lys171-Phe400	<i>Escherichia coli</i>	C-His
PP-10511	LRRK2	Asp861-Leu1040	<i>Escherichia coli</i>	C-His
PP-157	MAP2	Glu401-Pro500	<i>Escherichia coli</i>	C-His
PP-070	MBP	Gly101-Ser190	<i>Escherichia coli</i>	C-His
PP-520	MOG	Gln31-Trp150	<i>Escherichia coli</i>	C-His
PQ-3871	MPZ	Val31-Val150	HEK293	N-MBP & C-His
PP-560	NCAM1	Gln21-Asn200	<i>Escherichia coli</i>	N-SUMO & C-His

Catalog No.	Products	Protein Expression Range	Expression Systems	Tag
PP-744	NEFH	Leu101-Glu480	<i>Escherichia coli</i>	C-His
PP-106	NEFL	Lys91-Glu510	<i>Escherichia coli</i>	C-His
PP-107	NEFM	Glu101-Glu650	<i>Escherichia coli</i>	C-His
PP-8180	NEK1	Lys681-Ala1240	<i>Escherichia coli</i>	C-His
PP-10543	NEUROD1	Met11-Ser250	<i>Escherichia coli</i>	N-SUMO & N-His
PP-591	NGFR	Lys141-Glu220	<i>Escherichia coli</i>	C-His
PP-1054	NOTCH1	Glu1901-Leu1980	<i>Escherichia coli</i>	N-SUMO & C-His
PP-4149	NPHS2	Glu11-Ala100	<i>Escherichia coli</i>	C-His
PP-5092	OCLN	Met271-Gln520	<i>Escherichia coli</i>	C-His
PP-25085	OLIG3	Arg11-Ala130	<i>Escherichia coli</i>	C-His
PP-1482	OMG	Thr301-Ser370	<i>Escherichia coli</i>	C-His
PP-5306	OPTN	Leu41-Glu540	<i>Escherichia coli</i>	C-His
PP-363	PARK7	Ala11-Gln180	<i>Escherichia coli</i>	C-His
PP-10537	PAX6	Glu181-Pro250	<i>Escherichia coli</i>	C-His
PP-4291	PDE5A	Gln541-Gln860	<i>Escherichia coli</i>	C-His
PP-188	PDGFRA	Ser961-His1040	<i>Escherichia coli</i>	C-His
PP-189	PECAM1	Lys631-Ser700	<i>Escherichia coli</i>	C-His
PP-4733	PFN1	Met1-Tyr140	<i>Escherichia coli</i>	C-His
PP-5571	PLAA	Glu301-Leu460	<i>Escherichia coli</i>	C-His
PP-2884	PPP1R1B	Phe11-Gln100	<i>Escherichia coli</i>	C-His
PP-1306	PRKN	Thr351-Arg420	<i>Escherichia coli</i>	C-His
PP-12650	PSEN1	Gly301-Lys380	<i>Escherichia coli</i>	C-His
PP-25388	PSEN2	Glu11-Thr80	<i>Escherichia coli</i>	C-His
PP-758	PTN	Lys41-Gly160	<i>Escherichia coli</i>	C-His
PP-124	PTPRC	Tyr241-Asp310	<i>Escherichia coli</i>	C-His
PP-12084	RANGRF	Val31-Pro160	<i>Escherichia coli</i>	N-SUMO & C-His
PP-6482	RBFOX3	Ala51-Gly190	<i>Escherichia coli</i>	C-His
PP-4554	RNF5	Pro11-Gly110	<i>Escherichia coli</i>	C-His
PP-4903	RORC	Ala11-Pro260	<i>Escherichia coli</i>	C-His
PP-9203	RPH3A	Asn271-His690	<i>Escherichia coli</i>	C-His
PP-1827	S100A1	Met1-Ser94	<i>Escherichia coli</i>	C-His
PP-1719	S100A12	Met1-Glu92	<i>Escherichia coli</i>	C-His
PP-081	S100B	Leu11-Met80	<i>Escherichia coli</i>	C-His
PP-24819	SLC14A2	Gly451-Asp520	<i>Escherichia coli</i>	C-His
PP-4172	SLC17A6	Glu501-Asp580	<i>Escherichia coli</i>	C-His
PP-12302	SLC1A2	Leu501-Trp570	<i>Escherichia coli</i>	C-His
PQ-802	SLC6A4	Gln11-Glu80	HEK293	N-MBP & C-His
PP-670	SNAP23	Gln11-Ser110	<i>Escherichia coli</i>	C-His
PP-506	SNAP25	Met1-Gly206	<i>Escherichia coli</i>	C-His

Catalog No.	Products	Protein Expression Range	Expression Systems	Tag
PP-272	SNCA	Met1-Ala140	<i>Escherichia coli</i>	C-His
PP-044	SOD1	Lys71-Asn140	<i>Escherichia coli</i>	C-His
PP-321	SOX10	Arg151-Gly220	<i>Escherichia coli</i>	C-His
PQ-029	SOX2	Lys121-Gly310	HEK293	N-MBP & C-His
PP-433	SQSTM1	Gly241-Gly320	<i>Escherichia coli</i>	C-His
PP-195	STMN1	Met1-Asp149	<i>Escherichia coli</i>	C-His
PP-4515	SV2A	Phe11-Gly160	<i>Escherichia coli</i>	C-His
PP-25791	SYNPR	Thr201-Ser260	<i>Escherichia coli</i>	C-His
PP-122	SYP	Pro231-Ser310	<i>Escherichia coli</i>	N-SUMO & N-His
PP-4051	SYT1	Lys91-Val420	<i>Escherichia coli</i>	C-His
PP-5977	TARDBP	Ser91-Pro280	<i>Escherichia coli</i>	C-His
PP-5978	TARDBP	Met1-Met414	<i>Escherichia coli</i>	C-His
PP-5525	TBK1	Glu561-Leu630	<i>Escherichia coli</i>	N-MBP & C-His
PP-4171	TBR1	Ile11-Gly390	<i>Escherichia coli</i>	C-His
PP-11100	TMEM119	Lys121-Leu240	<i>Escherichia coli</i>	C-His
PP-1103	TNFRSF19	Leu341-Thr410	<i>Escherichia coli</i>	C-His
PQ-3943	TOR1A	Arg41-Asp170	HEK293	N-MBP & C-His
PP-5998	TPH2	Leu31-Asp150	<i>Escherichia coli</i>	C-His
PP-4458	TUBA4A	Gln11-Tyr440	<i>Escherichia coli</i>	C-His
PP-6000	UBQLN2	Pro11-Arg130	<i>Escherichia coli</i>	C-His
PP-145	UCHL1	Met1-Cys220	<i>Escherichia coli</i>	C-His
PP-1050	VAPB	Lys131-Ala210	<i>Escherichia coli</i>	C-His
PP-25128	VCP	Gly271-Gln490	<i>Escherichia coli</i>	C-His
PP-12683	VPS35	Ile451-Gly520	<i>Escherichia coli</i>	C-His

Empowering Protein Science



www.absea.bio

info@abseabio.com

Germany | USA | China