

IMMUNOGLOBULINS



Recombinant Human Immunoglobulins and
Ig-targeting mAbs (magnetic beads)

Significance

Antibody typing is essential for identifying antibody isotypes, subtypes, and light chain types, each with distinct functions and different associations with pathological and physiological states. Specifically identifying antibody subtypes is fundamental to various research areas and has critical applications in:

IgG4
Related Diseases

Autoimmune
Disorders

IgG subclass
Deficient Diseases

Hypersensitivity
Reactions

Infectious
Diseases

Strengths

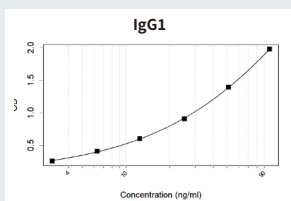
Absea® provides a comprehensive range of high-quality mAbs (magnetic beads) for immunoglobulin isotyping and subtyping. Our portfolio includes: IgG1, IgG2, IgG3, IgG4, IgA, IgE, IgM, Kappa and Lambda light chains.

Features

Extensive Coverage of mAbs for
Multi-Species Immunoglobulin
Isotyping & Subtyping

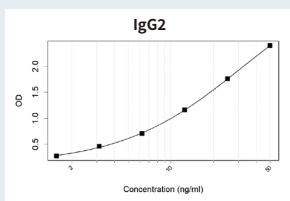
High Specificity mAbs Against
Various Subtypes with
No Cross-Reactivity

Isotype-specific IP magnetic
beads for IgA, IgM, IgG1-4,
and IgE



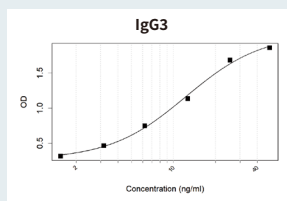
Sandwich ELISA

KC-1245 - KC-424



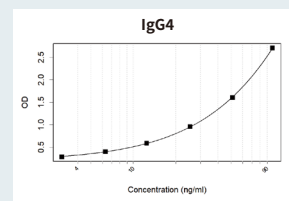
Sandwich ELISA

KC-427 - KC-424



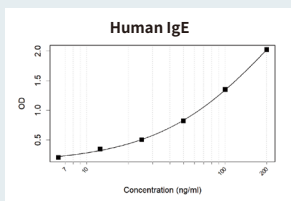
Sandwich ELISA

KC-418 - KC-424



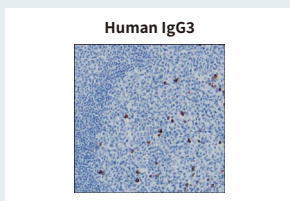
Sandwich ELISA

KC-419 - KC-083

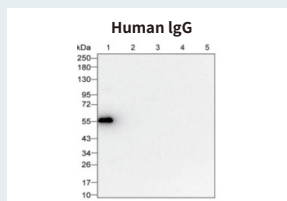


Sandwich ELISA

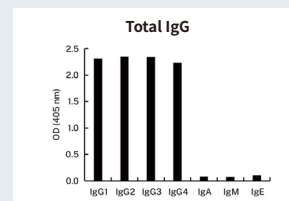
KC-2848 - KC-081



KC-086 Human tonsil



KC-424



Cross reactivity

KC-424

Flagship Products - Monoclonal Antibodies

Catalog No.	Products	Clone No.	WB	IHC	ELISA
KC-072	Anti-Human IgA Antibody	KT41	✓	✓	✓
KC-079	Anti-Human IgA Antibody	KT40			✓
KC-080	Anti-Human IgA Antibody	KT153	✓	✓	
KC-407	Anti-Human IgA Antibody	KT13	✓		
KH-079	Anti-Human IgA Antibody (HRP)	KT40			✓
RC-16441	Recombinant Anti-Human IgD Antibody	K01_4N63	✓		
RC-17543	Recombinant Human IgD Antibody	K01_4X89	✓		
KC-081	Anti-Human IgE Antibody	4C3	✓		✓
KC-436	Anti-Human IgE Antibody	K06263_1B4	✓		
KC-437	Anti-Human IgE Antibody	K06263_3B5	✓		
KC-438	Anti-Human IgE Antibody	K06263_7H8	✓		
KH-082	Anti-Human IgE Antibody (HRP)	1A2			✓
KC-083	Anti-Human IgG Antibody	KT132	✓		✓
KC-084	Anti-Human IgG Antibody	KT48	✓	✓	✓
KC-420	Anti-Human IgG Antibody	KT131	✓	✓	
KC-424	Anti-Human IgG Antibody	KT47	✓	✓	✓
KC-671	Anti-Human IgG Antibody	K03018_3F3	✓	✓	
KH-083	Anti-Human IgG Antibody (HRP)	KT132			✓
KH-424	Anti-Human IgG Antibody (HRP)	KT47			✓
KC-8516	Anti-Human IgG Antibody	KT15		✓	
KC-1245	Anti-Human IgG1 Antibody	KT46			✓
KC-1616	Anti-Human IgG1 Antibody	K16105_1D5	✓		✓
KH-1616	Anti-Human IgG1 Antibody (HRP)	K16105_1D5			✓
RC-16484	Recombinant Human IgG1 Antibody	K01_4P07	✓		
OC-129	Anti-Human IgG2 Antibody	N/A		✓	
KC-421	Anti-Human IgG2 Antibody	KT138		✓	✓
KC-427	Anti-Human IgG2 Antibody	K06302_19F4		✓	✓
KC-429	Anti-Human IgG2 Antibody	K06306_22C5		✓	✓
KH-427	Human IgG2 Antibody (HRP)	K06302_19F4			✓
KH-429	Human IgG2 Antibody (HRP)	K06306_22C5			✓
RC-15097	Recombinant Human IgG2 Antibody	K01_3P05	✓		
KC-8605	Anti-Human IgG2 Antibody	K06088_9A9		✓	
KC-086	Anti-Human IgG3 Antibody	K16244_8D9	✓	✓	✓
KC-087	Anti-Human IgG3 Antibody	K06089_13E12			✓
KC-418	Anti-Human IgG3 Antibody	KT133	✓	✓	
KC-425	Anti-Human IgG3 Antibody	K16244_1A5	✓	✓	✓
KC-2883	Anti-Human IgG3 Antibody	K06089_8E4			✓
KH-2883	Anti-Human IgG3 Antibody (HRP)	K06089_8E4			✓
KC-088	Anti-Human IgG4 Antibody	K06216_14H8	✓	✓	
KC-419	Anti-Human IgG4 Antibody	KT130	✓	✓	✓
KC-662	Anti-Human IgG4 Antibody	KT209	✓		✓
KC-2881	Anti-Human IgG4 Antibody	K06216_5G4	✓		

Catalog No.	Products	Clone No.	WB	IHC	ELISA
RC-5986	Recombinant Anti-Human IgG4 Antibody	K01_2Q16	✓	✓	
KC-075	Anti-Human IgM Antibody	KT16	✓		✓
KC-076	Anti-Human IgM Antibody	KT194	✓	✓	
KC-2885	Anti-Human IgM Antibody	KT38			✓
KH-2885	Anti-Human IgM Antibody (HRP)	KT38			✓
KC-6049	Anti-Human IgM Antibody	K01_2Q79		✓	
KC-431	Anti-Human Lambda Antibody	K06221_5H1		✓	
KC-1512	Anti-Human Lambda Antibody	K40033_7C12		✓	
KC-1650	Anti-Human Lambda Antibody	K40033_4A4	✓		
KC-1651	Anti-Human Lambda Antibody	K40033_10A2	✓		
KC-1783	Anti-Human Lambda Antibody	K40033_4F3	✓		
KC-7996	Anti-Human Lambda Antibody	K40033_1H8			✓
KC-7997	Anti-Human Lambda Antibody	K40033_13B12			✓
KC-7998	Anti-Human Lambda Antibody	K40033_7G7			✓
KB-7996	Human Lambda Antibody (Biotin)	K40033_1H8			✓
KB-7997	Human Lambda Antibody (Biotin)	K40033_13B12			✓
KB-7998	Human Lambda Antibody (Biotin)	K40033_7G7			✓

Flagship Products - Antibody Pairs

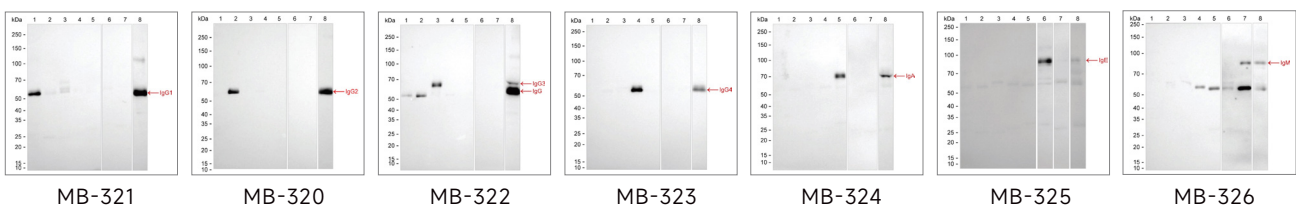
Catalog No.	Products	Captrue Antibody	Detection Antibody	Protein Standard
ES-105	Anti-Human IgA Antibody Pair	KC-072	KC-079	KC-006
ES-087	Anti-Human IgE Antibody Pair	KC-2848	KC-081	KC-005
ES-088	Anti-Human IgE Antibody Pair	KC-081	KC-2848	KC-005
ES-090	Anti-Human IgE Antibody Pair	KC-436	KC-2848	KC-005
ES-092	Anti-Human IgG1 Antibody Pair	KC-1245	KC-083	KC-001
ES-312	Anti-Human IgG1 Antibody Pair	KC-1245	KC-424	
ES-094	Anti-Human IgG2 Antibody Pair	KC-427	KC-424	KC-002
ES-096	Anti-Human IgG2 Antibody Pair	KC-421	KC-429	KC-002
ES-098	Anti-Human IgG3 Antibody Pair	KC-425	KC-2883	KC-003
ES-101	Anti-Human IgG3 Antibody Pair	KC-418	KC-083	KC-003
ES-313	Anti-Human IgG3 Antibody Pair	KC-418	KC-424	
ES-102	Anti-Human IgG4 Antibody Pair	KC-419	KC-083	KC-004
ES-314	Anti-Human IgG4 Antibody Pair	KC-419	KC-424	
ES-315	Anti-Human IgG4 Antibody Pair	KC-419	KC-083	
ES-106	Anti-Human IgM Antibody Pair	KC-075	KC-2885	KC-007
ES-1099	Human IGLC2 Antibody Pair	KC-7996	KC-7997	PP-3217
ES-1101	Human IGLC2 Antibody Pair	KC-7996	KC-7998	PP-3217
ES-1100	Human IGLC2 Antibody Pair	KC-7997	KC-7996	PP-3217

Flagship Products - Recombinant Human Proteins

Catalog No.	Products	Protein Expression Range	Expression Systems	Tag
KC-001	Recombinant Human IgG1 Protein	-	-	Tag Free
KC-002	Recombinant Human IgG2 Protein	-	-	Tag Free
KC-003	Recombinant Human IgG3 Protein	-	-	Tag Free
KC-004	Recombinant Human IgG4 Protein	-	-	Tag Free
KC-005	Recombinant Human IgE Protein	-	-	Tag Free
KC-006	Recombinant Human IgA2 Protein	-	-	Tag Free
KC-007	Recombinant Human IgM Protein	-	-	Tag Free

Flagship Products – IP Magnetic Beads

Catalog No.	Products	Clone No.	Products
MB-321	Anti-Human IgG1 Magnetic Beads	MB-324	Anti-Human IgA Magnetic Beads
MB-320	Anti-Human IgG2 Magnetic Beads	MB-325	Anti-Human IgE Magnetic Beads
MB-322	Anti-Human IgG3 Magnetic Beads	MB-326	Anti-Human IgM Magnetic Beads
MB-323	Anti-Human IgG4 Magnetic Beads		



Application: IP

Lane 1: Human IgG1 magnetic beads
Lane 2: Human IgG2 magnetic beads
Lane 3: Human IgG3 magnetic beads
Lane 4: Human IgG4 magnetic beads

Lane 5: Human IgA magnetic beads
Lane 6: Human IgE magnetic beads
Lane 7: Human IgM magnetic beads
Lane 8: Input