

SPATIAL PATHOLOGY



IHC-Validated Antibody Series

Significance

Immunohistochemistry (IHC) uses specific antigen-antibody interactions visualized by chemical stains to locate and quantify proteins and peptides within cells and tissues. This method is essential in several key areas:

Disease Diagnosis:

Identify and differentiate cancer types and other pathologies

Therapeutic Guidance:

Inform the selection of targeted therapies

Spatial Proteomics:

Map protein distribution and interactions within tissues

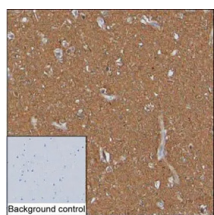
Research indicates that biomarkers like Ki67, p53, CK20, CK7, and PD-L1 are crucial for early cancer screening and integral to early detection strategies.

Features

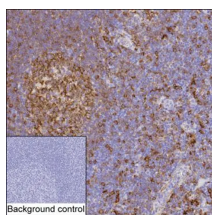
High specificity for tissue and subcellular localization

Comprehensive portfolio with antibodies validated for IHC, spanning over 2,400 targets

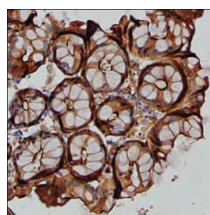
Superior performance ratings from customers



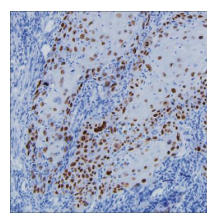
Cat #	Target	Tissue
KC-473	UCHL1	Brain tissue



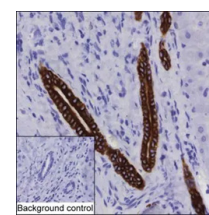
Cat #	Target	Tissue
KC-1890	HLA-DRA	Tonsil tissue



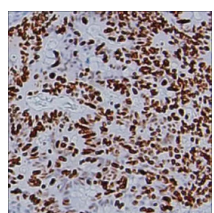
Cat #	Target	Tissue
KC-175	CEACAM5	Colon tissue



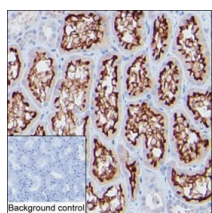
Cat #	Target	Tissue
KC-1566	TP63	Urethral tumor



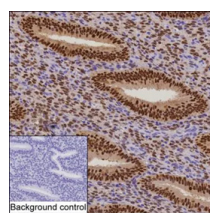
Cat #	Target	Tissue
KC-1511	KRT19	Liver tissue



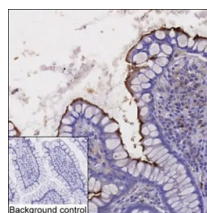
Cat #	Target	Tissue
KC-494	MKI67	Colon cancer tissue



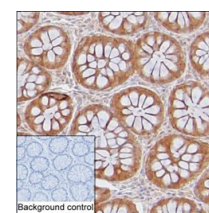
Cat #	Target	Tissue
KC-571	MME	Kidney tissue



Cat #	Target	Tissue
KC-1154	PGR	Endometrium tissue



Cat #	Target	Tissue
KC-988	ANPEP	Intestine tissue



Cat #	Target	Tissue
KC-621	LGALS3	Colon cancer tissue

Spatial pathology product list

Protein target	mAb (various applications)	Tissue
AACT	IHC&WB&FC	Endometrial cancer
ABCC3	IHC	Gall bladder
ACTA1	IHC&WB&ICC	Human colon cancer, Rat liver
ALK	IHC&WB	Human kidney
ANXA1	IHC&IP&WB&ICC&sELISA	Esophagus, Mouse esophagus
APC	IHC&IP&WB&ICC	Human colon cancer, Mouse colon
ATRX	IHC&WB	Tonsil
Androgen Receptor	IHC&IP&WB&IF	Human prostate, Human prostate carcinoma, Testis
BCL2	IHC&IP&WB	Breast cancer, Tonsil
BCL6	IHC&IP&WB&IF&sELISA	Human tonsil, Tonsil
BRAF	IHC&IP&WB	Human ovarian cancer
BRCA1	IHC	Breast, Mammary gland
Bcl 2	IHC&WB&ICC	Human tonsil
C4A	IHC&WB	Tonsil
CALB2	IHC&IP&WB&ICC	Brain
CALD1	IHC&WB	Endometrium smooth muscle, Human breast cancer, Human colon cancer
CD10	IHC&WB&IF	Human breast cancer, Human uterus, Kidney, Mouse lung, Rat kidney
CD105	IHC&IP&WB&sELISA	Human lung cancer, Placenta
CD13	IHC&WB&ICC&sELISA	Human breast cancer, Human kidney, Intestine
CD14	IHC&WB&IF	Human breast
CD16	IHC&WB	Human liver, Spleen
CD163	IHC&WB	Mouse liver, Spleen
CD1a	IHC&WB&IF	Human tonsil, Human tonsils, Mouse heart
CD2	IHC&WB	Human colon, Human tonsil carcinoma, Mouse spleen
CD20	IHC&IP&WB	Human tonsil, Spleen, Tonsil
CD21	IHC&IP&WB&IF	Human spleen, Human stomach, Human tonsil, Mouse kidney, Tonsil
CD22	IHC&IP&WB&ICC&FC&sELISA	Tonsil
CD23	IHC&WB&IF	Human lung, Human tonsil, Mouse lung, Rat kidney, Tonsil
CD30	IHC&WB	Fallopian tube
CD34	IHC&WB&IF	Human kidney, Placenta, Testis
CD35	IHC&WB	Human tonsil
CD38	IHC&IP&WB&sELISA	Human tonsil, Tonsil
CD3D	IHC&WB&IF	Human spleen
CD4	IHC&WB&IF&FC	Human amygdala, Human colon, Human stomach, Liver, Liver cancer, Mouse brain, Tonsil
CD44	IHC&IP&WB&IF&FC	Human tonsil, Tonsil
CD45	IHC&WB	Breast cancer, Colon, Human spleen
CD5	IHC&IP&WB&IF	Human livercancer, Human tonsil carcinoma, Mouse kidney, Tonsil

Protein target	mAb (various applications)	Tissue
CD63	IHC&WB&sELISA	Human breast cancer
CD68	IHC&WB&IF	Tonsil
CD7	IHC&WB&ICC&FC	Human tonsil
CD74	IHC&IP&WB	Humantonsil, Tonsil
CD79A	IHC&WB&ICC	Tonsil
CD8 alpha	IHC&WB&IF	Human colon
CD8A	IHC&WB	Human tonsil, Liver cancer
CD99	IHC&WB&ICC&FC	Human breast cancer, Tonsil
CDH1	IHC&IP&WB&ICC	Human tonsils, Liver
CDH1 (phospho S838/S840)	IHC&WB	Human breast cancer
CDK4	IHC&IP&WB	Lung cancer
CDKN1B	IHC&WB	Breast cancer
CDKN1B (phospho S10)	IHC&WB	Human breast cancer
CDKN2A	IHC&IP&WB&ICC	Endometrium
CDX2	IHC&IP&WB&ICC	Colon, Colon cancer, Human colon
CGA	IHC	Placenta
COL4A1	IHC&WB	Human liver carcinoma
CPS1	IHC&WB	Human colon cancer
CTNNBIP1	IHC&WB	Skin
CTNND1	IHC&IP&WB	Colon, Colon adenocarcinoma, Mouse colon
CTNND1 (phospho T916)	IHC&WB&ICC	Colon, Mouse colon
Cadherin-16	IHC&WB	Kidney
Calponin 1	IHC&WB	Human breast
Carbonic Anhydrase 9	IHC&WB	Human kidney cancer
Chromogranin-A	IHC&IP&WB	Mouse pancreas, Pancreas
Cyclin D1	IHC&WB	Human lung cancer
Cyclin-D1	IHC&WB&IF	Human bladder
Cytokeratin 8	IHC&WB&ICC	Human cholangiocarcinoma
Cytokeratin-1	IHC&WB	Rat skin, Skin
Cytokeratin-10	IHC&WB&IF&sELISA	Esophageal squamous cell carcinoma, Human bladder, Human tonsil, Skin
Cytokeratin-14	IHC&IP&WB&IF	Esophageal squamous cell carcinoma, Human skin, Human stomach
Cytokeratin-17	IHC&IP&WB&IF	Esophagus squamous cell carcinoma, Human liver, Human tonsil, Skin
Cytokeratin-18	IHC&IP&WB&ICC	Appendix, Human breast carcinoma, hepatocarcinoma, stomach cancer and colon cancer, Human cholangiocarcinoma, Human colon cancer
Cytokeratin-19	IHC&IP&WB&ICC&sELISA	Endometrium cancer, Human colon cancer, Liver, Mouse liver, Papillary thyroid cancer, Thyroid, Thyroid cancer
Cytokeratin-20	IHC&WB&IF	Colon, Human colon
Cytokeratin-5	IHC&WB	Human urothelial carcinoma, Skin
Cytokeratin-7	IHC&IP&WB&IF&ICC	Human lung cancer, Human uterus, Salivary gland
Cytokeratin-8	IHC&IP&WB	Human liver, Small intestine

Protein target	mAb (various applications)	Tissue
Cytokeratin-8 (phospho S23)	IHC&WB&ICC	Human colon cancer
DNTT	IHC&WB	Mouse thymus, Thymus
DiMethyl-Histone H3 (Lys4)	IHC&WB	Human liver
EGFR	IHC&IP&WB&IF&ICC	Human breast cancer, Placenta
EGFR (phospho Y1068)	IHC&WB	Human breast cancer
EGFR (phospho Y1092)	IHC&WB	Human breast cancer
EGFR (phospho Y1173)	IHC&WB&ICC	Human lung cancer
ENO2	IHC&WB&ICC	Brain, Human small cell carcinoma of lung
ERCC1	IHC&WB&ICC	Testis
ERG	IHC&WB	Human kidney
EZH2	IHC&IP&WB	Testis
EpCAM	IHC&IP&WB&ICC&FC	Colon, Human colon cancer, Human stomach carcinoma, Thyroid, Thyroid cancer, Thyroid gland
Estrogen Inducible Protein pS2	IHC&WB	Stomach
F13A1	IHC&WB	Placenta
F8	IHC	Stomach cancer
FCGR3B	IHC	Spleen
FLI1	IHC&WB	Ewing sarcoma, Human tonsil
Fibronectin	IHC&WB	Human kidney, Human liver cancer
GATA3	IHC&IP&WB	Breast cancer, Human bladder cancer
GATA3 (phospho S308)	IHC&WB	Human breast cancer
GCDFP 15	IHC&WB	Salivary gland
GFAP	IHC&IP&WB&IF&sELISA	Cerebellum, Human glioma, Mouse brain, Mouse cerebellum, Mouse hippocampus
Glucose Transporter GLUT1	IHC&WB&IF	Human cervix cancer
Glutamine Synthetase	IHC&IP&WB	Human liver
Granzyme B	IHC&sELISA	Human t cell lymphoma, Spleen
Growth Hormone 1	IHC&sELISA	Human placenta, Placenta
HLA-DRA	IHC&WB&IF	Human lung, Tonsil
HSPA1A	IHC&IP&WB&IF&ICC	Human tonsil, Mouse testis, Testis
Histone H3	IHC&IP&WB&IF	Colon, Colorectal cancer, Mouse brain, Mouse colon
Histone H3 (acetyl K27)	IHC&WB&ICC	Human lung cancer
Histone H3 (acetyl K56)	IHC&WB&IF	Human colon
Histone H3 (acetyl K9)	IHC&IP&WB	Human breast carcinoma
Histone H3 (phospho S10)	IHC&WB	Mouse liver
Histone H3 (phospho S10/T11)	IHC&WB&ICC	Human lung cancer
Histone H3 (phospho S28)	IHC&WB&ICC	Human colon cancer
Histone H3 (phospho T3)	IHC&WB&ICC	Human tonsil
Histone H3 (tri methyl K27)	IHC&WB&ICC	Human lung cancer
Histone H3 (tri methyl K79)	IHC&IP&WB	Colon, Colorectal cancer
Histone H3.3	IHC&WB	Human lung cancer, Mouse stomach
Hsp70	IHC&WB	Human tonsil
Human IgA	IHC&WB&sELISA	Human tonsil
Human IgG4	IHC&WB&sELISA	Human tonsil, Tonsil

Protein target	mAb (various applications)	Tissue
Human IgM	IHC&WB&sELISA	Human tonsil, Tonsil
IDH1	IHC&IP&WB	Prostate
IGF2BP3	IHC&IP&WB&IF&ICC	Placenta
INSM1	IHC&WB	Pancreas
ITGB3	IHC&WB	Kidney
Insulin	IHC&IF	Mouse pancreas, Pancreas
KMT6/EZH2	IHC&WB&IF	Human tonsil
Ki67	IHC&WB&IF&sELISA	Brain tumor, Cervix squamous cell carcinoma, Colon cancer, Endometrium adenocarcinoma, Esophageal squamous cell carcinoma, Human lymph node (a), esophagus (b), lung cancer (c), rectum cancer (d), Human tonsil, Lung, Micropapillary thyroid cancer, Skin, Testis, Tonsil
LEF1	IHC&WB&ICC	Human spleen, Human tonsil
LGALS3	IHC&IP&WB&IF&ICC	Colon, Colon cancer, Human colon, Human colon cancer, Human thyroid
LHB	IHC	Pituitary tumor
LYZ	IHC&WB&ICC	Small intestine
Langerin	IHC	Human skin
Liver Arginase	IHC&WB&sELISA	Human liver, Liver
Lysozyme	IHC&WB	Human lung cancer, Mouse kidney
MBP	IHC&IP&WB&sELISA	Brain
MCM2	IHC&IP&WB&IF&ICC	Colon cancer, Human tonsil, Mouse colon, Ovarian cancer
MCM2 (phospho S27)	IHC&WB&ICC	Human tonsil
MCM2 (phospho S40)	IHC&WB	Human tonsil
MCM2 (phospho S41)	IHC&WB	Human tonsil
MDM2	IHC&IP&IP-MS	Testis
MDM2 (phospho S166)	IHC&IP&IP-MS&WB	Human colon cancer, Testis
MET	IHC&WB&ICC	Human lung cancer
MGMT	IHC&IP&WB&sELISA	Liver
MLH1	IHC&WB&ICC	Ovarian cancer
MPO	IHC&WB	Bone marrow, Human colon cancer
MSH2	IHC&IP&WB	Tonsil
MSH6	IHC&WB&ICC	Human tonsil
MT-CO2	IHC&WB&ICC	Human tonsil
MTCO2	IHC&WB	Human liver
Mammaglobin-A	IHC&WB	Breast
MelanA	IHC&IP&WB	Human melanoma, Malignant melanoma, Melanoma
MonoMethyl-Histone H3 (Lys18)	IHC&WB	Human liver
Mucin 5AC	IHC&WB	Stomach
Mucin-1	IHC&WB	Human ovarian cancer
Mucin-16	IHC&WB	Human ovary cancer
Mucin-2	IHC&WB	Colon

Protein target	mAb (various applications)	Tissue
Myoblast Determination Protein 1	IHC&WB	Rhabdosarcoma
Myoglobin	IHC&WB	Human skeletal muscle
NAPSIN-A	IHC&WB	Lung, Lung cancer
NCAM1	IHC&WB&sELISA	Adrenal gland, Brain, Human breast cancer, Ovarian cancer
NEFL	IHC&WB&IF&sELISA	Brain, Cerebral cortex, Mouse brain
NGFR	IHC&WB	Human glioma
NSE	IHC&WB&ICC	Human lung cancer
Nestin	IHC&IF	Human kidney, Kidney
NeuN	IHC&IP&WB&IF&ICC	Brain, Cerebellum, Mouse brain, Mouse cerebellum
Olig2	IHC&WB	Human mouse brain
P-Glycoprotein	IHC&IP&WB	Adrenal gland, Human liver
PAX2	IHC&WB	Clear cell renal cell carcinoma, Clear cell renal cell carcinoma tissue, Human colon
PAX5	IHC&WB&IF	Human tonsil
PCNA	IHC&IP&WB	Tonsil
PD1	IHC&WB&FC	Human tonsil, Tonsil
PECAM1	IHC&IP&WB	Kidney
PGP9.5	IHC&IP&WB&IF&ICC&sELISA	Brain, Human prostate cancer
PMS2	IHC&WB	Human tonsil, Testis
PSMA	IHC&WB	Human prostate carcinoma, Prostate
PTEN	IHC&IP&WB&IF	Human colon, Human colon carcinoma, Prostate cancer, Pten-deficient endometrium cancer
Parathyroid Hormone	IHC&WB	Parathyroid gland, Parathyroid gland tumor
Prostate Specific Antigen	IHC&IP&WB	Prostate
Rabbit Anti-Human IgG4	IHC&WB	Human stomach carcinoma
Rabbit Anti-Human IgM	IHC&WB	Human tonsil
Rb	IHC&WB&IF&ICC	Human lung cancer
Rb (phospho S608)	IHC&WB	Human tonsil
Rb (phospho S780)	IHC&WB	Human tonsil
Rb (phospho S807)	IHC&WB	Mouse spleen
Rb (phospho T252)	IHC&WB	Human tonsil
Rb (phospho T356)	IHC&WB	Human tonsil
S100 alpha9	IHC&WB	Tonsil
S100A1	IHC&WB	Brain, Human kidney
S100P	IHC&IP&WB&IF	Human bladder carcinoma, Placenta
SALL4	IHC&WB	Testis
SATB2	IHC&WB&IF	Human stomach cancer
SMARCB1	IHC&WB&ICC	Human tonsil
SOX10	IHC&WB	Salivary gland
SOX2	IHC&WB&IF	Human cervix carcinoma, Lung adenocarcinoma, Mouse lung
SPN	IHC	Tonsil
Somatostatin 28	IHC	Lung adenocarcinoma, Pancreas

Protein target	mAb (various applications)	Tissue
Somatostatin Receptor 2	IHC&WB	Pancreas
Stathmin 1	IHC&WB	Human colon, Human lung cancer
Stathmin-1	IHC&WB	Human colon
Survivin	IHC&WB&IF&ICC&sELISA	Human gastric carcinoma, Testis
Synaptophysin	IHC&WB&IF&ICC	Brain, Human kidney, Mouse brain
Syndecan-1	IHC&WB	Kidney
T Box Protein 21	IHC	Human spleen
T Cell Leukemia/Lymphoma Protein 1A	IHC&IP&WB	Tonsil
TACSTD2	IHC&IP&WB	Esophagus, Skin
THPO	IHC&WB&sELISA	Liver
TYMS	IHC&WB&ICC	Tonsil
Thyroglobulin	IHC&WB	Thyroid, Thyroid gland
Topoisomerase II alpha	IHC&WB	Human colon cancer, Testis
Transcription Factor E3	IHC&WB	Colon cancer, Human bladder
Transferrin Receptor 1	IHC&IP&WB&ICC	Human placenta
Trk A	IHC&WB	Human liver
Uroplakin 3A	IHC	Human bladder
VEGFA	IHC&WB&IF	Human kidney
VEGFD	IHC&WB&ICC&sELISA	Mouse heart muscle
Villin	IHC&IP&WB	Colon, Colon cancer, Colon carcinoma, Kidney, Stomach
Vimentin	IHC&IP&WB&ICC	Tonsil
Wilms Tumor Protein	IHC&IP&WB	Mouse kidney, Testis
alpha Smooth Muscle Actin	IHC&WB&IF	Endometrium smooth muscle, Human colon
alpha-1-Fetoprotein	IHC&IP&WB&sELISA	Liver cancer, Testis
beta Catenin	IHC&WB&ICC	Colon, Mouse colon
beta III Tubulin	IHC&IP&WB&IF&ICC	Cerebellum, Human cholangiocarcinoma, Human colon cancer
c-Met	IHC&WB&IF	Human stomach
c-Myc (phospho S62)	IHC&WB&ICC	Human lung carcinoma
p21	IHC&IP&WB&IF	Esophageal cancer, Esophagus squamous cell carcinoma, Human cholangiocarcinoma
p53	IHC&IP&WB&IF&ICC&sELISA	Human colon cancer, Skin
p53 (acetyl K370)	IHC&WB&ICC	Mouse skin, Skin
p53 (acetyl K382)	IHC&WB	Human breast carcinoma, Human colon carcinoma
p53 (mono methyl K382)	IHC	Human lung carcinoma
p53 (phospho S392)	IHC&WB	Human breast
p53 (phospho S6)	IHC&WB	Human tonsil
p57 Kip2	IHC&IP&WB&IF	Placenta, Rat kidney
p63	IHC&IP&WB&IF	Bladder tumor, Esophageal squamous cell carcinoma, Human breast, Lung tumor, Prostate, Tongue tumor, Urethral tumor

Empowering Protein Science



www.absea.bio

info@abseabio.com

Germany | USA | China