

# TARGETING THE E3OME



Ubiquitination-modulating proteins and corresponding validated antibodies

## Significance

Targeted Protein Degradation (TPD) technology offers new strategies for addressing "undruggable" targets, enhancing drug selectivity and efficacy, and overcoming resistance caused by protein mutations. However, the development of this technology faces several challenges:

Target Protein Detection

Finding More Effective E3 Ligases

Increasing Tissue Specificity

Mitigating Off-Target Effects

## Strengths

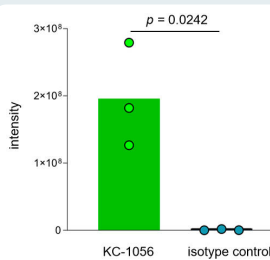
Leveraging our globally leading human protein library and state-of-the-art antibody development platform, Absea® has successfully developed more than 440 ubiquitination-modulating protein constructs, and corresponding IP and IHC verified antibodies for over 200 targets. We are actively advancing the "E3ome" program, to support TPD development by providing new opportunities to screen for suitable E3 ligases and characterize their substrate spectrum.

440+ Ubiquitination-modulating proteins

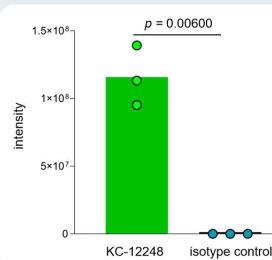
IP antibodies for over 90 targets

Exclusive Magnetic Bead-Conjugated E3 IP Antibodies

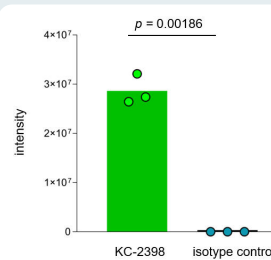
IP-MS Pullroven® Antibodies for Key E3 Ligases



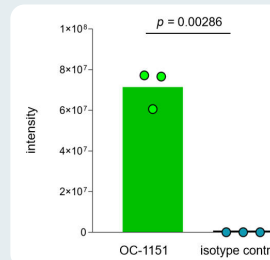
Cat # Target  
KC-1056 MDM2



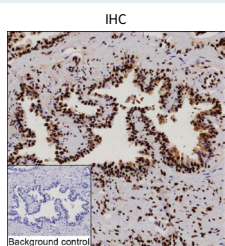
Cat # Target  
KC-12248 XIAP



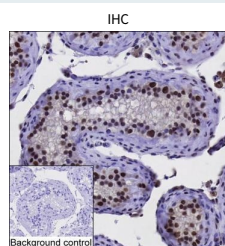
Cat # Target  
KC-2398 CIAP



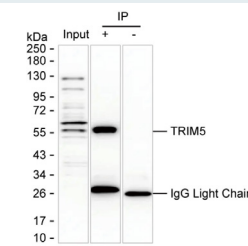
Cat # Target  
OC-1151 CIAP



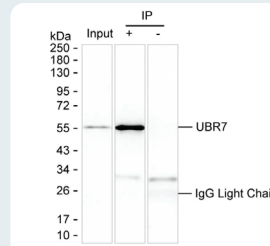
Cat # Target Tissue  
OC-647 TRIM28 Prostate



Cat # Target Tissue  
KC-1055 MDM2 Testis



Cat # Target  
KC-1437 TRIM5



Cat # Target  
KC-2182 UBR7

## E3ome product list

Protein target	mAb (various applications)	mAb conjugated magnetic beads (IP)	Annotation
ABRAXAS2	IP&IHC&WB		E3 Ligase
ADRM1	IHC&WB&ICC		Proteasomal Subunit
AHR	WB&ICC		E3 Ligase
AMFR	WB		ERAD
ANAPC7	WB		E3 Ligase
ANKIB1	IHC		E3 Ligase
APC6	IP&WB&sELISA		E3 Ligase
APG5L	IHC&WB&IF&ICC		E3 Ligase
APG5L/ATG5	IHC&WB		E3 Ligase
AREL1	IP&IHC&WB	✓	E3 Ligase
ASB15	sELISA		E3 Ligase
ASB3	WB		E3 Ligase
ATG12	WB		E3 Ligase
ATG16L1	WB		E3 Ligase
ATRX	IHC&WB		E3 Ligase
ATXN3	IHC&WB&sELISA		Deubiquitinase
Alpha B Crystallin	WB		E3 Ligase
Aryl Hhydrocarbon Receptor	WB		E3 Ligase
BABAM1	IHC&WB		E3 Ligase
BACH1	WB&sELISA		E3 Ligase
BAP1	WB		Deubiquitinase
BAP31	IHC&WB&ICC		ERAD
BARD1	WB		E3 Ligase
BAT3	WB&ICC		Ubiquitin Receptor
BCL6	IP&IHC&WB&IF&sELISA		E3 Ligase
BIN1	IP&IHC&WB&ICC		Ubiquitin Receptor
<b>BIRC2 (Pullroven®)</b>	IP&IP-MS&WB&ICC&sELISA	✓	E3 Ligase
BMI1	IP&IHC&WB&ICC		E3 Ligase
<b>BRAP (Pullroven®)</b>	IP&IP-MS&IHC&WB	✓	Deubiquitinase
BRCA1	IHC		E3 Ligase
BRCC3	WB		Deubiquitinase
BRMS1	WB		E3 Ligase
BRSK2	IHC&WB		Ubiquitin Receptor
C10orf90	WB		E3 Ligase
CALCOCO2	IP&WB		Ubiquitin Receptor
<b>CBL (Pullroven®)</b>	IP&IP-MS&IHC&WB&ICC&sELISA	✓	E3 Ligase
CBL (phospho S669)	WB		E3 Ligase
CBL (phospho Y774)	WB		E3 Ligase
CBLB	WB		E3 Ligase
CBLL2	IP&IHC&WB		E3 Ligase
CCDC98	WB		E3 Ligase
CDC23	WB		E3 Ligase

Protein target	mAb (various applications)	mAb conjugated magnetic beads (IP)	Annotation
<b>CDC27 (Pullroven®)</b>	IP&IP-MS&IHC&WB		E3 Ligase
CDC34	IP&IHC&WB&IF		E2 Conjugating Enzyme
CDCA3	WB		CRL Complex Component
CDT2	WB		E3 Ligase
CHD3	IP&WB&ICC		E3 Ligase
CHD4	IP&IHC&WB		E3 Ligase
COPS3	WB		COP9 Signalosome
COPS8	IHC&WB&ICC		COP9 Signalosome
CPSF1	IP&IHC&WB		E3 Ligase
<b>CRBN (Pullroven®)</b>	IP-MS		CRL Complex Component
CRYAB	IHC&WB&ICC		E3 Ligase
CSN4	WB		COP9 Signalosome
CUL3	WB		E3 Ligase
CUL4A	IHC&WB		E3 Ligase
CUL5	IP&IHC&WB&sELISA	✓	E3 Ligase
CUL9	IP&IHC&WB	✓	E3 Ligase
Clusterin	IP&IHC&WB&sELISA		E3 Ligase
Cullin 3	WB		E3 Ligase
Cullin 4A	WB		E3 Ligase
Cullin-1	IP&WB&ICC		E3 Ligase
Cullin-2	WB		E3 Ligase
DAXX	IHC&WB&ICC		E3 Ligase
DCUN1D2	IHC&WB		CRL Complex Component
DDB1	IP&IHC&WB&ICC		E3 Ligase
DDB2	WB		E3 Ligase
DNAI2	WB		E3 Ligase
DPF2	IHC&WB		E3 Ligase
DTL	IHC&WB		E3 Ligase
DTX2	IP&IHC&WB	✓	E3 Ligase
<b>DTX3L (Pullroven®)</b>	IP&IP-MS&IHC&WB&sELISA	✓	E3 Ligase
DZIP3	IHC		E3 Ligase
E1 Ubiquitin Activating Enzyme 1/UBA1	WB		E1 Ligase
E4F1	IHC		E3 Ligase
<b>EDD (Pullroven®)</b>	IP-MS&IHC&WB		E3 Ligase
EED	IP&IHC&WB		E3 Ligase
EGR2	WB		E3 Ligase
EML4	WB		E3 Ligase
EP300	IHC		E3 Ligase
EPN1	WB		Ubiquitin Receptor
EPN3	WB		Ubiquitin Receptor
ERCC8	IP&WB		E3 Ligase
Emi1	WB		CRL Complex Component
Erlin-2	WB		ERAD

Protein target	mAb (various applications)	mAb conjugated magnetic beads (IP)	Annotation
FAF1	IHC&sELISA		Ubiquitin Receptor
FBXL5	IHC		CRL Complex Component
FBXO32	WB		E3 Ligase
FBXO34	IHC		E3 Ligase
FBXW11	IP&IHC&WB		E3 Ligase
FBXW7	IHC		E3 Ligase
FHL1	IHC&WB		E3 Ligase
GGA1	WB		Ubiquitin Receptor
GNB2	IHC&WB		E3 Ligase
GNB3	WB		E3 Ligase
HDAC6	IP&IHC&WB		Deubiquitinase
HECTD2	IP&WB		E3 Ligase
HECTD3	WB		E3 Ligase
HECTD4	WB		E3 Ligase
HECW1	IP&IHC&WB		E3 Ligase
HECW2	IP&IHC&WB		E3 Ligase
HERC4	WB		E3 Ligase
<b>HERC5 (Pullroven®)</b>	IP&IP-MS&IHC&WB	√	E3 Ligase
HLTF	IP&IHC&WB&ICC		E3 Ligase
HSPC150	WB		E2 Conjugating Enzyme
IKBKG	IP&IHC&WB&ICC&sELISA		Ubiquitin Receptor
IKK gamma	IHC&WB		Ubiquitin Receptor
ITCH	WB		E3 Ligase
JAB1	WB		Deubiquitinase
K48 peptide/K63 peptide/ K63GG peptide/Ubiquitin	WB		Ubiquitin
KAP1	IP&IHC&WB&ICC&sELISA		E3 Ligase
KAP1 (phospho S824)	WB		E3 Ligase
KAT2B	WB		E3 Ligase
KCNA1	WB		E3 Ligase
KCTD21	WB		E3 Ligase
KCTD3	WB		CRL Complex Component
KCTD9	WB&ICC		E3 Ligase
KDM2A	WB		E3 Ligase
KEAP1	IP&IHC&WB		E3 Ligase
KLHL41	IHC&WB		CRL Complex Component
Kaiso	WB		E3 Ligase
LATS1	IP&WB		Ubiquitin Receptor
LGALS3BP	WB		E3 Ligase
LIS1	WB		E3 Ligase
LNX2	IP&WB		E3 Ligase
<b>LONRF2 (Pullroven®)</b>	IP&IP-MS&IHC&WB	√	E3 Ligase
LONRF3	IHC		E3 Ligase
MAEA	IHC&WB		E3 Ligase

Protein target	mAb (various applications)	mAb conjugated magnetic beads (IP)	Annotation
MAGE1	WB		E3 Ligase
<b>MAGEA3 (Pullroven®)</b>	IP&IP-MS&IHC&WB	√	E3 Ligase
MAGEC2	IHC&WB		E3 Ligase
MAGED1	WB&sELISA		E3 Ligase
MALT1	WB		Deubiquitinase
MAP3K1	IHC&WB		E3 Ligase
MARCHF7	WB		E3 Ligase
MARK2	WB		Ubiquitin Receptor
MARK3	WB		Ubiquitin Receptor
<b>MDM2 (Pullroven®)</b>	IP&IP-MS&IHC	√	E3 Ligase
<b>MDM2 (phospho S166) (Pullroven®)</b>	IP&IP-MS&IHC&WB		E3 Ligase
MDM4	IP&WB	√	E3 Ligase
MEX3A	IP&IHC&WB		E3 Ligase
MEX3C	IP&IHC&WB		E3 Ligase
MEX3D	IP&IHC&WB		E3 Ligase
MGRN1	IP&IHC&WB		E3 Ligase
MIB1	WB		E3 Ligase
MYLIP	WB		E3 Ligase
MYO6	IP&IHC&WB		Ubiquitin Receptor
NACC1	IHC		E3 Ligase
NAE1	WB		Neddylation
NBR1	IHC		Ubiquitin Receptor
<b>NEDD4 (Pullroven®)</b>	IP&IP-MS&IHC&WB	√	E3 Ligase
NEDD4-2	WB		E3 Ligase
NEDD8	IHC&WB&ICC		Neddylation
<b>NFX1 (Pullroven®)</b>	IP-MS&WB		E3 Ligase
NSD3	WB		E3 Ligase
NSMCE1	IP&IHC&WB		E3 Ligase
NUB1	IHC&WB		Ubiquitin Receptor
OBI1	IHC		E3 Ligase
OPTN	IHC&WB		Ubiquitin Receptor
OS9	WB		ERAD
OTUB1	WB		Deubiquitinase
P4HB	IHC&WB		ERAD
PAFAH1B1	WB		E3 Ligase
PDZRN4	IHC&WB		E3 Ligase
PELI1	WB		E3 Ligase
PELI3	IHC&WB		E3 Ligase
PGP9.5	IP&IHC&WB&IF&ICC&sELISA	√	Deubiquitinase
PIAS1	WB		E3 Ligase
PIAS2	WB		SUMO E3 Ligase
PJA1	IHC&WB		E3 Ligase
PJA2	IHC&WB		E3 Ligase

Protein target	mAb (various applications)	mAb conjugated magnetic beads (IP)	Annotation
<b>PML (Pullroven®)</b>	IP&IP-MS&IHC&WB	✓	E3 Ligase
PML (phospho S518)	IHC&WB		E3 Ligase
POMP	IHC&WB		Proteasomal Subunit
PPAR gamma	WB		E3 Ligase
<b>PPIL2 (Pullroven®)</b>	IP&IP-MS&IHC&WB	✓	E3 Ligase
PRAME	IHC&WB		E3 Ligase
PRPF19	IHC&WB		E3 Ligase
PRPF8	WB		Deubiquitinase
PSMA1	IHC&WB&sELISA		Proteasomal Subunit
PSMA2	IHC&WB&ICC		Proteasomal Subunit
PSMA3	WB		Proteasomal Subunit
PSMA4	IHC&WB		Proteasomal Subunit
PSMA6	IHC&WB&ICC		Proteasomal Subunit
PSMB10	IHC&WB		Proteasomal Subunit
PSMB6	IHC&WB		Proteasomal Subunit
PSMB7	IHC&WB		Proteasomal Subunit
PSMB8	IHC&WB&IF&ICC		Proteasomal Subunit
PSMC5	WB&ICC		Proteasomal Subunit
PSMD1	IP&IHC&WB		Proteasomal Subunit
PSMD14	IHC&WB&ICC		Deubiquitinase (proteasome-associated)
PSMD4	WB		Proteasomal Subunit
PSMD7	IHC&WB		Proteasomal Subunit
PSMD9	WB		Proteasomal Subunit
PSME1	IP&IHC&WB&sELISA		Proteasomal Subunit
PSME2	IHC&sELISA		Proteasomal Subunit
PWP1	WB		E3 Ligase
Parkin	WB		ERAD
Phospholipase A2 Activator Protein	IHC&WB&ICC		Ubiquitin Receptor
Pirh2	WB		E3 Ligase
Proteasome beta 9	IHC&WB		Proteasomal Subunit
RAD23B	IHC&WB&ICC		Proteasomal Subunit
RAG1	IHC		E3 Ligase
RANBP2	IHC		E3 Ligase
RAP80	WB		Ubiquitin Receptor
RBBP4	IHC&WB&ICC		E3 Ligase
RBBP5	IHC&WB&IF		E3 Ligase
RBX1	IP&IHC&WB&ICC		E3 Ligase
RFPL2	WB		E3 Ligase
RICTOR	IHC&WB&sELISA		CRL Complex Component
RING1	IHC&WB		E3 Ligase
RING2 / RING1B / RNF2	WB		E3 Ligase
<b>RMND5A (Pullroven®)</b>	IP&IP-MS&IHC&WB	✓	E3 Ligase

Protein target	mAb (various applications)	mAb conjugated magnetic beads (IP)	Annotation
RMND5B	IHC&WB		E3 Ligase
RNF113A	IP&IHC&WB		E3 Ligase
RNF113B	IP&IHC&WB	✓	E3 Ligase
RNF115	IHC&WB&sELISA		E3 Ligase
RNF123	IHC&WB		E3 Ligase
RNF128	WB		E3 Ligase
RNF13	WB		E3 Ligase
RNF133	IHC		E3 Ligase
RNF135	IHC&WB		E3 Ligase
RNF138	IHC&WB		E3 Ligase
RNF139	WB		E3 Ligase
RNF14	IHC&WB		E3 Ligase
RNF146	IP&IHC&WB	✓	E3 Ligase
RNF150	IHC&WB		E3 Ligase
RNF169	IHC		E3 Ligase
RNF19A	IHC		E3 Ligase
RNF19B	IP&IHC&WB		E3 Ligase
RNF2	IHC&WB		E3 Ligase
RNF20	WB		E3 Ligase
RNF207	IHC		E3 Ligase
RNF212B	IHC		E3 Ligase
RNF216	IHC&WB		E3 Ligase
RNF217	IHC		E3 Ligase
RNF220	IHC		E3 Ligase
RNF31	IP&IHC&WB&sELISA	✓	E3 Ligase
RNF32	IP&WB	✓	E3 Ligase
RNF40	WB		E3 Ligase
RNF43	WB		E3 Ligase
RNF6	IHC&WB		E3 Ligase
RNF7	WB		E3 Ligase
RNF8	IP&WB		E3 Ligase
Rad18	IHC&WB		E3 Ligase
RanBP9	WB		E3 Ligase
Raptor	WB		E3 Ligase
SCAF11	IHC		E3 Ligase
SEC61A	IHC&WB&ICC		ERAD
SEN8	IHC		Deubiquitinase
SF3B3	WB&ICC		E3 Ligase
SH3KBP1	WB		Ubiquitin Receptor
SH3RF1	IP&WB	✓	E3 Ligase
<b>SHPRH (Pullroven®)</b>	IP&IP-MS&IHC&WB	✓	E3 Ligase
SKP1	WB&ICC		CRL Complex Component
SKP2	IP&IHC&WB&ICC		E3 Ligase
SMURF1	WB		E3 Ligase

Protein target	mAb (various applications)	mAb conjugated magnetic beads (IP)	Annotation
SMURF2	WB		E3 Ligase
SOCS2	IP&WB		E3 Ligase
SPOP	WB		E3 Ligase
SQSTM1	IP&IHC&WB&ICC		Ubiquitin Receptor
SQSTM1/p62	WB&IF&ICC		Ubiquitin Receptor
STAMBP	IP&IHC&WB&sELISA		Deubiquitinase
STRN4	WB		E3 Ligase
STUB1	IP&IHC&WB&ICC		ERAD
TAB3	WB		Ubiquitin Receptor
TAF5L	IHC&WB		E3 Ligase
TAX1BP1	IHC&WB		Ubiquitin Receptor
TBL1X	IP&IHC&WB&ICC		CRL Complex Component
TBL1XR1	IHC&WB&ICC		CRL Complex Component
TCEB2	WB		E3 Ligase
THOC6	IHC&WB		E3 Ligase
TLE1	WB		E3 Ligase
TLE2	WB		E3 Ligase
TNFAIP3	IP&IHC&WB&IF&ICC		Deubiquitinase
TOR1AIP2	IHC		E3 Ligase
TRAF1	IP&IHC&WB		E3 Ligase
TRAF2	WB		E3 Ligase
TRAF3	IP&IHC&WB&sELISA	✓	E3 Ligase
TRAF3IP2	WB		E3 Ligase
TRAF4	WB		E3 Ligase
TRAF6	IP&IHC&WB		E3 Ligase
TRAIP	IP&IHC&WB		E3 Ligase
TRIM10	IHC&WB		E3 Ligase
TRIM17	IHC&WB		E3 Ligase
TRIM2	IHC		E3 Ligase
TRIM21	IHC&WB&sELISA		E3 Ligase
TRIM23	WB		E3 Ligase
TRIM24	WB		E3 Ligase
<b>TRIM25 (Pullroven®)</b>	IP&IP-MS&IHC&WB&ICC	✓	E3 Ligase
<b>TRIM31 (Pullroven®)</b>	IP&IP-MS&IHC&WB&sELISA	✓	E3 Ligase
TRIM33	IHC&WB		E3 Ligase
TRIM34	IP&IHC&WB	✓	E3 Ligase
TRIM35	IHC		E3 Ligase
TRIM36	IHC&WB		E3 Ligase
TRIM38	IP&IHC&WB		E3 Ligase
TRIM40	IHC		E3 Ligase
TRIM41	IHC&WB		E3 Ligase
TRIM43B	IP&WB	✓	E3 Ligase
TRIM45	IHC&WB		E3 Ligase
<b>TRIM47 (Pullroven®)</b>	IP&IP-MS&IHC&WB	✓	E3 Ligase

Protein target	mAb (various applications)	mAb conjugated magnetic beads (IP)	Annotation
TRIM49	IP&IHC&WB	✓	E3 Ligase
<b>TRIM5 (Pullroven®)</b>	IP&IP-MS&IHC&WB&sELISA	✓	E3 Ligase
TRIM54	IP&WB	✓	E3 Ligase
TRIM55	IHC&WB		E3 Ligase
TRIM56	IP&IHC&WB&ICC		E3 Ligase
TRIM59	IP&WB	✓	E3 Ligase
TRIM63	IHC&WB		E3 Ligase
TRIM65	IP&WB	✓	E3 Ligase
TRIM7	IHC&WB		E3 Ligase
TRIM72	IP&IHC&WB	✓	E3 Ligase
TRIM73	IHC		E3 Ligase
TRIM8	IHC		E3 Ligase
TRIML1	IHC		E3 Ligase
TRO	IHC&WB		E3 Ligase
TSM	WB		Ubiquitin Receptor
TSG101	IHC&WB&ICC		Ubiquitin Receptor
TTC3	IHC		E3 Ligase
Tbp7	WB		Proteasomal Subunit
Thioredoxin Interacting Protein	WB		E3 Ligase
UBA3	WB		Neddylation
UBA52	WB&ICC		Ubiquitin
UBASH3A	WB		Ubiquitin Receptor
UBE2C	IHC&WB&ICC		E2 Conjugating Enzyme
UBE2D1	IHC&WB		E2 Conjugating Enzyme
UBE2D3	WB		E2 Conjugating Enzyme
UBE2F	WB		Neddylation
UBE2L3	WB&ICC		E2 Conjugating Enzyme
UBE2M	IP&IHC&WB		Neddylation
UBE2Z	IP&IHC&WB		E2 Conjugating Enzyme
<b>UBE3A (Pullroven®)</b>	IP&IP-MS&IHC&WB&ICC	✓	E3 Ligase
UBE4A	IP&IHC&WB		ERAD
UBE4B	IP&IHC&WB&ICC		ERAD
UBR1	WB		E3 Ligase
UBR2	WB		E3 Ligase
UBR7	IP&IHC&WB	✓	E3 Ligase
UCHL3	WB		Deubiquitinase
UCHL5	IP&IHC&WB&ICC&sELISA		Deubiquitinase
UFD1	WB		p97/VCP Complex
UHRF1	IP&WB		E3 Ligase
<b>UHRF2 (Pullroven®)</b>	IP&IP-MS&IHC&WB	✓	E3 Ligase
UIMC1	IHC&WB&ICC		Ubiquitin Receptor
USP10	IHC&WB&ICC		Deubiquitinase
USP11	WB		Deubiquitinase

Protein target	mAb (various applications)	mAb conjugated magnetic beads (IP)	Annotation
USP13	WB&ICC		Deubiquitinase
USP14	WB		Deubiquitinase
USP20	IHC		Deubiquitinase
USP22	WB		Deubiquitinase
USP24	WB		Deubiquitinase
USP25	WB		Deubiquitinase
USP28	WB		Deubiquitinase
USP39	WB		Deubiquitinase
USP7	IHC&WB		Deubiquitinase
USP8	WB		Deubiquitinase
USP9X	WB		Deubiquitinase
Ubiquitin	IHC&WB&IF&ICC		Ubiquitin
Ubiquitin (linkage-specific K48)	IHC&WB		Ubiquitin
Ubiquitin (linkage-specific K63)	IHC&WB&ICC		Ubiquitin
Ubiquitin 60S Ribosomal Protein L40	WB&ICC		Ubiquitin
Ubiquitin Conjugating Enzyme E2 A/B	WB		E2 Conjugating Enzyme
Ubiquitin Conjugating Enzyme E2 N	WB&ICC		E2 Conjugating Enzyme
Ubiquitin K48	IHC&WB&IF		Ubiquitin
Ubiquitin K63	IHC&WB		Ubiquitin
VCP	IHC&WB&IF&ICC		ERAD
VHL	IP		E3 Ligase
VPS11	WB		E3 Ligase
VPS18	WB		E3 Ligase
VPS41	IP&WB		E3 Ligase
VPS8	WB		E3 Ligase
WDR1	IHC&WB&ICC		E3 Ligase
WDR26	IHC&WB		E3 Ligase
WDR4	WB		E3 Ligase
WDR47	IP&IHC&WB		E3 Ligase
WDR5	WB		E3 Ligase
WDR59	IHC&WB		E3 Ligase
WDR68	WB		E3 Ligase
WDR70	IHC&WB		E3 Ligase
WDR77	WB&ICC		E3 Ligase
WSTF	WB		E3 Ligase
WWP1	IP&WB&sELISA		E3 Ligase
<b>WWP2 (Pullroven®)</b>	IP&IP-MS&WB&sELISA	✓	E3 Ligase
<b>XIAP (Pullroven®)</b>	IP&IP-MS&IHC&WB&sELISA	✓	E3 Ligase
YOD1	WB		Deubiquitinase

Protein target	mAb (various applications)	mAb conjugated magnetic beads (IP)	Annotation
ZBTB16	WB		E3 Ligase
ZBTB17	IHC&WB&sELISA		E3 Ligase
ZBTB49	IHC		E3 Ligase
ZBTB7A	IHC&WB&ICC		E3 Ligase
ZC3HC1	IHC&WB&sELISA		CRL Complex Component
ZMIZ1	WB		E3 Ligase
<b>ZNF598 (Pullroven®)</b>	IP&IP-MS&WB		E3 Ligase
ZNRF2	WB		E3 Ligase
alpha COP I	WB		E3 Ligase
clAP1	WB		E3 Ligase
clAP2	IP&WB		E3 Ligase
hHR23A	WB		Proteasomal Subunit

# Empowering Protein Science



[www.absea.bio](http://www.absea.bio)

[info@abseabio.com](mailto:info@abseabio.com)

Germany | USA | China