

# CYTOKINES



Introducing our product line of cytokines,  
and cytokine-targeting monoclonal antibodies (mAbs)

## Significance

Cytokines enable cell-to-cell communication and play a crucial role in regulating and executing immune responses. By influencing the behavior of immune cells, cytokines help maintain immune balance and protect against infections and diseases. Key types of cytokines include:

Interleukins (IL): IL-1, IL-2, IL-6, IL-8, IL-10, etc.

Interferons (IFN): IFN-alpha, IFN-beta, IFN-gamma

Tumor Necrosis Factors (TNF): TNF-alpha, TNF-beta

Colony Stimulating Factors (CSF), Growth Factors, Chemokines

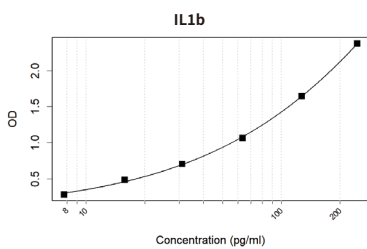
Measuring cytokine levels helps assess immune function, evaluate treatment outcomes, and perform disease diagnosis, prognosis and progression monitoring.

## Features

Wide Range of  
Soluble Proteins

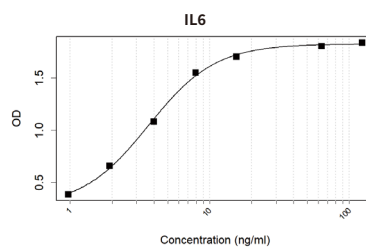
Broadly validated  
cytokine-targeting mAbs

Serum Sample Validation



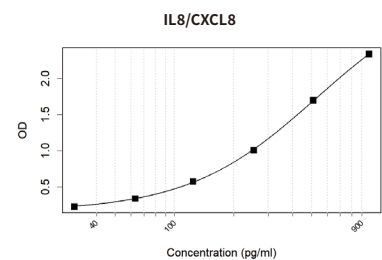
Sandwich ELISA

KC-025 - KC-408



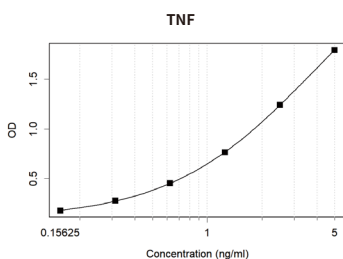
Sandwich ELISA

KC-364 - KC-367



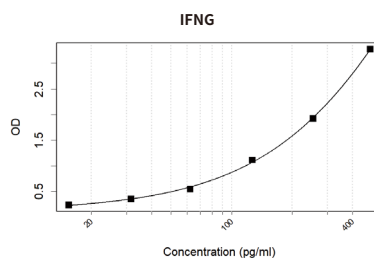
Sandwich ELISA

KC-405 - KC-406



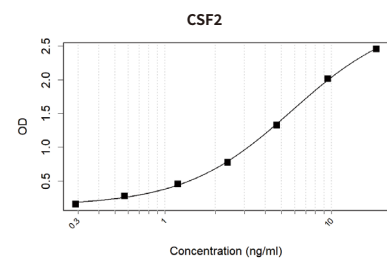
Sandwich ELISA

KC-064 - KC-412



Sandwich ELISA

KC-041 - KC-047



Sandwich ELISA

KC-051 - KC-050

## Monoclonal Antibodies

Catalog No.	Products	Clone No.	WB	IHC	IP	ELISA	IF	ICC	FC
KC-30488	4-1BBL	K2K014_15A10	√						
KC-30785	4-1BBL	K2K014_13D4	√						
RC-16732	4-1BBL	K01_4R58	√						
RC-4320	ADIPOQ	K01_1M40	√						
RC-5317	AIMP1	K01_1Q76	√						
KC-146	AMF	K94005_4A4	√		√				
KC-142	AMF	K94005_19C2	√		√				
KC-122	AMF	K94005_4F7	√	√	√				
KC-22942	APRIL	K29071_20E7				√			
KC-22085	APRIL	K29071_11G6	√			√			
KC-22124	APRIL	K29071_15D3				√			
KC-22154	APRIL	K29071_19A2				√			
KC-3467	AREG	K40022_2B2				√			
KC-3468	AREG	K1E006_12F5				√			
KC-3625	AREG	K1E006_16B11				√			
KC-514	AREG	K1E006_10A9	√						
KC-3685	AREG	K40022_14A10				√			
RC-6828	Angiotensinogen	K01_3J80	√						
RC-15467	Angiotensinogen	K01_3S78	√						
RC-17000	BDNF	K01_4U29	√	√			√		
RC-16412	BMP11	K01_4N34	√						
KC-3340	BMP15	K29061_10A1	√						
RC-16055	BMP15	K01_4J72	√						
RC-4073	BMP2	K01_1N59	√						
RC-15944	BMP6	K01_3Y60	√						
RC-15221	BMP7	K01_3Q30	√						
OC-592	Biglycan		√						
RC-15134	Biglycan	K01_3P42	√						
KC-22092	Biglycan	K8U022_3G7							√
KC-2645	CCL1	K29057_13G10				√			
KC-3577	CCL1	K29057_9F7				√			
KC-2651	CCL1	K29057_8F1	√			√			
KC-3604	CCL1	K29057_3A7				√			
KC-2691	CCL1	K29057_11B7				√			
KC-2648	CCL1	K29057_12B5				√			
KC-1445	CCL15	K70043_3C5		√					
KC-1446	CCL15	K70043_4C5	√						
KC-1551	CCL16	K70042_2E9	√						
KC-1553	CCL16	K70042_8D10	√						
KC-1552	CCL16	K70042_2F2	√						

Catalog No.	Products	Clone No.	WB	IHC	IP	ELISA	IF	ICC	FC
KC-021	CCL2	KT221	√			√			
KC-413	CCL2	K06288_16E11				√			
KC-480	CCL2	K06288_4G5		√		√			
KC-7251	CCL3	K24010_6B12				√			
KC-7250	CCL3	K24010_10B10				√			
KC-7252	CCL3	K24010_4B2				√			
KC-7253	CCL3	K24010_10F6				√			
KC-1573	CCL7	K92004_1D2	√						
KC-12038	CCL7	K92004_9D9	√						
KC-12040	CCL7	K92004_13H1				√			
KC-2841	CCL8	K52037_16E3				√			
KC-1858	CCL8	K52037_8B9	√			√			
KC-1859	CCL8	K52037_18D1	√			√			
KC-1990	CCL8	K52037_11B4		√		√			
KC-7956	CCL8	K52037_6B5				√			
KC-2842	CCL8	K52037_3A8				√			
KC-7328	CD70	K52066_13G4				√			
KC-7324	CD70	K52066_4F1				√			
KC-7326	CD70	K52066_18H10				√			
KC-7325	CD70	K52066_15G11				√			√
RC-4739	CSHL1	K01_1P85	√						
KC-10140	CX3CL1	K29043_20F6	√						
KC-7875	CXCL11	K1E046_19C9				√			
KC-1549	CXCL11	K52037_8D1	√			√			
KC-1846	CXCL11	K52037_9H9	√			√			
KC-2463	CXCL13	KAA306_6G3		√					
OC-878	CXCL14		√						
KC-4010	CXCL17	K52038_11D7				√			
KC-2116	CXCL17	K52038_2E4	√	√		√			
KC-2117	CXCL17	K52038_14E12		√		√			
KC-2057	CXCL17	K52038_15H8		√		√			
KC-4009	CXCL17	K52038_19B9				√			
KC-46525	CXCL2	K1H056_5G5	√						
KC-46516	CXCL2	K1H056_11F6	√						
KC-46410	CXCL2	K1H056_2F7	√						
RC-15033	CXCL5	K01_3N40	√						
KC-3110	CXCL6	K29056_17G12				√			
KC-2840	CXCL6	K29056_7D12	√			√			
KC-3112	CXCL6	K29056_11B10	√			√			
KC-3111	CXCL6	K29044_6G4				√			
KC-27085	EG-VEGF	K94067_14G3	√						
KC-27082	EG-VEGF	K94067_1E10	√						
KC-27075	EG-VEGF	K94067_2A4	√						

Catalog No.	Products	Clone No.	WB	IHC	IP	ELISA	IF	ICC	FC
KC-068	EGF	KT57	√			√			
KC-2525	EGF	K70049_5H1		√					
RC-15570	EGF	K01_3T82	√						
RC-3962	Estrogen Inducible	K03_1K15		√					
RC-15155	Estrogen Inducible	K01_3P63	√						
RC-5043	Extracellular Matrix	K01_1Q96	√	√				√	
RN-11124	Extracellular Matrix	K56060_5A6	√	√					
RN-14469	Extracellular Matrix	K56060_14E8		√					
OC-1461	FAM3B		√						
OC-088	FAM3B		√						
OC-089	FAM3B		√						
KC-29636	FAM3C	K56057_16H1	√						
KC-29584	FAM3C	K56057_10A11	√						
KC-29446	FAM3C	K56057_10B7	√						
KC-1648	FAM3D	K29027_7G7	√		√				
KC-1643	FAM3D	K29027_6G10	√		√				
KC-1647	FAM3D	K29027_2D4	√		√				
RC-4946	FGF1	K01_1R14	√	√					
KC-2039	FGF1	KT115		√					
RC-15703	FGF1	K01_3W17	√						
KC-2266	FGF12	K94041_8C12	√		√				
KC-2654	FGF16	K52035_6E10	√						
KC-7124	FGF18	KAA264_3D4		√					
KC-071	FGF2	KT49	√	√	√				
KC-070	FGF2	KT1		√	√	√			
RC-6942	FGF2	K01_3K95	√						
KC-8422	FGF23	K16300_2E8	√						
KC-7964	FGF5	K06316_12H8				√			
KC-1176	FGF5	K06316_6C4	√	√		√			
KC-1569	FGF5	K1E008_4E10	√			√			
KC-8243	FGF5	K1E008_3G12				√			
KC-062	G-CSF	KT27	√			√			
KC-061	G-CSF	KT26	√			√			
KC-7977	G-CSF	K56025_17F2				√			
KC-7976	G-CSF	K56025_18D1				√			
KC-7975	G-CSF	K56025_10A7				√			
KC-27125	GDF15	K06376_1H7				√			
KC-27144	GDF15	K06376_7C6				√			
KC-27191	GDF15	K06376_15H5	√	√		√			
RC-15921	GDF3	K01_3Y37	√						
KC-991	GKN1	K40038_1F1		√					
KC-980	GKN1	K40038_2E5	√						
KC-1018	GKN1	K40038_11H2	√	√					

Catalog No.	Products	Clone No.	WB	IHC	IP	ELISA	IF	ICC	FC
KC-051	GM-CSF	K16248_2B8				√			
KC-056	GM-CSF	K16248_5D8		√		√			
KC-059	GM-CSF	K16248_10E2				√			
KC-049	GM-CSF	KT226				√			
KC-048	GM-CSF	KT35	√			√			
KC-053	GM-CSF	K16248_4E8				√			
KC-057	GM-CSF	K16248_4E2				√			
KC-3795	GREM1	KAA307_10E2	√						
RC-6874	Granulin	K01_3K27	√	√					
RC-6648	Granulin	K01_2X91	√	√					
KC-25775	Granulin	KAA273_10F8	√						
KC-189	Growth Hormone 1	KT34				√			
KC-302	Growth Hormone 1	K01013_6G1		√					
KC-188	Growth Hormone 1	KT19		√		√			
RC-6351	HMGB1	K01_2T88	√	√					
RC-6928	HMGB1	K01_3K81	√	√					
RC-17014	HMGB1	K01_4U43	√	√			√		
RC-16570	HTRA1	K01_4P93	√						
KC-643	IFNA1	K92003_15B9				√			
KC-642	IFNA1	K92007_1C3				√			
KC-582	IFNA1	K92003_1D8	√			√			
KC-2879	IFNA2	K29019_16A5				√			
KC-645	IFNA2	K29019_13B11	√			√			
KC-015	IFNA2	K29019_5A11	√						
KC-646	IFNA2	K29019_9C6				√			
KC-014	IFNA2	K29019_20D10	√						
KC-644	IFNA2	K40013_2H12				√			
KC-040	IFNA2	KT107	√						
KC-039	IFNA2	KT5	√						
RC-3897	IFNA21	K03_1K43		√					
KC-17239	IFNL2	K16299_1E12	√						
KC-8412	IFNL2	K16299_5F12	√						
KC-14623	IFNL3	K40054_20C12	√						
KC-16429	IFNL3	K40054_10H8	√						
KC-16425	IFNL3	K40054_1F12	√						
KC-43238	IFNL4	KBL015_6H1	√						
KC-43033	IFNL4	KBL015_9A8	√						
KC-42981	IFNL4	KBL015_10B8	√						
KC-2377	IFNW1	K16289_9A9	√						
KC-2206	IFNW1	K16289_11E9	√						
KC-2502	IGF1	K56011_5A3		√					
KC-13290	IGF1	K56011_5D4		√					
KC-1331	IGF1	K56011_7B11		√					

Catalog No.	Products	Clone No.	WB	IHC	IP	ELISA	IF	ICC	FC
RC-15507	IGF2	K01_3T19	√						
KC-825	IL-1 alpha	K24011_15A2				√			
KC-826	IL-1 alpha	K24011_17E8				√			
KC-828	IL-1 alpha	K24011_18D3		√	√	√			
KC-827	IL-1 alpha	K24011_17E10				√			
KC-025	IL-1 beta	K24005_5E11	√			√			
KC-422	IL-1 beta	K24005_5A2	√						
KC-408	IL-1 beta	KT216	√			√			
KC-308	IL-1 beta	K24005_2A5	√			√			
KC-024	IL-1 beta	KT217	√			√			
KC-023	IL-1 beta	K24005_10B3	√			√			
KC-026	IL-1 beta	K24005_1G1	√			√			
KC-029	IL-1 beta	K24005_8D10	√			√			
KC-8260	IL-2 Receptor alpha	KAA311_15H4							√
RC-3942	IL-2 Receptor alpha	K03_1J49	√						√
KC-4423	IL-2 Receptor alpha	K01_1J12		√					
RC-15713	IL-23 alpha	K01_3W27	√						
KC-533	IL10	K24004_4F1	√						
KC-1637	IL10	K24004_2A1		√					
KC-534	IL10	K24004_4G9	√						
KC-022	IL11	KT62	√			√			
KC-426	IL11	KT8	√			√			
KC-303	IL11	K03001_2G3	√			√			
KC-306	IL11	K03001_10B11	√			√			
KC-467	IL12A	K92010_3D8	√						
KC-466	IL12A	K92010_2E1	√						
KC-471	IL12A	K92010_16E1	√			√			
KC-1118	IL12B	K1E007_10B6				√			
KC-1570	IL12B	K1E007_5H5	√						
RC-16210	IL12B	K01_4L29	√						
RC-16580	IL13	K01_4Q04	√						
KC-3626	IL15	K94008_7G2				√			
KC-833	IL15	K94008_2A3	√			√			
KC-554	IL15	K94008_10D2	√						
KC-831	IL15	K94008_7D11	√			√			
KC-3627	IL15	K94008_6H6	√						
KC-3680	IL15	K94008_5H9				√			
KC-830	IL15	K94008_1A6				√			
KC-3541	IL15	K94008_4E8				√			
KC-1485	IL16	K1E006_3F11	√	√		√			
KC-1782	IL16	K1E006_6H10	√	√		√			
KC-2888	IL16	K1E006_1G11				√			
KC-2889	IL16	K1E006_12H10				√			

Catalog No.	Products	Clone No.	WB	IHC	IP	ELISA	IF	ICC	FC
KC-3000	IL17A	K1E007_1C3	√			√			
KC-2993	IL17A	K1E007_7E4				√			
KC-1841	IL17A	K1E007_7H5	√			√			
KC-493	IL17A	KAA340_4B1	√						
KC-3009	IL17A	K1E007_1A9				√			
KC-9549	IL17A	K1E007_2B5				√			
KC-9561	IL17A	K1E007_10F3				√			
RC-3853	IL17F	K03_1K04		√					
KC-1664	IL18	K94016_1C3		√					
KC-678	IL18	K94016_11A2	√	√	√				
KC-680	IL18	K94016_16G4	√	√	√				
KC-832	IL18	K94016_20H1	√						
KC-679	IL18	K94016_13H1	√		√				
RC-16565	IL18BP	K01_4P88	√						
RC-5046	IL1RN	K01_1S85	√	√				√	
KC-409	IL2	K16225_2H10	√			√			
KC-410	IL2	KT220	√			√			
KC-342	IL2	K16225_6D2	√			√			
KC-347	IL2	K16225_3G1	√			√			
KC-309	IL2	K16225_1B9	√						
KC-346	IL2	K16225_12G11	√	√					
KC-464	IL2	K16225_9A12	√			√			
KC-1885	IL2	K16225_6D1		√					
KC-338	IL2	K16225_3H7	√						
KC-433	IL2	K16225_4H5	√						
KC-343	IL2	K16225_7A7	√						
KC-895	IL2	K16225_7E2				√			
KC-1708	IL21	K92004_9H7	√						
KC-1283	IL21	K92004_14E10	√						
KC-1707	IL21	K92004_1G10	√						
KC-2644	IL22	K29034_6D12				√			
KC-2120	IL22	K49043_7A1	√			√			
KC-2647	IL22	K49043_20E1				√			
KC-2692	IL22	K49043_20H5				√			
KC-1249	IL23	K1E007_10C11	√						
KC-2588	IL24	K56002_14E10	√						
KC-2376	IL25	K9N005_1H9	√						
KC-14185	IL25	K9N005_17C12	√						
RC-5762	IL26	K01_2M89	√	√					
KC-2797	IL3	K49024_16D2				√			
KC-1856	IL3	K92005_18A12	√			√			
KC-8316	IL3	K49024_18H1				√			
KC-2795	IL3	K49024_13G6				√			

Catalog No.	Products	Clone No.	WB	IHC	IP	ELISA	IF	ICC	FC
KC-8320	IL3	K92005_15D1				√			
KC-8317	IL3	K92005_9C2				√			
KC-2794	IL3	K49024_19G11				√			
KC-2791	IL3	K49024_18D1				√			
KC-8321	IL31	K24017_4H3				√			
KC-8323	IL31	K94022_16C3				√			
KC-8322	IL31	K94022_2C12				√			
KC-8326	IL31	K94022_5C4				√			
KC-3349	IL32	K52005_3C12				√			
KC-3350	IL32	K52005_13E7				√			
KC-3347	IL32	K52005_7C8			√	√			
KC-3549	IL32	K52005_9G12				√			
KC-3351	IL32	K52005_16H5				√			
KC-2675	IL33	K06316_12E5				√			
KC-2335	IL33	K06316_7E7				√			
KC-2336	IL33	K06316_4C9				√			
KC-3794	IL36B	K56037_7F1	√						
RN-11816	IL36B	K56037_7D8	√						
KC-21377	IL36B	K56037_12C12	√						
KC-1581	IL36G	K06317_19F9	√						
KC-1582	IL36G	K06317_2A11	√						
KC-893	IL36G	K70022_16E8		√					
KC-2008	IL37	K92047_8H12	√			√			
KC-8327	IL37	K92047_10D3				√			
KC-3017	IL37	K92047_6E6				√			
KC-2992	IL37	K92047_1B1	√			√			
KC-8331	IL37	K92047_8D4				√			
KC-3016	IL37	K92047_6E1				√			
KC-2863	IL4	K1E044_9H1				√			
KC-2895	IL4	K1E044_15E1				√			
KC-2382	IL4	K1E044_13G11	√			√			
KC-7954	IL4	K1E044_10F9				√			
KC-8237	IL4	K1E044_11G4				√			
KC-364	IL6	K06301_19H9	√			√			
KC-367	IL6	K06301_22C3	√			√			
KC-008	IL6	K06301_13E2	√						
KC-9272	IL6	K16255_7A8				√			
KC-365	IL6	K16255_5H11	√			√			
KC-366	IL6	K06301_22G12	√			√			
KC-037	IL6	KT105				√			
KC-1147	IL6	K06301_16H9				√			
KC-3339	IL7	KAA312_6C9	√						
KC-405	IL8/CXCL8	KT212	√			√			

Catalog No.	Products	Clone No.	WB	IHC	IP	ELISA	IF	ICC	FC
KC-406	IL8/CXCL8	KT213	√			√			
KC-404	IL8/CXCL8	KT215	√			√			
KC-060	IL8/CXCL8	K06289_9F3	√	√		√			
KC-403	IL8/CXCL8	KT214	√						
RC-16574	IL9	K01_4P97	√						
KC-1233	INHBC	K92030_9H3		√					
KC-1232	INHBC	K92030_3H6		√					
KC-1554	IP10	K1E015_6C8	√						
KC-7874	IP10	K1E015_17F11				√			
KC-7872	IP10	K1E015_15B5				√			
KC-7871	IP10	K1E015_10H2				√			
KC-7873	IP10	K1E015_17D11				√			
RC-15695	Inhibin alpha	K01_3W09	√						
KC-685	Inhibin beta A	KAA378_7F6	√			√			
KC-684	Inhibin beta A	KAA378_4H12	√			√			
KC-475	Inhibin beta A	KAA378_14E10	√	√		√			
RC-15015	Inhibin beta B	K01_3N22	√						
RC-14994	Interferon beta	K01_3N01	√						
KC-047	Interferon gamma	KT218	√			√			
KC-201	Interferon gamma	K29001_1B9	√			√			
KC-041	Interferon gamma	K29001_10H3	√			√			
KC-043	Interferon gamma	K29001_1C9	√			√			
KC-046	Interferon gamma	K29001_11F4	√			√			
RC-16449	LEFTY	K01_4N71	√						
KC-16797	LIF	K49010_10D11	√						
KC-16801	LIF	K49010_9A5	√						
KC-3378	LIF	K49010_10G8	√						
KC-3294	LTB	K1E047_11D3	√	√					
KC-2542	LTB	K1E047_3G1	√						
KC-1621	LTB	K06331_11F9		√					
RC-15597	Lymphotoxin alpha	K01_3U10	√						
RC-3053	M-CSF	K01_1T70	√	√					
RC-15393	M-CSF	K01_3S04	√						
KC-2746	MANF	K56023_1F10		√		√			
KC-3390	MANF	K56023_19F1	√			√			
KC-15494	MANF	K56023_12G9		√					
RC-4278	MDK	K01_1K43	√						
RC-5101	MIF	K01_1T89	√						
RC-16857	MIF	K01_4S84	√						
KC-3780	Metalloproteinase	K1E063_8B3	√						
KC-3129	Metalloproteinase	K1E063_16H7		√					
RC-16931	Metalloproteinase	K01_4T59	√						
RC-6420	NAMPT	K01_2U61	√	√				√	

Catalog No.	Products	Clone No.	WB	IHC	IP	ELISA	IF	ICC	FC
RC-16392	NGF	K01_4N14	√	√			√		
RC-5249	NODAL	K01_1U83	√						
KC-6145	NOG	K01_2R76	√					√	
RC-3828	NTF4	K03_1J87		√					
RC-16938	Neutrophil Elastase	K01_4T66	√						
RC-16241	Oncostatin-M	K01_4L60	√						
RC-14270	Oncostatin-M	K03_1J67							√
OC-087	Osteoprotegerin		√						
KC-834	Osteoprotegerin	K92019_3F12		√					
KC-3587	PDGFD	K8U018_4B12				√			
KC-3596	PDGFD	K8U018_7F10				√			
KC-3615	PDGFD	K8U018_16H12				√			
RC-5862	PF4	K01_2N90	√	√					
RC-15634	PF4	K01_3U47	√						
KC-46577	PF4V1	K9N071_20H1	√						
KC-46524	PF4V1	K9N071_4C4	√						
KC-39678	PIBF1	K1E093_10E2	√						
KC-39206	PIBF1	K1E093_3B2	√						
KC-1701	PTN	K06279_4G7	√						
KC-1700	PTN	K06279_1F9	√						
KC-2789	PTN	K16276_11G8			√				
RC-8572	Prothrombin	K03_1L08	√	√	√				√
RC-15615	Prothrombin	K01_3U28	√						
RC-15158	RANTES	K01_3P66	√						
KC-7784	RSPO1	K52018_16H4				√			
KC-1817	RSPO1	K52018_2H1	√			√			
KC-7787	RSPO1	K52018_15H2				√			
KC-7788	RSPO1	K52018_10E11				√			
RC-15425	SCF	K01_3S36	√	√					
KC-3298	SCG2	K56039_10B10		√					
KC-3336	SCG2	K56039_6D5	√						
KC-22247	SCG2	K56039_2E11		√					
KC-39482	SCGB3A1	K29113_7A2		√					
KC-40230	SCGB3A1	K29113_5G11		√					
KC-38897	SCGB3A1	K29113_7G11		√					
KC-1703	SCGB3A2	K49035_3H11	√						
KC-3109	SDF1	K92033_9D8				√			
KC-1710	SDF1	K92033_2F2	√	√		√			
KC-1712	SDF1	K92033_5D11	√	√		√			
KC-3108	SDF1	K92033_10E11				√			
KC-7363	SDF1	K92033_1C10				√			
KC-1711	SDF1	K92033_2H2	√	√					
KC-12216	SDF1	K92033_10B9	√						

Catalog No.	Products	Clone No.	WB	IHC	IP	ELISA	IF	ICC	FC
KC-1989	SDF1	K92033_13E1		√					
KC-7362	SDF1	K92033_11E7				√			
KC-3015	SPP1	K52025_4B11				√			
KC-2995	SPP1	K52025_19H12				√			
KC-3007	SPP1	K52025_17C5				√			
KC-1642	SPP1	K52025_9H8	√		√	√			
KC-3003	SPP1	K52025_7G3				√			
KC-3635	TGFA	K94027_6G11	√			√			
KC-3481	TGFA	K94022_3B1				√			
KC-3013	TGFA	K94022_5G8				√			
KC-3012	TGFA	K94027_2E8				√			
KC-3512	TGFA	K94022_1B11				√			
KC-1767	TGFA	K94022_18E9	√			√			
KC-3080	TGFB1	K01_1K15	√						
KC-4279	TGFB1	K01_1J28		√					
KC-4082	TGFB1	K01_1J30		√					
RC-15338	TGFBI	K01_3R48	√	√					
KC-2682	THPO	K40060_8G5				√			
KC-8521	THPO	K03005_2D4				√			
KC-2406	THPO	K40060_9G8	√			√			
KC-2408	THPO	K40060_1B6		√		√			
KC-2407	THPO	K40060_19F11	√			√			
KC-064	TNF	K06288_1B2	√			√			
KC-412	TNF	K03008_3A9	√			√			
KC-398	TNF	KT31	√			√			
KC-3403	TNF	K06303_11C11				√			
KC-539	TNF	K29020_9E6	√		√				
KC-066	TNF	K06288_6G6	√						
KC-8769	TNF	K06303_15B5				√			
KC-8768	TNF	K06303_14B4				√			
KC-063	TNF	KT61	√			√			
KC-1796	TNF	K06303_2B10		√					
KC-9914	TNF	K29020_8A4				√			
KC-4498	TNF	K01_1K07		√					
KC-4275	TNF	K01_1K19	√	√					
KC-371	TNF	K06288_2B12	√						
KC-372	TNF	K06288_5G2	√						
KC-373	TNF	K06288_8E8	√						
KC-8766	TNF	K06303_11G3				√			
KC-8759	TNF	K06303_5F5				√			
KC-6017	TNF	K01_2Q47				√			
KC-2610	TNFSF10	K1E048_9G2	√						
KC-8166	TNFSF10	K1E048_10B9	√						

Catalog No.	Products	Clone No.	WB	IHC	IP	ELISA	IF	ICC	FC
KC-7586	TNFSF10	K1E048_10C7	√						
KC-3775	TNFSF13B	K52074_12G7	√			√			
KC-7843	TNFSF13B	K52074_15H11	√			√			
KC-7844	TNFSF13B	K52074_20H3				√			
KC-1326	TNFSF14	K70045_4A7	√	√		√			
KC-1325	TNFSF14	K70045_1E6	√	√		√			
KC-3335	TNFSF14	K70045_6F8	√			√			
KC-3018	TNFSF14	K70045_20D5				√			
KC-3002	TNFSF14	K70045_8H6				√			
KC-8341	TNFSF14	K70045_20G2				√			
KC-2269	TSLP	K49024_1G12	√						
RC-5947	Tissue Factor	K01_2P76	√	√				√	
KC-997	Tissue Factor	K06319_4H12	√	√					
RC-5516	Tissue Factor	K01_2K37	√	√					
RC-5492	WNT16	K01_2K13	√						
RC-5493	WNT2B	K01_2K14	√					√	
KC-6193	WNT3	K01_2S25	√						
RC-5494	WNT5A	K01_2K15	√					√	
RN-018	WNT7A	K8U018_3H2	√	√					
RC-15379	Wnt2	K01_3R89	√						
KC-6192	Wnt5b	K01_2S24	√						
RC-16247	Wnt5b	K01_4L66	√						
KC-8295	XCL1	K40033_14E11				√			
KC-697	XCL1	K40033_7A2		√		√			
KC-8294	XCL1	K40033_11H1				√			
KC-8297	XCL1	K40033_16B9				√			

## Flagship Products -Antibody Pairs

Catalog No.	Products	Captrue Antibody	Detection Antibody
ES-1767	APRIL	KC-22154	KC-22942
ES-1769	APRIL	KC-22124	KC-22942
ES-1768	APRIL	KC-22085	KC-22942
ES-565	AREG	KC-3467	KC-3685
ES-305	AREG	KC-3467	KC-514
ES-304	AREG	KC-3468	KC-3467
ES-306	AREG	KC-3467	KC-3625
ES-563	AREG	KC-3468	KC-3467
ES-564	AREG	KC-3625	KC-3467
ES-1819	Biglycan	KC-22034	KC-22042
ES-1821	Biglycan	KC-22069	KC-22042
ES-1820	Biglycan	KC-22334	KC-22143
ES-577	CCL1	KC-3604	KC-2645
ES-575	CCL1	KC-2645	KC-3577
ES-576	CCL1	KC-3577	KC-2645
ES-271	CCL1	KC-2648	KC-2645
ES-280	CCL1	KC-2651	KC-2645
ES-352	CCL1	KC-2645	KC-2691
ES-2215	CCL16	KC-1551	KC-12939
ES-2216	CCL16	KC-1553	KC-12943
ES-2217	CCL16	KC-12939	KC-1551
ES-041	CCL2	KC-021	KC-413
ES-042	CCL2	KC-021	KC-480
ES-043	CCL2	KC-480	KC-021
ES-687	CCL3	KC-7251	KC-7252
ES-686	CCL3	KC-7250	KC-7251
ES-688	CCL3	KC-7251	KC-7253
ES-1466	CCL7	KC-12040	KC-19668
ES-1009	CCL8	KC-7956	KC-2841
ES-1008	CCL8	KC-2841	KC-1858
ES-1007	CCL8	KC-2841	KC-1859
ES-294	CCL8	KC-1858	KC-2841
ES-295	CCL8	KC-1990	KC-2841
ES-296	CCL8	KC-2842	KC-2841
ES-693	CD70	KC-7325	KC-7328
ES-692	CD70	KC-7324	KC-7328
ES-694	CD70	KC-7326	KC-7324
ES-1039	CXCL11	KC-1549	KC-7875
ES-1038	CXCL11	KC-7875	KC-1549

Catalog No.	Products	Captrue Antibody	Detection Antibody
ES-1037	CXCL11	KC-7875	KC-1846
ES-946	CXCL17	KC-4009	KC-2116
ES-948	CXCL17	KC-2117	KC-4010
ES-947	CXCL17	KC-2057	KC-2116
ES-1879	CXCL17	KC-13852	KC-4010
ES-1880	CXCL17	KC-13853	KC-4010
ES-357	CXCL6	KC-2840	KC-3110
ES-359	CXCL6	KC-3112	KC-2840
ES-358	CXCL6	KC-3110	KC-3111
ES-3493	CXCL6	KC-3112	KC-3110
ES-3494	CXCL6	KC-2840	KC-3112
ES-1373	EG-VEGF	KC-27082	KC-27085
ES-1374	EG-VEGF	KC-27085	KC-27102
ES-1375	EG-VEGF	KC-27855	KC-27102
ES-209	FAM3B	KC-2475	KC-2898
ES-235	FAM3B	KC-2475	KC-2897
ES-249	FAM3B	KC-2475	KC-2896
ES-744	FAM3B	KC-2475	KC-30823
ES-745	FAM3B	KC-2475	KC-30824
ES-1064	FAM3B	KC-8306	KC-8310
ES-1065	FAM3B	KC-8306	KC-8308
ES-1066	FAM3B	KC-8306	KC-8309
ES-1610	FAM3C	KC-29479	KC-29509
ES-1609	FAM3C	KC-29532	KC-29509
ES-1611	FAM3C	KC-29636	KC-29509
ES-081	FGF2	KC-070	KC-071
ES-1069	FGF5	KC-7964	KC-8243
ES-1068	FGF5	KC-7964	KC-1569
ES-1070	FGF5	KC-7964	KC-1176
ES-082	G-CSF	KC-061	KC-062
ES-1028	G-CSF	KC-7975	KC-7976
ES-1030	G-CSF	KC-7976	KC-7977
ES-1029	G-CSF	KC-7975	KC-7977
ES-1318	GDF15	KC-27125	KC-27144
ES-1317	GDF15	KC-27191	KC-27125
ES-1319	GDF15	KC-27144	KC-27125
ES-1930	GKN1	KC-10468	KC-991
ES-1929	GKN1	KC-10471	KC-991
ES-1928	GKN1	KC-10471	KC-10470
ES-040	GM-CSF	KC-051	KC-050
ES-2870	GM-CSF	KC-056	KC-050

Catalog No.	Products	Captrue Antibody	Detection Antibody
ES-3722	Growth Hormone 1	KC-189	KC-35901
ES-3721	Growth Hormone 1	KC-189	KC-302
ES-3720	Growth Hormone 1	KC-189	KC-188
ES-071	IFNA1/IFNA13	KC-643	KC-2924
ES-072	IFNA1/IFNA13	KC-642	KC-2922
ES-074	IFNA2	KC-645	KC-2879
ES-075	IFNA2	KC-644	KC-646
ES-076	IFNA2	KC-646	KC-645
ES-2672	IFNA2	KC-2879	KC-014
ES-2671	IFNA2	KC-2879	KC-9901
ES-2670	IFNA2	KC-2879	KC-015
ES-116	IL-1 alpha	KC-826	KC-825
ES-117	IL-1 alpha	KC-825	KC-826
ES-118	IL-1 alpha	KC-827	KC-825
ES-3854	IL-1 alpha	KC-828	KC-9706
ES-3850	IL-1 alpha	KC-826	KC-828
ES-3846	IL-1 alpha	KC-825	KC-9706
ES-167	IL-1 beta	KC-025	KC-308
ES-168	IL-1 beta	KC-025	KC-422
ES-297	IL-1 beta	KC-025	KC-408
ES-169	IL-1 beta	KC-024	KC-422
ES-430	IL11	KC-022	KC-303
ES-599	IL11	KC-303	KC-022
ES-431	IL11	KC-306	KC-022
ES-080	IL11	KC-426	KC-022
ES-164	IL12B	KC-2877	KC-2920
ES-165	IL12B	KC-2876	KC-2920
ES-166	IL12B	KC-2875	KC-2920
ES-600	IL15	KC-3626	KC-831
ES-601	IL15	KC-3541	KC-3680
ES-068	IL15	KC-830	KC-831
ES-069	IL15	KC-2851	KC-831
ES-070	IL15	KC-2851	KC-833
ES-328	IL15	KC-3469	KC-3626
ES-329	IL15	KC-3469	KC-3627
ES-330	IL15	KC-3470	KC-554
ES-602	IL15	KC-3626	KC-3680
ES-065	IL16	KC-1485	KC-1782
ES-066	IL16	KC-1485	KC-2888
ES-067	IL16	KC-1485	KC-2889
ES-331	IL17A	KC-2993	KC-1841

Catalog No.	Products	Captrue Antibody	Detection Antibody
ES-332	IL17A	KC-3000	KC-2993
ES-333	IL17A	KC-3009	KC-3000
ES-1513	IL17A	KC-9549	KC-3000
ES-1514	IL17A	KC-2993	KC-3000
ES-1515	IL17A	KC-9561	KC-3000
ES-252	IL18	KC-679	KC-1664
ES-253	IL18	KC-678	KC-1664
ES-254	IL18	KC-680	KC-1664
ES-049	IL2	KC-409	KC-347
ES-050	IL2	KC-409	KC-895
ES-051	IL2	KC-409	KC-464
ES-268	IL22	KC-2644	KC-2120
ES-278	IL22	KC-2647	KC-2692
ES-284	IL22	KC-2647	KC-2644
ES-786	IL3	KC-8316	KC-8320
ES-787	IL3	KC-8317	KC-1856
ES-298	IL3	KC-2791	KC-2797
ES-299	IL3	KC-2794	KC-2797
ES-300	IL3	KC-2795	KC-2797
ES-785	IL3	KC-8316	KC-1856
ES-790	IL31	KC-8321	KC-8326
ES-788	IL31	KC-8321	KC-8323
ES-789	IL31	KC-8322	KC-8323
ES-604	IL32	KC-3549	KC-3349
ES-370	IL32	KC-3351	KC-3349
ES-366	IL32	KC-3350	KC-3347
ES-603	IL32	KC-3350	KC-3349
ES-203	IL33	KC-2336	KC-2675
ES-204	IL33	KC-2335	KC-2675
ES-1657	IL36B	KC-21329	KC-21424
ES-1656	IL36B	KC-3794	KC-21424
ES-1658	IL36B	KC-21384	KC-21424
ES-791	IL37	KC-8327	KC-8331
ES-793	IL37	KC-8327	KC-2008
ES-792	IL37	KC-8327	KC-3017
ES-348	IL37	KC-2992	KC-2008
ES-349	IL37	KC-3017	KC-2008
ES-350	IL37	KC-3016	KC-2008
ES-1105	IL4	KC-7954	KC-2863
ES-1106	IL4	KC-7954	KC-8237
ES-1107	IL4	KC-2382	KC-2863

Catalog No.	Products	Captrue Antibody	Detection Antibody
ES-262	IL4	KC-2863	KC-2895
ES-263	IL4	KC-2863	KC-2864
ES-264	IL4	KC-2864	KC-2382
ES-077	IL6	KC-364	KC-367
ES-079	IL6	KC-1147	KC-365
ES-2497	IL6	KC-008	KC-364
ES-2496	IL6	KC-364	KC-9272
ES-2498	IL6	KC-008	KC-9272
ES-044	IL8/CXCL8	KC-405	KC-406
ES-194	IL8/CXCL8	KC-404	KC-060
ES-266	IL8/CXCL8	KC-406	KC-405
ES-1035	IP10	KC-7872	KC-7874
ES-1036	IP10	KC-7873	KC-7871
ES-1034	IP10	KC-7871	KC-7874
ES-062	Inhibin beta A	KC-684	KC-685
ES-063	Inhibin beta A	KC-685	KC-684
ES-064	Inhibin beta A	KC-685	KC-475
ES-3452	Inhibin beta A	KC-685	KC-12612
ES-052	Interferon gamma	KC-201	KC-047
ES-255	Interferon gamma	KC-043	KC-201
ES-2674	Interferon gamma	KC-041	KC-047
ES-256	Interferon gamma	KC-2846	KC-047
ES-2280	LEFTY2	KC-23303	KC-23372
ES-2281	LEFTY2	KC-23349	KC-23372
ES-2282	LEFTY2	KC-23377	KC-23303
ES-1346	MANF	KC-3390	KC-2746
ES-1246	Metalloproteinase Inhibitor 1	KC-7544	KC-8150
ES-1244	Metalloproteinase Inhibitor 1	KC-7544	KC-7545
ES-1245	Metalloproteinase Inhibitor 1	KC-7545	KC-7546
ES-625	PDGFD	KC-3587	KC-3596
ES-626	PDGFD	KC-3615	KC-3587
ES-624	PDGFD	KC-3596	KC-3587
ES-1205	RSPO1	KC-7784	KC-7787
ES-1204	RSPO1	KC-7784	KC-7788
ES-1206	RSPO1	KC-7784	KC-1817
ES-730	SDF1	KC-3109	KC-7363
ES-728	SDF1	KC-3109	KC-1712
ES-729	SDF1	KC-3109	KC-7362
ES-354	SDF1	KC-1710	KC-3109
ES-355	SDF1	KC-3108	KC-3109
ES-356	SDF1	KC-1712	KC-3109

Catalog No.	Products	Captrue Antibody	Detection Antibody
ES-634	SPP1	KC-3015	KC-3007
ES-515	SPP1	KC-3015	KC-2995
ES-514	SPP1	KC-1642	KC-2995
ES-322	SPP1	KC-3007	KC-3015
ES-324	SPP1	KC-2995	KC-3003
ES-635	TGFA	KC-3013	KC-3635
ES-325	TGFA	KC-3012	KC-3013
ES-326	TGFA	KC-3012	KC-1767
ES-526	TGFA	KC-3481	KC-3635
ES-525	TGFA	KC-3512	KC-3635
ES-257	THPO	KC-2408	KC-2682
ES-258	THPO	KC-2406	KC-2682
ES-3838	THPO	KC-19521	KC-19532
ES-2673	THPO	KC-8521	KC-2682
ES-3839	THPO	KC-19521	KC-19542
ES-3837	THPO	KC-19521	KC-19538
ES-375	TNF	KC-064	KC-412
ES-376	TNF	KC-3403	KC-064
ES-377	TNF	KC-064	KC-3403
ES-3102	TNF	KC-8759	KC-8768
ES-3103	TNF	KC-539	KC-064
ES-3106	TNF	KC-539	KC-8766
ES-3107	TNF	KC-539	KC-8769
ES-3108	TNF	KC-9914	KC-8769
ES-3110	TNF	KC-9914	KC-8769
ES-1250	TNFSF10	KC-2610	KC-8167
ES-1248	TNFSF10	KC-7584	KC-8165
ES-1249	TNFSF10	KC-7584	KC-8166
ES-1251	TNFSF13B	KC-7843	KC-3775
ES-1252	TNFSF13B	KC-7844	KC-3775
ES-894	TNFSF14	KC-3335	KC-1326
ES-895	TNFSF14	KC-8341	KC-1326
ES-896	TNFSF14	KC-3335	KC-1325
ES-346	TNFSF14	KC-1325	KC-3018
ES-347	TNFSF14	KC-3002	KC-3018
ES-901	XCL1	KC-8294	KC-8295
ES-902	XCL1	KC-8295	KC-8297
ES-903	XCL1	KC-697	KC-8295

## Flagship Products-Recombinant Human Proteins

Catalog No.	Products	Protein Expression Range	Expression Systems	Tag
PP-1745	ADIPOQ	Glu19-Asn244	<i>Escherichia coli</i>	C-His
PP-836	AIMP1	Glu111-Gly290	<i>Escherichia coli</i>	C-His
PQ-869	ALKAL1	Gly31-Tyr110	HEK293	C-His
PP-1800	AMBN	Pro121-Ala400	<i>Escherichia coli</i>	C-His
PP-1263	AREG	Pro111-Arg180	<i>Escherichia coli</i>	C-His
PP-1532	BDNF	Ala151-Met220	<i>Escherichia coli</i>	C-His
PQ-124	BGN	Asp38-Lys368	HEK293	C-His
PP-3783	BMP10	Asn317-Arg424	<i>Escherichia coli</i>	N-SUMO & N-His
PP-3767	BMP15	Gln268-Arg392	<i>Escherichia coli</i>	N-SUMO & N-His
PP-12350	BMP6	Ser375-His513	<i>Escherichia coli</i>	N-SUMO & N-His
PQ-3513	C1QTNF4	Pro21-Pro200	HEK293	C-His
PP-1270	C5	Gln381-Thr470	<i>Escherichia coli</i>	C-His
PQ-497	CCL1	Lys24-Lys96	HEK293	N-MBP & C-His
PQ-269	CCL15	Gln22-Ile113	HEK293	C-His
PQ-247	CCL16	Gln24-Gln120	HEK293	C-His
PP-538	CCL2	Gln24-Thr99	<i>Escherichia coli</i>	C-His
PQ-619	CCL26	Thr24-Leu94	HEK293	C-His
PP-1460	CCL28	Ser20-Tyr127	<i>Escherichia coli</i>	N-MBP & C-His
PP-3670	CCL3	Thr31-Leu90	<i>Escherichia coli</i>	C-His
PQ-190	CCL5	Ser24-Ser91	HEK293	N-MBP & C-His
PP-3166	CCL7	Gln24-Leu99	<i>Escherichia coli</i>	N-GST
PP-3673	CCL8	Gln24-Pro99	<i>Escherichia coli</i>	N-SUMO & C-His
PP-25345	CCN6	Pro31-Glu110	<i>Escherichia coli</i>	N-His
PQ-555	CD70	Phe41-Trp190	HEK293	N-His & N-hFc
PP-1399	CSF1	Gln251-Gly330	<i>Escherichia coli</i>	C-His
PQ-3371	CSF2	Ala18-Glu144	HEK293	N-His
PP-140	CSF3	Gln41-Val200	<i>Escherichia coli</i>	N-MBP & C-His
PP-5676	CSH2	Tyr61-Glu200	<i>Escherichia coli</i>	C-His
PP-479	CSHL1	Thr91-Leu170	<i>Escherichia coli</i>	C-His
PQ-396	CSPG5	Thr241-Gly330	HEK293	C-hFc & C-His
PP-1152	CX3CL1	Arg71-Gly160	<i>Escherichia coli</i>	C-His
PQ-208	CXCL10	Val22-Pro98	HEK293	N-MBP & C-His
PP-3210	CXCL11	Phe22-Phe94	<i>Escherichia coli</i>	N-SUMO & C-His
PP-3056	CXCL12	Lys22-Met93	<i>Escherichia coli</i>	N-MBP & C-His
PP-3194	CXCL14	Ser35-Glu111	<i>Escherichia coli</i>	N-SUMO & N-His
PP-1553	CXCL17	Gly31-Cys110	<i>Escherichia coli</i>	N-SUMO & C-His
PQ-921	CXCL2	Ala35-Asn107	HEK293	C-hFc & C-His
PQ-267	CXCL6	Gly38-Asn114	HEK293	N-MBP & C-His
PP-530	IL8/CXCL8	Glu31-Glu90	<i>Escherichia coli</i>	C-His
PP-12486	CXCL9	Thr23-Thr125	<i>Escherichia coli</i>	C-His
PQ-4184	DDT	Pro2-Leu118	HEK293	N-MBP & C-His

Catalog No.	Products	Protein Expression Range	Expression Systems	Tag
PQ-561	EBI3	Pro41-Pro220	HEK293	N-MBP & C-His
PP-514	ECM1	Leu51-His150	<i>Escherichia coli</i>	C-His
PP-057	EGF	Lys1061-Met1140	<i>Escherichia coli</i>	C-His
PP-1053	ENDOU	Leu71-Asn190	<i>Escherichia coli</i>	C-His
PQ-007	EPO	Ala28-Arg193	HEK293	tag free
PP-1104	F2	Val51-Glu180	<i>Escherichia coli</i>	N-SUMO & C-His
PQ-529	F3	Leu91-Glu160	HEK293	C-hFc & C-His
PP-1712	FAM3B	Glu30-Ser235	<i>Escherichia coli</i>	C-His
PP-11215	FAM3C	Gln25-Asp227	<i>Escherichia coli</i>	C-His
PQ-134	FAM3D	Tyr26-Phe224	HEK293	N-MBP & C-His
PP-1557	FGF1	Leu41-Lys120	<i>Escherichia coli</i>	C-His
PP-1410	FGF12	Lys71-Gln240	<i>Escherichia coli</i>	C-His
PQ-3906	FGF14	Ile71-Pro200	HEK293	N-MBP & C-His
PP-1546	FGF16	Leu11-Ser200	<i>Escherichia coli</i>	N-MBP & C-His
PP-1627	FGF18	Glu28-Ala207	<i>Escherichia coli</i>	C-His
PP-3005	FGF2	Pro143-Ser288	<i>Escherichia coli</i>	N-MBP & C-His
PP-1382	FGF23	Arg161-Gly230	<i>Escherichia coli</i>	C-His
PP-1312	FGF5	Tyr171-Lys260	<i>Escherichia coli</i>	C-His
PP-968	FGFBP2	Arg101-Lys200	<i>Escherichia coli</i>	C-His
PP-3777	GDF15	Asp201-Leu300	<i>Escherichia coli</i>	N-SUMO & C-His
PP-3778	GDF5	Ala382-Arg501	<i>Escherichia coli</i>	C-His
PP-11277	GH1	Phe27-Phe217	<i>Escherichia coli</i>	N-SUMO & C-His
PP-403	GKN1	Ser41-Val170	<i>Escherichia coli</i>	C-His
PP-104	GPI	Met1-Gln558	<i>Escherichia coli</i>	C-His
PP-512	GPR15LG	Lys25-Val81	<i>Escherichia coli</i>	N-GST
PP-234	GRN	Lys491-Thr570	<i>Escherichia coli</i>	C-His
PP-2961	HDGFL3	Lys71-Ser200	<i>Escherichia coli</i>	C-His
PP-12460	HMGB1	Met1-Glu215	<i>Escherichia coli</i>	C-His
PQ-3077	HTRA1	Gln23-Pro480	HEK293	C-His
PP-484	IFNA1,IFNA13	Cys24-Glu189	<i>Escherichia coli</i>	C-His
PP-1589	IFNA16	Phe61-Ile140	<i>Escherichia coli</i>	C-His
PP-063	IFNA2	Cys24-Glu188	<i>Escherichia coli</i>	C-His
PQ-004	IFNA2	Met1-Glu188	HEK293	C-His
PP-1107	IFNA21	Phe71-Ile140	<i>Escherichia coli</i>	C-His
PP-635	IFNA4	Phe71-Ile140	<i>Escherichia coli</i>	C-His
PP-1642	IFNA6	Phe71-Ser160	<i>Escherichia coli</i>	C-His
PP-1514	IFNA7	Phe71-Ile140	<i>Escherichia coli</i>	C-His
PP-1200	IFNA8	Phe61-Ile130	<i>Escherichia coli</i>	C-His
PP-486	IFNG	Gln24-Gly161	<i>Escherichia coli</i>	C-His
PQ-187	IFNL2	Val26-Val200	HEK293	C-mFc & C-His
PQ-218	IFNL3	Val22-Val196	HEK293	C-His
PP-3718	IFNL4	Ala22-Leu179	<i>Escherichia coli</i>	N-SUMO & N-His
PQ-176	IFNW1	Gly31-Arg190	HEK293	N-hFc & C-His

Catalog No.	Products	Protein Expression Range	Expression Systems	Tag
PP-1843	IGF1	Gly49-Ala118	<i>Escherichia coli</i>	N-MBP & C-His
PQ-021	IL10	Ser19-Asn178	HEK293	C-His
PQ-617	IL11	Pro22-Leu199	HEK293	C-His
PC-011	IL12p70	Arg23 & Met1-Ser219 &	<i>Escherichia coli</i>	C-His
PQ-374	IL12B	Met1-Ser328	HEK293	C-His
PP-792	IL15	Asn49-Ser162	<i>Escherichia coli</i>	C-His
PP-457	IL16	Asp1211-Gly1330	<i>Escherichia coli</i>	C-His
PQ-368	IL17A	Gly24-Ala155	HEK293	C-His
PQ-470	IL17D	Ala16-Pro202	HEK293	C-His
PQ-341	IL17F	Met1-Gln163	HEK293	C-His
PP-463	IL18	Tyr37-Asp193	<i>Escherichia coli</i>	C-His
PQ-217	IL18BP	Thr31-Gly194	HEK293	C-mFc & C-His
PP-064	IL1A	Ser113-Ala271	<i>Escherichia coli</i>	C-His
PP-490	IL1B	Ala117-Ser269	<i>Escherichia coli</i>	C-His
PQ-031	IL2	Met1-Thr153	HEK293	C-His
PP-981	IL21	Asn51-Lys130	<i>Escherichia coli</i>	N-SUMO & N-His
PP-381	IL22	Ala34-Ile179	<i>Escherichia coli</i>	N-MBP & C-His
PP-3713	IL23A	Arg20-Pro189	<i>Escherichia coli</i>	N-MBP & C-His
PC-010	IL-23	Arg20 & Met1-Pro189 &	<i>Escherichia coli</i>	C-His
PQ-107	IL24	Gln52-Leu206	HEK293	N-MBP & C-His
PQ-618	IL25	Tyr33-Gly177	HEK293	C-His
PP-126	IL3	Glu41-Leu130	<i>Escherichia coli</i>	N-MBP & C-His
PP-12516	IL31	Ser24-Thr164	<i>Escherichia coli</i>	C-His
PP-1680	IL32	Thr41-Val180	<i>Escherichia coli</i>	N-MBP & C-His
PP-11920	IL33	Asp131-Lys210	<i>Escherichia coli</i>	C-His
PP-1817	IL36A	His51-Leu140	<i>Escherichia coli</i>	C-His
PP-11414	IL36B	Arg5-Met164	<i>Escherichia coli</i>	N-SUMO & C-His
PP-1814	IL36G	Met1-Asp169	<i>Escherichia coli</i>	N-MBP & C-His
PP-1815	IL36RN	Met1-Asp155	<i>Escherichia coli</i>	C-His
PP-1813	IL37	Lys51-Leu140	<i>Escherichia coli</i>	C-His
PQ-360	IL4	His25-Ser153	HEK293	C-His
PQ-041	IL5	Ile20-Ser134	HEK293	N-hFc & C-His
PP-496	IL6	Val30-Met212	<i>Escherichia coli</i>	C-His
PQ-458	IL7	Asp26-His177	HEK293	tag free
PP-3132	INHBA	Gly311-Ser426	<i>Escherichia coli</i>	N-GST
PP-3741	INHBC	Gly237-Ser352	<i>Escherichia coli</i>	N-MBP & C-His
PQ-572	KITLG	Lys121-Asp210	HEK293	C-His
PQ-3441	LEFTY1	Cys251-Val360	HEK293	N-MBP & C-His
PP-1607	LEFTY2	Ser161-Ile270	<i>Escherichia coli</i>	N-SUMO & C-His
PQ-122	LIF	Ser23-Phe202	HEK293	C-His
PQ-472	LTA	Pro71-Phe200	HEK293	C-His
PQ-129	LTB	Gln51-Ala240	HEK293	N-His & N-MBP
PP-6123	MACC1	Leu31-Trp170	<i>Escherichia coli</i>	C-His

Catalog No.	Products	Protein Expression Range	Expression Systems	Tag
PP-1330	MANF	Thr81-Thr150	<i>Escherichia coli</i>	C-His
PP-759	MDK	Asp51-Lys140	<i>Escherichia coli</i>	C-His
PP-17142	MIA	Gly25-Gln131	<i>Escherichia coli</i>	C-His
PP-3268	MIF	Pro2-Ala115	<i>Escherichia coli</i>	C-His
PQ-153	MSTN	Asp267-Ser375	HEK293	N-His & N-MBP
PP-1124	NENF	Glu51-Asp170	<i>Escherichia coli</i>	C-His
PP-058	NGF	Gly131-Val230	<i>Escherichia coli</i>	N-SUMO & C-His
PQ-293	NOG	Gln28-Cys232	HEK293	C-His
PQ-351	NRG2	Leu221-Ser330	HEK293	C-hFc & C-His
PQ-852	NRG4	Pro11-Asn60	HEK293	C-His
PP-11432	NTF4	Gly81-Ala210	<i>Escherichia coli</i>	N-SUMO & C-His
PP-757	OGN	Tyr31-Leu180	<i>Escherichia coli</i>	C-His
PP-11732	OSGIN1	Tyr41-Lys110	<i>Escherichia coli</i>	C-His
PP-7013	OSGIN2	Arg61-His270	<i>Escherichia coli</i>	C-His
PQ-121	OSM	Ala26-Arg221	HEK293	C-His
PP-1223	PDGFD	Thr181-Ser250	<i>Escherichia coli</i>	C-His
PQ-492	PF4V1	Phe31-Ser104	HEK293	C-His
PP-934	PIBF1	Lys11-Glu550	<i>Escherichia coli</i>	C-His
PP-1428	PPBP	Thr41-Lys120	<i>Escherichia coli</i>	C-His
PP-11245	PROK1	Gln31-Leu100	<i>Escherichia coli</i>	N-SUMO & C-His
PP-758	PTN	Lys41-Gly160	<i>Escherichia coli</i>	C-His
PP-7715	RABEP1	Leu21-Gly440	<i>Escherichia coli</i>	C-His
PP-8279	RABEP2	Ala21-Ile180	<i>Escherichia coli</i>	C-His
PP-1202	RSPO1	Glu131-Ala260	<i>Escherichia coli</i>	C-His
PP-172	SCG2	Thr261-Glu380	<i>Escherichia coli</i>	C-His
PQ-606	SCGB3A1	Phe21-Gly104	HEK293	C-His
PQ-291	SCGB3A2	Phe22-Val93	HEK293	C-His
PQ-519	SECTM1	Glu31-Ser140	HEK293	C-His
PP-152	SPP1	Asp231-Phe300	<i>Escherichia coli</i>	C-His
PQ-160	TAFA5	Thr44-Ser132	HEK293	C-His
PP-3331	TGFA	Ser31-Val90	<i>Escherichia coli</i>	C-His
PQ-003	TGFB1	Asp281-Ser390	HEK293	N-MBP & C-His
PP-1743	TGFBI	Gln31-Ala100	<i>Escherichia coli</i>	N-SUMO & C-His
PQ-025	THPO	Ser22-Gly353	HEK293	N-MBP & C-His
PQ-243	TIMP1	Cys24-Ala207	HEK293	C-His
PP-478	TNF	Ser81-Ile230	<i>Escherichia coli</i>	C-His
PQ-342	TNF	Ser81-Ile230	HEK293	C-His
PQ-631	TNFRSF11B	Glu22-Leu401	HEK293	C-His
PP-1266	TNFSF10	Ser101-Val280	<i>Escherichia coli</i>	N-SUMO & C-His
PQ-332	TNFSF12	Ser51-Ser140	HEK293	C-hFc & C-His
PP-1626	TNFSF13	Ala105-Leu250	<i>Escherichia coli</i>	N-MBP & C-His
PP-1510	TNFSF13B	Thr141-Gly280	<i>Escherichia coli</i>	N-SUMO & C-His
PQ-147	TNFSF14	Glu81-Val240	HEK293	N-hFc & C-His

Catalog No.	Products	Protein Expression Range	Expression Systems	Tag
PP-11235	TNFSF15	Ala61-Leu250	<i>Escherichia coli</i>	C-His
PP-12747	TNFSF18	Lys61-Lys160	<i>Escherichia coli</i>	C-His
PQ-3674	TNFSF4	Ser61-Phe180	HEK293	N-His
PP-11896	TNFSF8	Ser71-Tyr230	<i>Escherichia coli</i>	N-SUMO & C-His
PP-1699	TNFSF9	Cys51-Ser250	<i>Escherichia coli</i>	C-His
PP-1592	TSLP	Tyr29-Gln159	<i>Escherichia coli</i>	N-MBP & C-His
PP-11971	TXLNA	Ala11-Gln160	<i>Escherichia coli</i>	N-MBP & C-His
PP-1431	WNT10A	Arg241-Pro320	<i>Escherichia coli</i>	C-His
PP-12117	WNT10B	Lys171-His250	<i>Escherichia coli</i>	C-His
PP-721	WNT11	Gln231-Asp310	<i>Escherichia coli</i>	C-His
PP-474	WNT16	Thr191-Asn330	<i>Escherichia coli</i>	C-His
PP-12271	WNT2	Glu131-Gly210	<i>Escherichia coli</i>	C-His
PP-1597	WNT5A	Lys261-Val350	<i>Escherichia coli</i>	C-His
PP-1565	WNT7A	Lys231-Gly310	<i>Escherichia coli</i>	C-His
PP-12368	WNT7B	Cys131-Thr210	<i>Escherichia coli</i>	C-His
PQ-3386	WNT9A	Cys141-Trp230	HEK293	N-MBP & C-His
PP-1237	XCL1	Val22-Gly114	<i>Escherichia coli</i>	C-His

# Empowering Protein Science



[www.absea.bio](http://www.absea.bio)

[info@abseabio.com](mailto:info@abseabio.com)

Germany | USA | China