

AUTOIMMUNE DISORDERS

Absea®

Introducing our product line of reagents to characterize autoimmune disease markers

Significance

Autoimmune diseases are conditions in which the immune system mistakenly attacks the body's tissues, leading to chronic inflammation, tissue damage, and potentially organ failure. These diseases are often chronic, with symptoms that worsen over time, significantly affecting lifespan and quality of life. Common conditions include:

Systemic Lupus Erythematosus (SLE)

Autoimmune Encephalitis (AE)

Polymyositis (PM)

Paraneoplastic Syndromes (PNS)

Absea® provides a selection of autoantigens and antibodies for clinical research and pharmaceutical development.

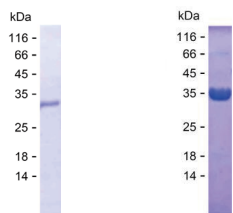
Features

Broad Range of Autoantigens

Recombinant Humanized Antibodies (Protein Standards)

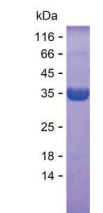
One-Stop Autoimmune Diagnostic Solutions

Cutting-edge PNS & AE Panels



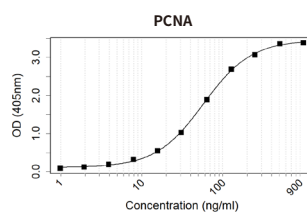
SDS-PAGE

PP-071
C1QA



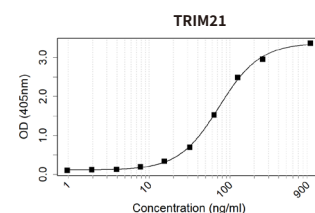
SDS-PAGE

PP-4381
PCNA



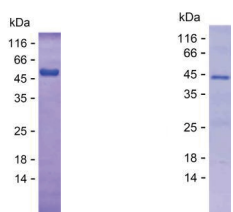
Indirect ELISA

RC-002



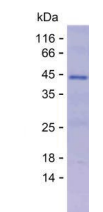
Indirect ELISA

RC-007



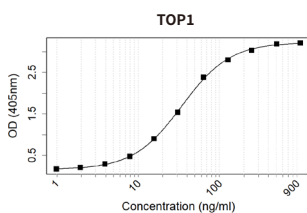
SDS-PAGE

PP-3929
SSB



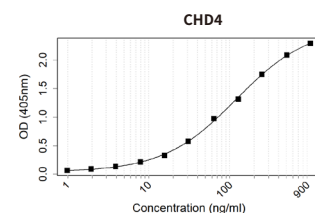
SDS-PAGE

PP-4177
PNMA2



Indirect ELISA

RC-005



Indirect ELISA

RN-004

Flagship Products-Recombinant Human Proteins

Disease	Product	Catalog No.	Gene Name	Expression system	Expression Range
Mellitu (T1DM)	GAD	PP-11352	GAD2	<i>Escherichia coli</i>	Leu381-Glu520
	GAD	PP-18759	GAD2	<i>Escherichia coli</i>	Leu381-Glu520
	IA2	PQ-042	PTPRN	HEK293	Leu41-Val440
	IA2	PP-556	PTPRN	<i>Escherichia coli</i>	Gly251-Ala560
	IA2	PP-555	PTPRN	<i>Escherichia coli</i>	Val381-Ser570
	IC	PP-390	ICA1	<i>Escherichia coli</i>	Pro261-Ser350
ANCA-associated vasculitis (AAV)	MPO	PQ-4054	MPO	HEK293	Ala49-Ser745
	PR3	PP-3259	PRTN3	<i>Escherichia coli</i>	Ile28-Arg248
	PR3	PP-3260	PRTN3	<i>Escherichia coli</i>	Ala26-Arg249
	PR3	PQ-226	PRTN3	HEK293	Ile28-Arg248
	PR3	PQ-4064	PRTN3	HEK293	Ala26-Arg249
	PR3	PQ-4055	PRTN3	HEK293	Ala26-Arg249
Infertility	HCG	PP-4007	PPP1R11	<i>Escherichia coli</i>	Met1-His126
	INHBA	PP-3132	INHBA	<i>Escherichia coli</i>	Gly311-Ser426
	INHBA	PP-3133	INHBA	<i>Escherichia coli</i>	Gly311-Ser426
	INHBA	PQ-184	INHBA	HEK293	Gly311-Ser426
	INHBA	PQ-451	INHBA	HEK293	Gly311-Ser426
	INHBC	PP-3741	INHBC	<i>Escherichia coli</i>	Gly237-Ser352
	INHBC	PP-3742	INHBC	<i>Escherichia coli</i>	Gly237-Ser352
Pernicious Anemia (PA) / Atrophic Gastritis (AG)	ATP4A	PP-4278	ATP4A	<i>Escherichia coli</i>	Ser11-Ala90
	ATP4B	PQ-3666	ATP4B	HEK293	Val61-Glu290
	IF	PQ-127	CBLIF	HEK293	Ser19-Tyr417
	IF	PP-11419	CBLIF	<i>Escherichia coli</i>	Met61-Ala400
	IF	PP-11783	CBLIF	<i>Escherichia coli</i>	Met61-Ala400
Sjögren's Syndrome (SS)	CENPB	PP-12357	CENPB	<i>Escherichia coli</i>	Val61-Ser510
	CENPB	PQ-014	CENPB	HEK293	Leu501-Ala590
	CENPB	PQ-410	CENPB	HEK293	Leu501-Ala590
	Ku70	PP-10884	XRCC6	<i>Escherichia coli</i>	Glu11-Lys260
	Ku70	*PP-11930	XRCC6	<i>Escherichia coli</i>	Glu11-Glu240
	Ku80	PP-170	XRCC5	<i>Escherichia coli</i>	Gln571-Asp730
	Ro52	PP-211	TRIM21	<i>Escherichia coli</i>	Gln81-Lys260
	Ro60	PP-150	RO60	<i>Escherichia coli</i>	Met381-Ile530
	Ro60	PQ-020	RO60	HEK293	Met381-Ile530
	SS-B/La	PP-3929	SSB	<i>Escherichia coli</i>	Met1-Gln408
	α-Fodrin	PP-24924	SPTAN1	<i>Escherichia coli</i>	Thr11-Asn590
	α-Fodrin	PP-5039	SPTAN1	<i>Escherichia coli</i>	Thr11-Lys250
	Mixed Connective Tissue Disease (MCTD)	Ku70	PP-10884	XRCC6	<i>Escherichia coli</i>
Ku70		*PP-11930	XRCC6	<i>Escherichia coli</i>	Glu11-Glu240
Ku80		PP-170	XRCC5	<i>Escherichia coli</i>	Gln571-Asp730
RA33		*PP-224	HNRNPA2B1	<i>Escherichia coli</i>	Glu11-Asn320
SNRPB		PP-26772	SNRPB	<i>Escherichia coli</i>	Met1-Pro240
SNRPB		PP-6497	SNRPB	<i>Escherichia coli</i>	Ile41-Met120
U1-70K		*PP-553	SNRNP70	<i>Escherichia coli</i>	Ala11-Arg180
U1-A		PP-26767	SNRPA	<i>Escherichia coli</i>	Ala2-Lys282
U1-A		PP-131	SNRPA	<i>Escherichia coli</i>	Arg111-Leu190
U1-C		PP-26773	SNRPC	<i>Escherichia coli</i>	Met1-Arg159
U1-C	PP-10335	SNRPC	<i>Escherichia coli</i>	Lys31-Pro100	

*2026 new product

Disease	Product	Catalog No.	Gene Name	Expression system	Expression Range
Anti-myositis antibody spectrum	BCOADC-E2	PP-7618	DBT	<i>Escherichia coli</i>	Asp71-Asp330
	DFS70	PP-550	PSIP1	<i>Escherichia coli</i>	Ile11-Pro490
	EJ	PP-288	GARS1	<i>Escherichia coli</i>	Glu61-Arg130
	Fibrillarin	PP-5932	FBL	<i>Escherichia coli</i>	Gly71-Lys320
	HMGCR	PP-4354	HMGCR	<i>Escherichia coli</i>	Lys351-Lys460
	Jo-1	PP-26768	HARS1	<i>Escherichia coli</i>	Ala2-Cys509
	Jo-1	PP-166	HARS1	<i>Escherichia coli</i>	Phe231-Phe320
	KS	PP-4654	NARS1	<i>Escherichia coli</i>	Met1-Pro548
	Ku70	PP-10884	XRCC6	<i>Escherichia coli</i>	Glu11-Lys260
	Ku70	*PP-11930	XRCC6	<i>Escherichia coli</i>	Glu11-Glu240
	Ku80	PP-170	XRCC5	<i>Escherichia coli</i>	Gln571-Asp730
	MDA5	*PP-5396	IFIH1	<i>Escherichia coli</i>	Gln531-Arg820
	Mi-2 α	PP-6275	CHD3	<i>Escherichia coli</i>	Ala241-Asp380
	Mi-2 β	*PP-11927	CHD4	<i>Escherichia coli</i>	Glu1291-Gln1550
	NOR90	PP-197	UBTF	<i>Escherichia coli</i>	Asp341-Glu450
	NXP2	PP-471	MORC3	<i>Escherichia coli</i>	Met1-Thr939
	NXP2	PP-467	MORC3	<i>Escherichia coli</i>	Phe361-Val930
	NXP2	PP-469	MORC3	<i>Escherichia coli</i>	Gln641-Val930
	OGDC-E2	PP-271	DLST	<i>Escherichia coli</i>	Ala151-Arg220
	OJ	PP-5782	IARS1	<i>Escherichia coli</i>	Ile871-Ala1260
	P0	*PP-092	RPLP0	<i>Escherichia coli</i>	Ser11-Asp310
	PDC-E2	PP-4746	DLAT	<i>Escherichia coli</i>	His91-Pro410
	PL-12	PP-4888	AARS1	<i>Escherichia coli</i>	Arg11-Leu450
	PL-7	PP-4811	TARS1	<i>Escherichia coli</i>	Glu331-Glu720
	PM-Scl-100	PP-26791	EXOSC10	<i>Escherichia coli</i>	Tyr491-Tyr880
	PM-Scl-100	PP-366	EXOSC10	<i>Escherichia coli</i>	Pro691-Lys850
	PM-Scl-75	PP-7672	EXOSC9	<i>Escherichia coli</i>	Arg111-Lys430
	PM-Scl-75	PP-7673	EXOSC9	<i>Escherichia coli</i>	Arg111-Lys430
	Ro52	PP-211	TRIM21	<i>Escherichia coli</i>	Gln81-Lys260
	Ro60	PP-150	RO60	<i>Escherichia coli</i>	Met381-Ile530
	Ro60	PQ-020	RO60	HEK293	Met381-Ile530
	RPP25	PP-11663	RPP25	<i>Escherichia coli</i>	Met1-Ala199
	SAE1	PP-2879	SAE1	<i>Escherichia coli</i>	Glu171-Asp290
	SAE2	PP-5513	UBA2	<i>Escherichia coli</i>	Pro171-Ala380
	Scl-70	PQ-4647	TOP1	Baculovirus infected Sf9	Met1-Phe765
	Scl-70	PQ-4645	TOP1	Baculovirus infected Sf9	Gln201-Asp760
	Scl-70	PP-4377	TOP1	<i>Escherichia coli</i>	Glu221-Ile420
	SRP54	PP-329	SRP54	<i>Escherichia coli</i>	Thr11-Met430
	SRP54	PP-11934	SRP54	<i>Escherichia coli</i>	Asn181-Leu250
	SS-B/La	PP-3929	SSB	<i>Escherichia coli</i>	Met1-Gln408
	TIF1- γ	PP-11926	TRIM33	<i>Escherichia coli</i>	Tyr941-Asp1120
	U1-70K	*PP-553	SNRNP70	<i>Escherichia coli</i>	Ala11-Arg180
	U1-A	PP-26767	SNRPA	<i>Escherichia coli</i>	Ala2-Lys282
	U1-A	PP-131	SNRPA	<i>Escherichia coli</i>	Arg111-Leu190
	U1-C	PP-26773	SNRPC	<i>Escherichia coli</i>	Met1-Arg159
	U1-C	PP-10335	SNRPC	<i>Escherichia coli</i>	Lys31-Pro100
	YARS (Ha)	PP-4920	YARS1	<i>Escherichia coli</i>	Leu11-Pro360
	ZoB	PP-5476	FARSB	<i>Escherichia coli</i>	Ile91-Tyr210
	ZoB	PP-5477	FARSB	<i>Escherichia coli</i>	Phe131-Tyr220
	ZoB	PP-5478	FARSB	<i>Escherichia coli</i>	Phe131-Tyr220
Interstitial Lung Disease (ILD)	MUC1	PP-185	MUC1	<i>Escherichia coli</i>	Pro31-Ser150
	MUC1	PP-186	MUC1	<i>Escherichia coli</i>	Pro31-Ser100
	MUC1	PQ-391	MUC1	HEK293	Pro31-Ser100

Disease	Product	Catalog No.	Gene Name	Expression system	Expression Range	
Antinuclear Antibody Profile (ANA Profile)	BCOADC-E2	PP-7618	DBT	<i>Escherichia coli</i>	Asp71-Asp330	
	CENPB	PP-12357	CENPB	<i>Escherichia coli</i>	Val61-Ser510	
	CENPB	PQ-014	CENPB	HEK293	Leu501-Ala590	
	CENPB	PQ-410	CENPB	HEK293	Leu501-Ala590	
	Jo-1	PP-26768	HARS1	<i>Escherichia coli</i>	Ala2-Cys509	
	Jo-1	PP-166	HARS1	<i>Escherichia coli</i>	Phe231-Phe320	
	Ku70	PP-10884	XRCC6	<i>Escherichia coli</i>	Glu11-Lys260	
	Ku70	*PP-11930	XRCC6	<i>Escherichia coli</i>	Glu11-Glu240	
	Ku80	PP-170	XRCC5	<i>Escherichia coli</i>	Gln571-Asp730	
	Mi-2β	*PP-11927	CHD4	<i>Escherichia coli</i>	Glu1291-Gln1550	
	OGDC-E2	PP-271	DLST	<i>Escherichia coli</i>	Ala151-Arg220	
	P0	*PP-092	RPLP0	<i>Escherichia coli</i>	Ser11-Asp310	
	PCNA	PP-4381	PCNA	<i>Escherichia coli</i>	Met1-Ser261	
	PDC-E2	PP-4746	DLAT	<i>Escherichia coli</i>	His91-Pro410	
	PM-Scl-100	PP-26791	EXOSC10	<i>Escherichia coli</i>	Tyr491-Tyr880	
	PM-Scl-100	*PP-366	EXOSC10	<i>Escherichia coli</i>	Pro691-Lys850	
	PM-Scl-75	PP-7672	EXOSC9	<i>Escherichia coli</i>	Arg111-Lys430	
	PM-Scl-75	PP-7673	EXOSC9	<i>Escherichia coli</i>	Arg111-Lys430	
	Ro52	PP-211	TRIM21	<i>Escherichia coli</i>	Gln81-Lys260	
	Ro60	PP-150	RO60	<i>Escherichia coli</i>	Met381-Ile530	
	Ro60	PQ-020	RO60	HEK293	Met381-Ile530	
	RPLP1	PP-7605	RPLP1	<i>Escherichia coli</i>	Met1-Asp114	
	RPLP1	PP-7604	RPLP1	<i>Escherichia coli</i>	Tyr11-Phe110	
	RPLP2	PP-3927	RPLP2	<i>Escherichia coli</i>	Met1-Asp115	
	Scl-70	PQ-4647	TOP1	Baculovirus infected Sf9	Met1-Phe765	
	Scl-70	PQ-4645	TOP1	Baculovirus infected Sf9	Gln201-Asp760	
	Scl-70	PP-4377	TOP1	<i>Escherichia coli</i>	Glu221-Ile420	
	SmD2	PP-7664	SNRPD2	<i>Escherichia coli</i>	Met11-Val90	
	SmD3	PP-339	SNRPD3	<i>Escherichia coli</i>	His11-Ala100	
	SmD3	PP-341	SNRPD3	<i>Escherichia coli</i>	His11-Ala100	
	SmD3	PP-337	SNRPD3	<i>Escherichia coli</i>	Arg51-Asn120	
	SS-B/La	PP-3929	SSB	<i>Escherichia coli</i>	Met1-Gln408	
	U1-70K	PP-553	SNRNP70	<i>Escherichia coli</i>	Ala11-Arg180	
	U1-A	PP-26767	SNRPA	<i>Escherichia coli</i>	Ala2-Lys282	
	U1-A	PP-131	SNRPA	<i>Escherichia coli</i>	Arg111-Leu190	
	U1-C	PP-26773	SNRPC	<i>Escherichia coli</i>	Met1-Arg159	
	U1-C	PP-10335	SNRPC	<i>Escherichia coli</i>	Lys31-Pro100	
	α-Fodrin	PP-24924	SPTAN1	<i>Escherichia coli</i>	Thr11-Asn590	
	α-Fodrin	PP-5039	SPTAN1	<i>Escherichia coli</i>	Thr11-Lys250	
	Antiphospholipid Syndrome (APS)	F2	PP-1104	F2	<i>Escherichia coli</i>	Val51-Glu180
	Rheumatoid Arthritis (RA)	C1QA	PP-071	C1QA	<i>Escherichia coli</i>	Glu23-Ala245
C1QC		PP-1595	C1QC	<i>Escherichia coli</i>	Gly31-Glu110	
CENPB		PP-12357	CENPB	<i>Escherichia coli</i>	Val61-Ser510	
CENPB		PQ-014	CENPB	HEK293	Leu501-Ala590	
CENPB		PQ-410	CENPB	HEK293	Leu501-Ala590	
CRP		PQ-4032	CRP	HEK293	Gln19-Pro224	
Ku70		PP-10884	XRCC6	<i>Escherichia coli</i>	Glu11-Lys260	
Ku70		*PP-11930	XRCC6	<i>Escherichia coli</i>	Glu11-Glu240	
Ku80		PP-170	XRCC5	<i>Escherichia coli</i>	Gln571-Asp730	
MMP3		PP-1649	MMP3	<i>Escherichia coli</i>	Leu251-Phe430	
RA33		*PP-224	HNRNPA2B1	<i>Escherichia coli</i>	Glu11-Asn320	
Ro52		PP-211	TRIM21	<i>Escherichia coli</i>	Gln81-Lys260	

Disease	Product	Catalog No.	Gene Name	Expression system	Expression Range
Rheumatoid Arthritis (RA)	Ro60	PP-150	RO60	<i>Escherichia coli</i>	Met381-Ile530
	Ro60	PQ-020	RO60	HEK293	Met381-Ile530
Membranous Nephropathy (MN)	THSD7A	PP-432	THSD7A	<i>Escherichia coli</i>	Pro1511-Gly1590
Systemic Autoimmune Rheumatic Diseases (SARD)	DFS70	PP-550	PSIP1	<i>Escherichia coli</i>	Ile11-Pro490
Celiac Disease	tTG	PP-221	TGM2	<i>Escherichia coli</i>	Pro361-Ser450
Paraneoplastic Neurological Syndrome (PNS)	Amphiphysin	*PP-11929	AMPH	<i>Escherichia coli</i>	Lys11-Gly370
	Amphiphysin	PP-10545	AMPH	<i>Escherichia coli</i>	Glu341-Phe690
	CV2	PQ-868	BMPER	HEK293	Ser41-Gln280
	Hu	PP-078	ANXA1	<i>Escherichia coli</i>	Met1-Asn346
	Hu	PP-11932	ANXA1	<i>Escherichia coli</i>	Gly131-Tyr230
	Hu1	PP-3967	ELAVL1	<i>Escherichia coli</i>	Met1-Lys326
	Hu2	PP-11306	ELAVL2	<i>Escherichia coli</i>	Met1-Ala359
	Hu2	PP-411	ELAVL2	<i>Escherichia coli</i>	Cys11-Asp240
	Hu3	PP-4136	ELAVL3	<i>Escherichia coli</i>	Met1-Ala367
	Hu4	PQ-281	ELAVL4	HEK293	Met1-Ser385
	Hu4	PQ-842	ELAVL4	HEK293	Ser11-Asn380
	Hu4	PP-6317	ELAVL4	<i>Escherichia coli</i>	Ser11-Ile210
	Ma1	PP-12462	PNMA1	<i>Escherichia coli</i>	Gly171-Ala340
	Ma2/Ta	*PP-4177	PNMA2	<i>Escherichia coli</i>	Met1-Asp364
	Ri	*PP-112	ANXA2	<i>Escherichia coli</i>	Ala111-Val210
	SOX1	*PP-11063	SOX1	<i>Escherichia coli</i>	His11-Tyr120
	Yo	PP-370	CDR2	<i>Escherichia coli</i>	Asp191-Leu450
	Yo	*PP-368	CDR2	<i>Escherichia coli</i>	Glu11-Leu250
Zic4	*PP-10127	ZIC4	<i>Escherichia coli</i>	Leu221-Ala330	
Neuromyelitis optica spectrum disorders (NMOSD)	AQP4	PP-25792	AQP4	<i>Escherichia coli</i>	Arg261-Leu320
Idiopathic Inflammatory Myopathy (IIM)	EJ	PP-288	GARS1	<i>Escherichia coli</i>	Glu61-Arg130
	HMGCR	PP-4354	HMGCR	<i>Escherichia coli</i>	Lys351-Lys460
	Jo-1	PP-26768	HARS1	<i>Escherichia coli</i>	Ala2-Cys509
	Jo-1	PP-166	HARS1	<i>Escherichia coli</i>	Phe231-Phe320
	KS	PP-4654	NARS1	<i>Escherichia coli</i>	Met1-Pro548
	Ku70	PP-10884	XRCC6	<i>Escherichia coli</i>	Glu11-Lys260
	Ku70	*PP-11930	XRCC6	<i>Escherichia coli</i>	Glu11-Glu240
	Ku80	PP-170	XRCC5	<i>Escherichia coli</i>	Gln571-Asp730
	MDA5	*PP-5396	IFIH1	<i>Escherichia coli</i>	Gln531-Arg820
	Mi-2 α	PP-6275	CHD3	<i>Escherichia coli</i>	Ala241-Asp380
	Mi-2 β	*PP-11927	CHD4	<i>Escherichia coli</i>	Glu1291-Gln1550
	NXP2	PP-471	MORC3	<i>Escherichia coli</i>	Met1-Thr939
	NXP2	PP-467	MORC3	<i>Escherichia coli</i>	Phe361-Val930
	NXP2	PP-469	MORC3	<i>Escherichia coli</i>	Gln641-Val930
	OJ	PP-5782	IARS1	<i>Escherichia coli</i>	Ile871-Ala1260
	OJ	PP-497	KARS1	<i>Escherichia coli</i>	Val11-Gly130
	PL-12	PP-4888	AARS1	<i>Escherichia coli</i>	Arg11-Leu450
	PL-7	PP-4811	TARS1	<i>Escherichia coli</i>	Glu331-Glu720
	PM-Scl-100	PP-26791	EXOSC10	<i>Escherichia coli</i>	Tyr491-Tyr880
	PM-Scl-100	*PP-366	EXOSC10	<i>Escherichia coli</i>	Pro691-Lys850
	PM-Scl-75	*PP-7672	EXOSC9	<i>Escherichia coli</i>	Arg111-Lys430
	PM-Scl-75	PP-7673	EXOSC9	<i>Escherichia coli</i>	Arg111-Lys430
Ro52	PP-211	TRIM21	<i>Escherichia coli</i>	Gln81-Lys260	
Ro60	PP-150	RO60	<i>Escherichia coli</i>	Met381-Ile530	

Disease	Product	Catalog No.	Gene Name	Expression system	Expression Range	
Idiopathic Inflammatory Myopathy (IIM)	Ro60	PQ-020	RO60	HEK293	Met381-Ile530	
	SAE1	PP-2879	SAE1	<i>Escherichia coli</i>	Glu171-Asp290	
	SRP54	PP-329	SRP54	<i>Escherichia coli</i>	Thr11-Met430	
	SRP54	PP-11934	SRP54	<i>Escherichia coli</i>	Asn181-Leu250	
	SRP68	PP-9304	SRP68	<i>Escherichia coli</i>	Gly11-Gly580	
	SRP68	PP-9306	SRP68	<i>Escherichia coli</i>	Gly11-Gly580	
	SRP68	PP-9303	SRP68	<i>Escherichia coli</i>	Gly11-Arg150	
	SRP68	PP-9302	SRP68	<i>Escherichia coli</i>	Gly21-Asp130	
	SRP68	PP-9305	SRP68	<i>Escherichia coli</i>	Gly21-Asp120	
	SRP72	PP-6493	SRP72	<i>Escherichia coli</i>	Asn41-Gly240	
	TIF1-γ	PP-11926	TRIM33	<i>Escherichia coli</i>	Tyr941-Asp1120	
Systemic Lupus Erythematosus (SLE)	C1QA	PP-071	C1QA	<i>Escherichia coli</i>	Glu23-Ala245	
	C1QC	PP-1595	C1QC	<i>Escherichia coli</i>	Gly31-Glu110	
	CENPB	PP-12357	CENPB	<i>Escherichia coli</i>	Val61-Ser510	
	CENPB	PQ-014	CENPB	HEK293	Leu501-Ala590	
	CENPB	PQ-410	CENPB	HEK293	Leu501-Ala590	
	Ku70	PP-10884	XRCC6	<i>Escherichia coli</i>	Glu11-Lys260	
	Ku70	*PP-11930	XRCC6	<i>Escherichia coli</i>	Glu11-Glu240	
	Ku80	PP-170	XRCC5	<i>Escherichia coli</i>	Gln571-Asp730	
	NCL	PP-11476	NCL	<i>Escherichia coli</i>	Asp391-Thr480	
	P0	*PP-092	RPLP0	<i>Escherichia coli</i>	Ser11-Asp310	
	PCNA	PP-4381	PCNA	<i>Escherichia coli</i>	Met1-Ser261	
	RA33	*PP-224	HNRNPA2B1	<i>Escherichia coli</i>	Glu11-Asn320	
	Ro52	PP-211	TRIM21	<i>Escherichia coli</i>	Gln81-Lys260	
	Ro60	PP-150	RO60	<i>Escherichia coli</i>	Met381-Ile530	
	Ro60	PQ-020	RO60	HEK293	Met381-Ile530	
	RPLP1	PP-7605	RPLP1	<i>Escherichia coli</i>	Met1-Asp114	
	RPLP1	PP-7604	RPLP1	<i>Escherichia coli</i>	Tyr11-Phe110	
	RPLP2	PP-3927	RPLP2	<i>Escherichia coli</i>	Met1-Asp115	
	SmD2	PP-7664	SNRPD2	<i>Escherichia coli</i>	Met11-Val90	
	SmD3	PP-339	SNRPD3	<i>Escherichia coli</i>	His11-Ala100	
	SmD3	PP-341	SNRPD3	<i>Escherichia coli</i>	His11-Ala100	
	SmD3	PP-337	SNRPD3	<i>Escherichia coli</i>	Arg51-Asn120	
	SS-B/La	PP-3929	SSB	<i>Escherichia coli</i>	Met1-Gln408	
	U1-70K	PP-553	SNRNP70	<i>Escherichia coli</i>	Ala11-Arg180	
	U1-A	PP-26767	SNRPA	<i>Escherichia coli</i>	Ala2-Lys282	
	U1-A	PP-131	SNRPA	<i>Escherichia coli</i>	Arg111-Leu190	
	U1-C	PP-26773	SNRPC	<i>Escherichia coli</i>	Met1-Arg159	
	U1-C	PP-10335	SNRPC	<i>Escherichia coli</i>	Lys31-Pro100	
	Systemic Sclerosis (SSc)	CENPB	PP-12357	CENPB	<i>Escherichia coli</i>	Val61-Ser510
		CENPB	PQ-014	CENPB	HEK293	Leu501-Ala590
CENPB		PQ-410	CENPB	HEK293	Leu501-Ala590	
Fibrillarin		PP-5932	FBL	<i>Escherichia coli</i>	Gly71-Lys320	
Ku70		PP-10884	XRCC6	<i>Escherichia coli</i>	Glu11-Lys260	
Ku70		*PP-11930	XRCC6	<i>Escherichia coli</i>	Glu11-Glu240	
Ku80		PP-170	XRCC5	<i>Escherichia coli</i>	Gln571-Asp730	
PM-Scl-100		PP-26791	EXOSC10	<i>Escherichia coli</i>	Tyr491-Tyr880	
PM-Scl-100		*PP-366	EXOSC10	<i>Escherichia coli</i>	Pro691-Lys850	
PM-Scl-75		*PP-7672	EXOSC9	<i>Escherichia coli</i>	Arg111-Lys430	
PM-Scl-75		PP-7673	EXOSC9	<i>Escherichia coli</i>	Arg111-Lys430	
Ro52		PP-211	TRIM21	<i>Escherichia coli</i>	Gln81-Lys260	
Ro60		PP-150	RO60	<i>Escherichia coli</i>	Met381-Ile530	
Ro60		PQ-020	RO60	HEK293	Met381-Ile530	
RPP25		PP-11663	RPP25	<i>Escherichia coli</i>	Met1-Ala199	

Disease	Product	Catalog No.	Gene Name	Expression system	Expression Range
Systemic Sclerosis (SSc)	Scl-70	PQ-4647	TOP1	Baculovirus infected Sf9	Met1-Phe765
	Scl-70	PQ-4645	TOP1	Baculovirus infected Sf9	Gln201-Asp760
	Scl-70	PP-4377	TOP1	<i>Escherichia coli</i>	Glu221-Ile420
Primary Biliary Cholangitis (PBC)	BCOADC-E2	PP-7618	DBT	<i>Escherichia coli</i>	Asp71-Asp330
	GP210	PP-552	NUP210	<i>Escherichia coli</i>	Val1031-Gly1150
	OGDC-E2	PP-271	DLST	<i>Escherichia coli</i>	Ala151-Arg220
	p62	PP-7633	NUP62	<i>Escherichia coli</i>	Gly321-Arg510
	PDC-E2	PP-4746	DLAT	<i>Escherichia coli</i>	His91-Pro410
	SP100	PP-4801	SP100	<i>Escherichia coli</i>	Ser171-Thr560
	SP100	PQ-277	SP100	HEK293	Lys601-Ser680
Central Nervous System Demyelinating Diseases	MBP	PQ-3561	MBP	HEK293	Gly161-Pro300
	MBP	PP-070	MBP	<i>Escherichia coli</i>	Gly101-Ser190
	MOG	PP-520	MOG	<i>Escherichia coli</i>	Gln31-Trp150
	MOG	PQ-398	MOG	HEK293	Gln31-Trp150
Myasthenia Gravis (MG)	LRP4	PQ-3602	LRP4	HEK293	Cys71-Cys270
	LRP4	PP-033	LRP4	<i>Escherichia coli</i>	Ile1781-Gln1870
	MuSK	PQ-001	MUSK	HEK293	Thr31-Pro490
	RyR	PP-4243	RYR1	<i>Escherichia coli</i>	Pro1361-Asn1570
	Titin	*PP-5266	TTN	<i>Escherichia coli</i>	Leu31861-Asn32150
	Titin	PP-12741	TTN	<i>Escherichia coli</i>	Gly14261-Asn14540
Autoimmune Hepatitis (AIH)	BCOADC-E2	PP-7618	DBT	<i>Escherichia coli</i>	Asp71-Asp330
	CENPB	PP-12357	CENPB	<i>Escherichia coli</i>	Val61-Ser510
	CENPB	PQ-014	CENPB	HEK293	Leu501-Ala590
	F-Actin	PP-3955	CAPZA1	<i>Escherichia coli</i>	Met1-Ala286
	F-Actin	PP-4876	CAPZA2	<i>Escherichia coli</i>	Glu11-Trp120
	GP210	PP-552	NUP210	<i>Escherichia coli</i>	Val1031-Gly1150
	LC-1	PP-5739	FTCD	<i>Escherichia coli</i>	Phe11-Gly330
	LKM-1	PQ-4587	CYP2D6	HEK293	Leu241-Ile360
	OGDC-E2	PP-271	DLST	<i>Escherichia coli</i>	Ala151-Arg220
	PDC-E2	PP-4746	DLAT	<i>Escherichia coli</i>	His91-Pro410
	Ro52	PP-211	TRIM21	<i>Escherichia coli</i>	Gln81-Lys260
	Ro60	PP-150	RO60	<i>Escherichia coli</i>	Met381-Ile530
	Ro60	PQ-020	RO60	HEK293	Met381-Ile530
	SLA/LP	PP-10755	SEPSECS	<i>Escherichia coli</i>	Thr181-Asn360
	SLA/LP	PP-10754	SEPSECS	<i>Escherichia coli</i>	Asp171-Glu340
	SP100	PP-4801	SP100	<i>Escherichia coli</i>	Ser171-Thr560
	SP100	PQ-277	SP100	HEK293	Lys601-Ser680
Autoimmune Thyroid Disease (AITD)	TG	PP-060	TG	<i>Escherichia coli</i>	Val1511-Asp1610
	TSHR	PP-193	TSHR	<i>Escherichia coli</i>	Gln311-Ala380
	TSHR	PQ-473	TSHR	HEK293	Gln311-Ala380
Autoimmune Encephalitis (AE)	GABBR2	PQ-295	GABBR2	HEK293	Pro51-Pro480
	GABBR2	PP-708	GABBR2	<i>Escherichia coli</i>	Gln761-Glu880
	GRIA1	PQ-3573	GRIA1	HEK293	Phe21-Pro390
	GRIA1	PP-290	GRIA1	<i>Escherichia coli</i>	Ala391-Glu480
	GRIA1	PQ-669	GRIA1	HEK293	Ala391-Glu480
	GRIN1	PP-12111	GRIN1	<i>Escherichia coli</i>	His171-Arg260
	GRIN1	PQ-864	GRIN1	HEK293	His171-Arg260
	GRIN2A	PP-402	GRIN2A	<i>Escherichia coli</i>	Gln971-Arg1050
	GRIN2B	PP-424	GRIN2B	<i>Escherichia coli</i>	Leu1251-Asp1380
	GRIN2B	PQ-711	GRIN2B	HEK293	Lys51-Ser140
	GRIN3A	PP-2549	GRIN3A	<i>Escherichia coli</i>	Pro961-Val1070
	GRIN3B	PP-4327	GRIN3B	<i>Escherichia coli</i>	Arg881-Ala950
IGLON5	PQ-752	IGLON5	HEK293	Glu161-Ser300	

Disease	Products	Catalog No.	Gene Name	Expression system	Expression Range
Autoimmune Skin Disease	BP180	PP-430	COL17A1	<i>Escherichia coli</i>	Gly11-Ser230
	BP180	PP-24923	COL17A1	<i>Escherichia coli</i>	Glu491-Gln560
	BP230	PP-380	DST	<i>Escherichia coli</i>	Glu6011-Glu6580
	Dsg1	PP-375	DSG1	<i>Escherichia coli</i>	Thr391-Leu540
	Dsg1	PQ-405	DSG1	HEK293	Thr391-Leu540
Autoimmune Kidney Diseases	C1QA	PP-071	C1QA	<i>Escherichia coli</i>	Glu23-Ala245
	C1QC	PP-1595	C1QC	<i>Escherichia coli</i>	Gly31-Glu110
Autoimmune Peripheral Neuropathy	ST6GALNAC5	PP-1362	ST6GALNAC5	<i>Escherichia coli</i>	Gln41-Gln150
	ST8SIA1	PP-12099	ST8SIA1	<i>Escherichia coli</i>	Leu51-Ser180
	ST8SIA1	PQ-646	ST8SIA1	HEK293	Gly151-Ala270

Flagship Products-Recombinant Humanized Antibodies

Catalog No.	Products	Clone No.	WB	IHC	IP	Indirect ELISA
RN-003	Recombinant FTCD Antibody	K92024_4F3	•	•		•
RC-032	Recombinant SSB Antibody	K70030_11G5				•
RN-001	Recombinant TOP1 Antibody	K94015_6C5	•			•
RC-005	Recombinant TOP1 Antibody	K94015_11B11				•
RC-006	Recombinant TOP1 Antibody	K94015_12B1				•
RC-034	Recombinant PCNA Antibody	K29023_5H3				•
RC-001	Recombinant PCNA Antibody	K29023_9D5	•		•	•
RC-002	Recombinant PCNA Antibody	K29023_14A4			•	•
RC-033	Recombinant HARS1 Antibody	K70031_8G6				•
RC-004	Recombinant TRIM21 Antibody	K52008_3F2	•			•
RC-007	Recombinant TRIM21 Antibody	K52008_20A9				•
RC-003	Recombinant TRIM21 Antibody	K52008_20G7	•			•
RC-008	Recombinant TGM2 Antibody	K29035_12F4				•
RN-004	Recombinant CHD4 Antibody	K49015_2C12			•	•
RN-002	Recombinant CHD4 Antibody	K49015_15E2	•			•
RN-042	Recombinant CHD4 Antibody	K49015_2C12				•
RN-14687	Recombinant ELAVL4 Antibody	K24037_10B1	•		•	•
RN-14686	Recombinant ELAVL4 Antibody	K24037_15F12			•	•
RN-14756	Recombinant SEPSECS Antibody	K9N044_1A6				•
RN-14755	Recombinant SEPSECS Antibody	K9N044_9H12				•
RN-14754	Recombinant SEPSECS Antibody	K9N044_28C1				•